

Datasheet for ABIN3021504
anti-Emerin antibody (AA 1-220)



[Go to Product page](#)

4 Images

Overview

Quantity:	100 µL
Target:	Emerin (EMD)
Binding Specificity:	AA 1-220
Reactivity:	Human
Host:	Rabbit
Clonality:	Polyclonal
Conjugate:	This Emerin antibody is un-conjugated
Application:	Western Blotting (WB), Immunofluorescence (IF), Immunohistochemistry (IHC)

Product Details

Immunogen:	Recombinant fusion protein containing a sequence corresponding to amino acids 1-220 of human Emerin/Emerin/EMD (NP_000108.1).
Sequence:	MDNYADLSDT ELTLLRRYN IPHGPVVGST RRLYEKKIFE YETQRRRLSP PSSSAASSYS FSDLNSTRGD ADMYDLPKKE DALLYQSKGY NDDYYEESYF TTRTYGEPES AGPSRAVRQS VTSFPDADAF HHQVHDDLL SSSEEECKDR ERPMYGRDSA YQSITHYRPV SASRSSLDS YYPTSSSTSF MSSSSSSSSW LTRRAIRPEN RAPGAGLGQD
Isotype:	IgG
Cross-Reactivity:	Human, Mouse
Characteristics:	Polyclonal Antibodies
Purification:	Affinity purification

Target Details

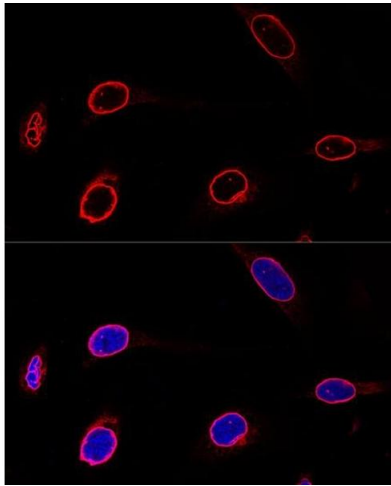
Target:	Emerin (EMD)
Alternative Name:	EMD (EMD Products)
Background:	Emerin is a serine-rich nuclear membrane protein and a member of the nuclear lamina-associated protein family. It mediates membrane anchorage to the cytoskeleton. Dreifuss-Emermy muscular dystrophy is an X-linked inherited degenerative myopathy resulting from mutation in the emerin gene.,EMD,EDMD,LEMD5,STA,emerin,Signal Transduction,Cell Biology & Developmental Biology,Cytoskeleton,Intermediate Filaments,EMD
Molecular Weight:	28 kDa
Gene ID:	2010
UniProt:	P50402

Application Details

Application Notes:	WB,1:500 - 1:2000,IHC,1:50 - 1:200,IF,1:20 - 1:100
Restrictions:	For Research Use only

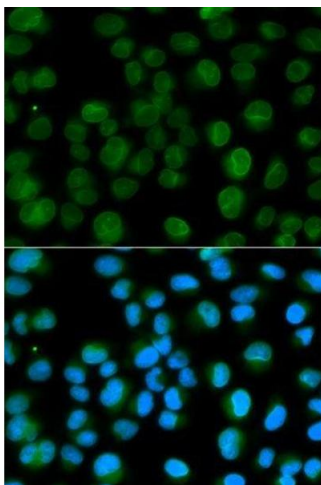
Handling

Format:	Liquid
Buffer:	PBS with 0.02 % sodium azide,50 % glycerol, pH 7.3.
Preservative:	Sodium azide
Precaution of Use:	This product contains Sodium azide: a POISONOUS AND HAZARDOUS SUBSTANCE which should be handled by trained staff only.
Handling Advice:	Avoid freeze / thaw cycles
Storage:	-20 °C
Storage Comment:	Store at -20°C. Avoid freeze / thaw cycles.



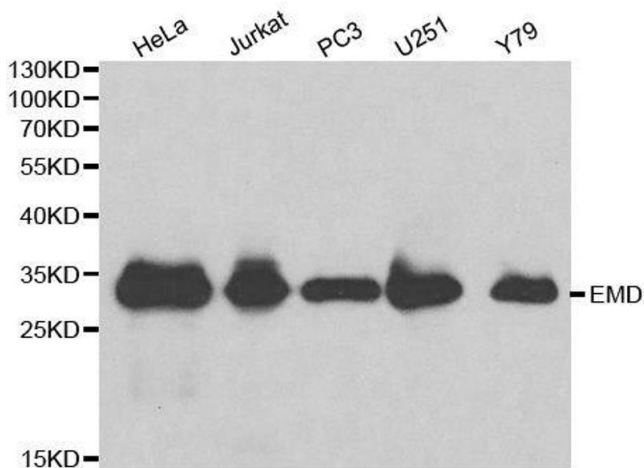
Immunofluorescence

Image 1. Confocal immunofluorescence analysis of U-2 OS cells using Emerin/Emerin/EMD Polyclonal Antibody at dilution of 1:100. Blue: DAPI for nuclear staining.



Immunofluorescence

Image 2. Immunofluorescence analysis of HeLa cells using EMD antibody.



Western Blotting

Image 3. Western blot analysis of extracts of various cell lines, using EMD antibody.

Please check the [product details page](#) for more images. Overall 4 images are available for ABIN3021504.