

Datasheet for ABIN302152

anti-OTUB1 antibody (Internal Region)



[Go to Product page](#)

1 Image

Overview

Quantity:	100 µg
Target:	OTUB1
Binding Specificity:	Internal Region
Reactivity:	Mouse
Host:	Goat
Clonality:	Polyclonal
Conjugate:	This OTUB1 antibody is un-conjugated
Application:	Western Blotting (WB), ELISA

Product Details

Purpose:	OTUB1
Immunogen:	Peptide with sequence C-YKEYAEDDNIYQQK, from the internal region of the protein sequence according to NP_060140.2.
Sequence:	YKEYAEDDNI YQQK
Isotype:	IgG
Cross-Reactivity:	Cow, Human, Mouse, Rat
Purification:	Purified from goat serum by ammonium sulphate precipitation followed by antigen affinity chromatography using the immunizing peptide.
Grade:	Verified

Target Details

Target:	OTUB1
Alternative Name:	OTUB1 (OTUB1 Products)
Background:	OTUB1, OTU domain, ubiquitin aldehyde binding 1, FLJ20113, FLJ40710, HSPC263, MGC111158, MGC4584, OTB1, OTU1, OTU-domain Ubal-binding 1, otubain 1, ubiquitin-specific protease otubain 1
Gene ID:	55611, 107260, 293705
NCBI Accession:	NP_060140

Application Details

Application Notes:	Western Blot: Approx. 30 kDa band observed in Mouse Brain lysates (calculated MW of 31.3 kDa according to Human NP_060140.2 and Mouse NP_598911.1). Recommended concentration: 0.03-0.1 µg/mL. Peptide ELISA: antibody detection limit dilution 1:64000.
Restrictions:	For Research Use only

Handling

Format:	Liquid
Concentration:	0.5 mg/mL
Buffer:	Supplied at 0.5 mg/mL in Tris saline, 0.02 % sodium azide, pH 7.3 with 0.5 % bovine serum albumin.
Preservative:	Sodium azide
Precaution of Use:	This product contains Sodium azide: a POISONOUS AND HAZARDOUS SUBSTANCE which should be handled by trained staff only.
Handling Advice:	Minimize freezing and thawing.
Storage:	-20 °C
Storage Comment:	Aliquot and store at -20°C, with minimal freeze/thawing. A working aliquot may be refrigerated at 4°C for a few weeks and still remain viable.

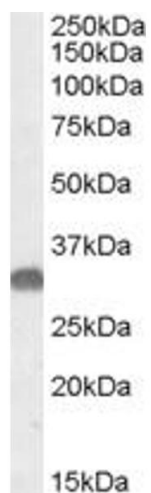


Image 1. ABIN302152 (0.05µg/ml) staining of Mouse Brain lysate (35µg protein in RIPA buffer). Primary incubation was 1 hour. Detected by chemiluminescence.