

Datasheet for ABIN3021521
anti-MCM7 antibody (AA 360-719)

5 Images

[Go to Product page](#)

Overview

Quantity:	100 µL
Target:	MCM7
Binding Specificity:	AA 360-719
Reactivity:	Human
Host:	Rabbit
Clonality:	Polyclonal
Application:	Western Blotting (WB), Immunofluorescence (IF), Immunoprecipitation (IP)

Product Details

Immunogen:	Recombinant fusion protein containing a sequence corresponding to amino acids 360-719 of human MCM7 (NP_005907.3).
Sequence:	GGVDQSPRGM KIRGNINICL MGDPGVAKSQ LLSYIDRLAP RSQYTTGRGS SGVGLTAAVL RDSVSGELTL EGGALVLADQ GVCCIDEFDK MAEADRTAIH EVMEQQTISI AKAGILTTLN ARCSILAAAN PAYGRYNPRR SLEQNIQLPA ALLSRFDLLW LIQDRPDRDN DLRLAQHITY VHQHSRQPPS QFEPLDMKLM RRYIAMCREK QPMVPESLAD YITAAYVEMR REAWASKDAT YTSARTLLAI LRLSTALARL RMVDVVEKED VNEAIRLMEM SKDSLLGDKG QTARTQRPAD VIFATVRELV SGGRSVRFSE AEQRCVSRGF TPAQFQAALD EYEELNVWQV NASRTRITFV
Isotype:	IgG
Cross-Reactivity:	Human, Mouse, Rat
Characteristics:	Polyclonal Antibodies

Target Details

Target:	MCM7
Alternative Name:	MCM7 (MCM7 Products)
Background:	<p>The protein encoded by this gene is one of the highly conserved mini-chromosome maintenance proteins (MCM) that are essential for the initiation of eukaryotic genome replication. The hexameric protein complex formed by the MCM proteins is a key component of the pre-replication complex (pre_RC) and may be involved in the formation of replication forks and in the recruitment of other DNA replication related proteins. The MCM complex consisting of this protein and MCM2, 4 and 6 proteins possesses DNA helicase activity, and may act as a DNA unwinding enzyme. Cyclin D1-dependent kinase, CDK4, is found to associate with this protein, and may regulate the binding of this protein with the tumorsuppressor protein RB1/RB. Alternatively spliced transcript variants encoding distinct isoforms have been reported.,MCM7,CDC47,MCM2,P1.1-MCM3,P1CDC47,P85MCM,PNAS146,PPP1R104,Epigenetics & Nuclear Signaling,MCM7</p>
Molecular Weight:	44 kDa/60 kDa/81 kDa
Gene ID:	4176
UniProt:	P33993
Pathways:	DNA Damage Repair , Mitotic G1-G1/S Phases , DNA Replication , Chromatin Binding , Synthesis of DNA

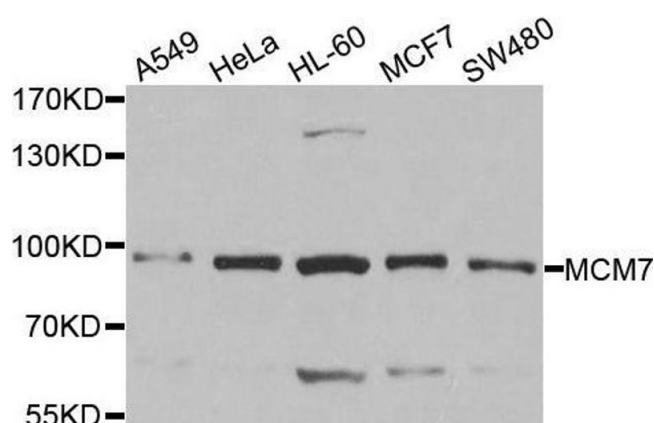
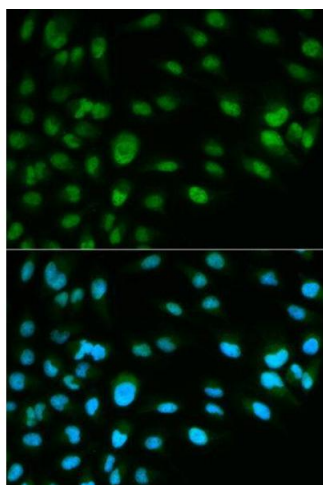
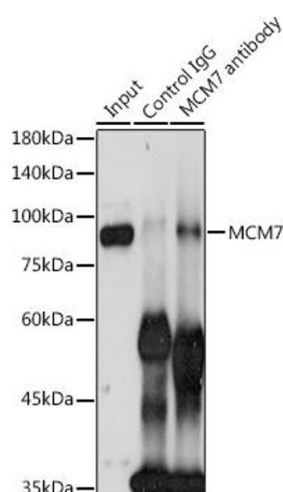
Application Details

Application Notes:	WB,1:500 - 1:2000,IF,1:50 - 1:200,IP,1:50 - 1:200
Restrictions:	For Research Use only

Handling

Format:	Liquid
Buffer:	PBS with 0.02 % sodium azide,50 % glycerol, pH 7.3.
Preservative:	Sodium azide
Precaution of Use:	This product contains Sodium azide: a POISONOUS AND HAZARDOUS SUBSTANCE which should be handled by trained staff only.
Handling Advice:	Avoid freeze / thaw cycles
Storage:	-20 °C

Storage Comment: Store at -20°C. Avoid freeze / thaw cycles.



Immunoprecipitation

Image 1. Immunoprecipitation analysis of 300 µg extracts of HeLa cells using 3 µg MCM7 antibody (ABIN3021520, ABIN3021521, ABIN3021522 and ABIN6215189). Western blot was performed from the immunoprecipitate using MCM7 antibody (ABIN3021520, ABIN3021521, ABIN3021522 and ABIN6215189) at a dilution of 1:500.

Immunofluorescence

Image 2. Immunofluorescence analysis of HeLa cell using MCM7 antibody. Blue: DAPI for nuclear staining.

Western Blotting

Image 3. Western blot analysis of extracts of various cell lines, using MCM7 antibody.

Please check the [product details page](#) for more images. Overall 5 images are available for ABIN3021521.