

Datasheet for ABIN3021533
anti-ALDOA antibody (AA 1-348)

3 Images

[Go to Product page](#)

Overview

Quantity:	100 µL
Target:	ALDOA
Binding Specificity:	AA 1-348
Reactivity:	Human
Host:	Rabbit
Clonality:	Polyclonal
Conjugate:	This ALDOA antibody is un-conjugated
Application:	Western Blotting (WB), Immunofluorescence (IF)

Product Details

Immunogen:	Recombinant fusion protein containing a sequence corresponding to amino acids 1-348 of human ALDOA (NP_908930.1).
Sequence:	MPYQYPALTP EQKKELSDIA HRIVAPGKGI LAADESTGSI AKRLQSIGTE NTEENRRFYR QLLLTADDRV NPCIGGVILF HETLYQKADD GRFPQVIKS KGGVVGKVD KGVVPLAGTN GETTTQGLDG LSERCAQYKK DGADFAKWRC VLKIGEHTPS ALAIMENANV LARYASICQQ NGIVPIVEPE ILPDGDHDLK RCQYVTEKVL AAVYKALSDH HIYLEGTLK PNMVTPGHAC TQKFSHEEIA MATVTALRRT VPPAVTGITF LSGGQSEEEA SINLNAINKC PLLKPWALTF SYGRALQASA LKAWGGKKEN LKAAQEYVK RALANSLACQ GKYPSPGQ
Isotype:	IgG
Cross-Reactivity:	Human, Mouse, Rat
Characteristics:	Polyclonal Antibodies

Product Details

Purification: Affinity purification

Target Details

Target: ALDOA

Alternative Name: ALDOA ([ALDOA Products](#))

Background: The protein encoded by this gene, Aldolase A (fructose-bisphosphate aldolase), is a glycolytic enzyme that catalyzes the reversible conversion of fructose-1,6-bisphosphate to glyceraldehyde 3-phosphate and dihydroxyacetone phosphate. Three aldolase isozymes (A, B, and C), encoded by three different genes, are differentially expressed during development. Aldolase A is found in the developing embryo and is produced in even greater amounts in adult muscle. Aldolase A expression is repressed in adult liver, kidney and intestine and similar to aldolase C levels in brain and other nervous tissue. Aldolase A deficiency has been associated with myopathy and hemolytic anemia. Alternative splicing and alternative promoter usage results in multiple transcript variants. Related pseudogenes have been identified on chromosomes 3 and 10.,ALDOA,ALDA,GSD12,HEL-S-87p,Cancer,Signal Transduction,Cell Biology & Developmental Biology,Cell Cycle,Centrosome,Endocrine & Metabolism,Amino acid metabolism,Carbohydrate metabolism,ALDOA

Molecular Weight: 39 kDa/45 kDa

Gene ID: 226

UniProt: [P04075](#)

Pathways: [Ribonucleoside Biosynthetic Process](#)

Application Details

Application Notes: WB,1:500 - 1:2000,IF,1:20 - 1:100

Restrictions: For Research Use only

Handling

Format: Liquid

Buffer: PBS with 0.02 % sodium azide,50 % glycerol, pH 7.3.

Preservative: Sodium azide

Precaution of Use: This product contains Sodium azide: a POISONOUS AND HAZARDOUS SUBSTANCE which

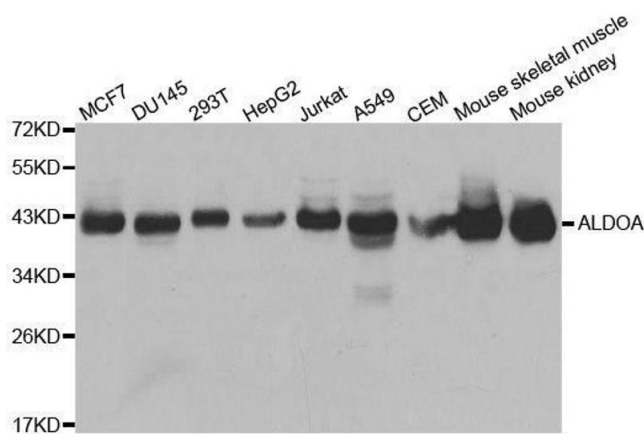
Handling

	should be handled by trained staff only.
Handling Advice:	Avoid freeze / thaw cycles
Storage:	-20 °C
Storage Comment:	Store at -20°C. Avoid freeze / thaw cycles.

Images

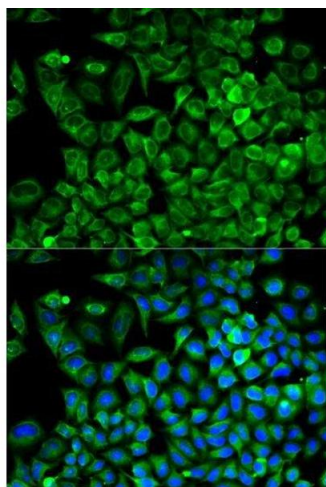
Western Blotting

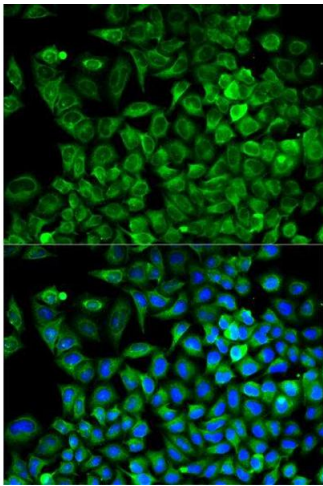
Image 1. Western blot analysis of extracts of various cell lines, using ALDOA antibody.



Immunofluorescence

Image 2. Immunofluorescence analysis of A549 cells using ALDOA antibody.





Immunofluorescence

Image 3. Immunofluorescence analysis of A549 cell using ALDOA antibody. Blue: DAPI for nuclear staining.