



Datasheet for ABIN3021536
anti-SH2D1A antibody (AA 1-128)



[Go to Product page](#)

4 Images

Overview

| | |
|----------------------|--|
| Quantity: | 100 µL |
| Target: | SH2D1A |
| Binding Specificity: | AA 1-128 |
| Reactivity: | Human |
| Host: | Rabbit |
| Clonality: | Polyclonal |
| Conjugate: | This SH2D1A antibody is un-conjugated |
| Application: | Western Blotting (WB), Immunofluorescence (IF) |

Product Details

| | |
|-------------------|--|
| Immunogen: | Recombinant fusion protein containing a sequence corresponding to amino acids 1-128 of human SH2D1A (NP_002342.1). |
| Sequence: | MDAVAVYHGK ISRETGEKLL LATGLDGSYL LRDSESVPGV YCLCVLYHGY IYTYRVSQTE TGSWSAETAP GVHKRYFRKI KNLISAFQKP DQGVIPLQY PVEKKSSARS TQGTGIREG PDVCLKAP |
| Isotype: | IgG |
| Cross-Reactivity: | Human, Mouse |
| Characteristics: | Polyclonal Antibodies |

Target Details

| | |
|---------|--------|
| Target: | SH2D1A |
|---------|--------|

Target Details

Alternative Name: [SH2D1A \(SH2D1A Products\)](#)

Background: This gene encodes a protein that plays a major role in the bidirectional stimulation of T and B cells. This protein contains an SH2 domain and a short tail. It associates with the signaling lymphocyte-activation molecule, thereby acting as an inhibitor of this transmembrane protein by blocking the recruitment of the SH2-domain-containing signal-transduction molecule SHP-2 to its docking site. This protein can also bind to other related surface molecules that are expressed on activated T, B and NK cells, thereby modifying signal transduction pathways in these cells. Mutations in this gene cause lymphoproliferative syndrome X-linked type 1 or Duncan disease, a rare immunodeficiency characterized by extreme susceptibility to infection with Epstein-Barr virus, with symptoms including severe mononucleosis and malignant lymphoma. Multiple transcript variants encoding different isoforms have been found for this gene.,SH2D1A,DSHP,EBVS,IMD5,LYP,MTCP1,SAP,SAP/SH2D1A,XLP,XLPD,XLPD1,Immunology & Inflammation,Cardiovascular,Blood,SH2D1A

Molecular Weight: 6 kDa/8 kDa/13 kDa/14 kDa

Gene ID: 4068

UniProt: [O60880](#)

Pathways: [Regulation of Leukocyte Mediated Immunity](#), [Positive Regulation of Immune Effector Process](#)

Application Details

Application Notes: WB,1:500 - 1:2000,IF,1:50 - 1:200

Restrictions: For Research Use only

Handling

Format: Liquid

Buffer: PBS with 0.02 % sodium azide,50 % glycerol, pH 7.3.

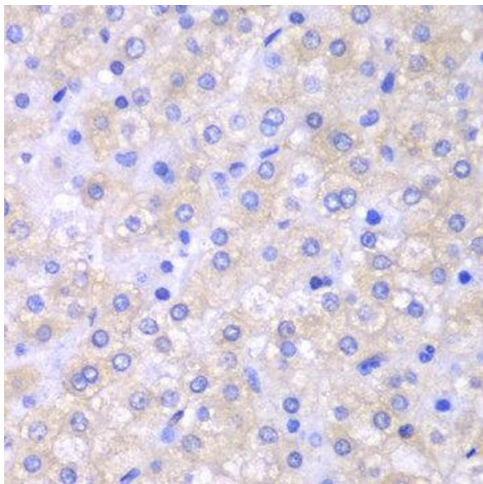
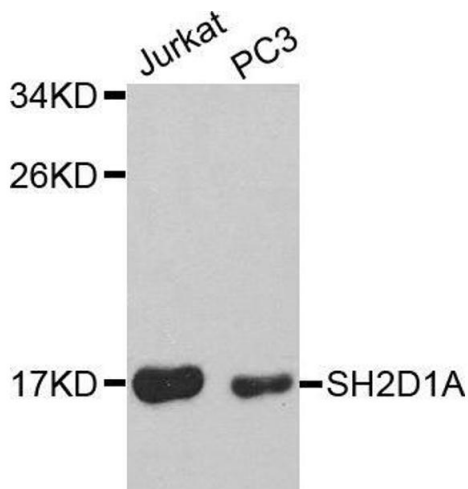
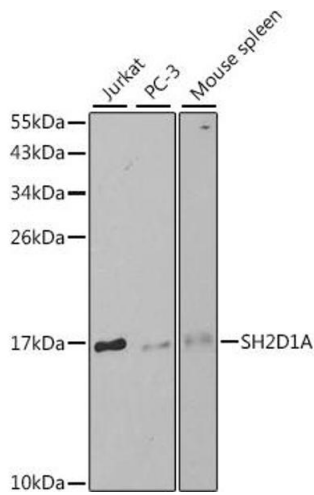
Preservative: Sodium azide

Precaution of Use: This product contains Sodium azide: a POISONOUS AND HAZARDOUS SUBSTANCE which should be handled by trained staff only.

Handling Advice: Avoid freeze / thaw cycles

Storage: -20 °C

Storage Comment: Store at -20°C. Avoid freeze / thaw cycles.



Western Blotting

Image 1. Western blot analysis of extracts of various cell lines, using SH2D1A antibody (ABIN3021535, ABIN3021536, ABIN3021537 and ABIN6215210) at 1:1000 dilution. Secondary antibody: HRP Goat Anti-Rabbit IgG (H+L) (ABIN1684268 and ABIN3020597) at 1:10000 dilution. Lysates/proteins: 25 µg per lane. Blocking buffer: 3 % nonfat dry milk in TBST.

Western Blotting

Image 2. Western blot analysis of extracts of various cell lines, using SH2D1A antibody.

Immunohistochemistry

Image 3.

Please check the [product details page](#) for more images. Overall 4 images are available for ABIN3021536.