

## Datasheet for ABIN3021539 anti-FTH1 antibody (AA 1-183)



[Go to Product page](#)

### 9 Images

#### Overview

Quantity:	100 µL
Target:	FTH1
Binding Specificity:	AA 1-183
Reactivity:	Human
Host:	Rabbit
Clonality:	Polyclonal
Conjugate:	This FTH1 antibody is un-conjugated
Application:	Western Blotting (WB), Immunohistochemistry (IHC), Immunofluorescence (IF)

#### Product Details

Immunogen:	Recombinant fusion protein containing a sequence corresponding to amino acids 1-183 of human Ferritin Heavy Chain (NP_002023.2).
Sequence:	MTTASTSQVR QNYHQDSEAA INRQINLELY ASYVYLSMSY YFDRDDVALK NFAKYFLHQS HEEREHAEKL MKLQNRGGR IFLQDIKKPD CDDWESGLNA MECALHLEKN VNQSLLLELHK LATDKNDPHL CDFIETHYLN EQVKAIKELG DHVTNLRKMG APESGLAEYL FDKHTLGDS NES
Isotype:	IgG
Cross-Reactivity:	Human, Mouse, Rat
Characteristics:	Polyclonal Antibodies
Purification:	Affinity purification

## Target Details

Target:	FTH1
Alternative Name:	FTH1 ( <a href="#">FTH1 Products</a> )
Background:	<p>This gene encodes the heavy subunit of ferritin, the major intracellular iron storage protein in prokaryotes and eukaryotes. It is composed of 24 subunits of the heavy and light ferritin chains. Variation in ferritin subunit composition may affect the rates of iron uptake and release in different tissues. A major function of ferritin is the storage of iron in a soluble and nontoxic state. Defects in ferritin proteins are associated with several neurodegenerative diseases. This gene has multiple pseudogenes. Several alternatively spliced transcript variants have been observed, but their biological validity has not been determined.,FHC,FTH,FTHL6,HFE5,PIG15,PLIF,Ferritin,FTH1,Cancer,Signal Transduction,Endocrine &amp; Metabolism,Mitochondrial metabolism,Mitochondrial markers,Neuroscience,Neurodegenerative Diseases,Amyloid Plaque and Neurofibrillary Tangle Formation in Alzheimer's Disease,Cardiovascular,Blood,Serum Proteins,FTH1</p>
Molecular Weight:	21 kDa
Gene ID:	2495
UniProt:	<a href="#">P02794</a>
Pathways:	<a href="#">Transition Metal Ion Homeostasis</a>

## Application Details

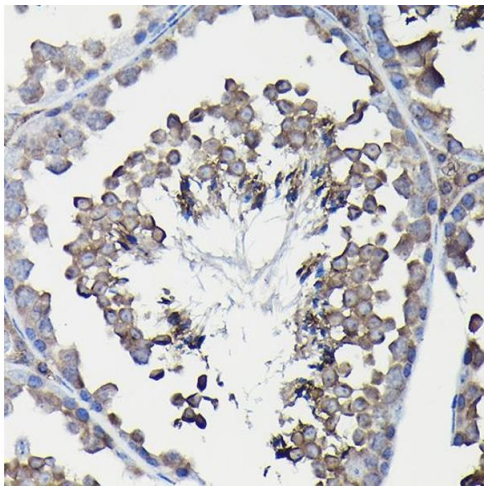
Application Notes:	WB,1:500 - 1:2000,IHC,1:50 - 1:200,IF,1:50 - 1:200
Restrictions:	For Research Use only

## Handling

Format:	Liquid
Buffer:	PBS with 0.02 % sodium azide,50 % glycerol, pH 7.3.
Preservative:	Sodium azide
Precaution of Use:	This product contains Sodium azide: a POISONOUS AND HAZARDOUS SUBSTANCE which should be handled by trained staff only.
Handling Advice:	Avoid freeze / thaw cycles
Storage:	-20 °C

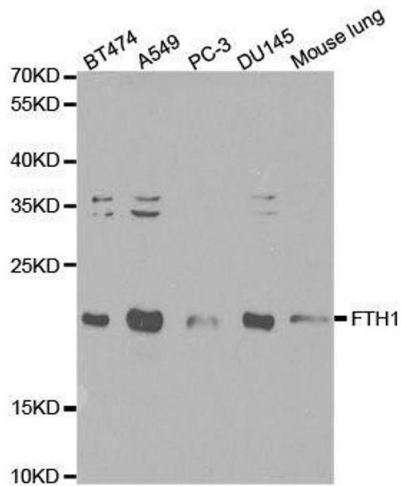
Storage Comment: Store at -20°C. Avoid freeze / thaw cycles.

Images



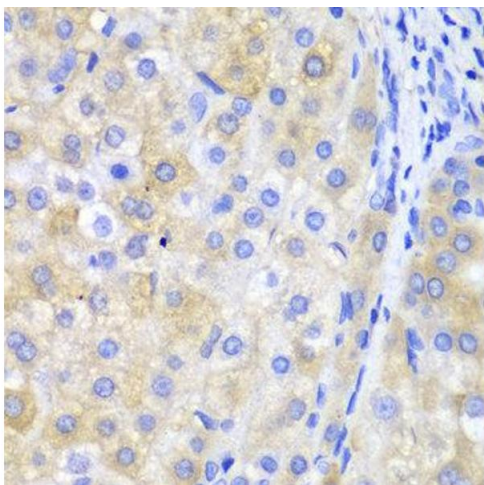
Immunohistochemistry

**Image 1.** Immunohistochemistry of paraffin-embedded mouse liver using Ferritin Heavy Chain Rabbit pAb (ABIN3021538, ABIN3021539, ABIN3021540 and ABIN6215218) at dilution of 1:100 (40x lens). Perform high pressure antigen retrieval with 10 mM citrate buffer pH 6.0 before commencing with IHC staining protocol.



Western Blotting

**Image 2.** Western blot analysis of extracts of various cell lines, using FTH1 antibody.



Immunohistochemistry

**Image 3.**

Please check the [product details page](#) for more images. Overall 9 images are available for ABIN3021539.