



[Go to Product page](#)

Datasheet for ABIN3021569  
**anti-RAB7A antibody (C-Term)**

1 Image

Overview

|                      |   |
|----------------------|---|
| Quantity:            | 100 µL  |
| Target:              | RAB7A   |
| Binding Specificity: | C-Term  |
| Reactivity:          | Human   |
| Host:                | Rabbit  |
| Clonality:           | Polyclonal  |
| Conjugate:           | This RAB7A antibody is un-conjugated              |
| Application:         | Western Blotting (WB), Immunohistochemistry (IHC) |

Product Details

|                   |   |
|-------------------|---|
| Immunogen:        | A synthetic peptide corresponding to a sequence within amino acids 100 to the C-terminus of human RAB7 (NP_004628.4).     |
| Sequence:         | DSWRDEFLIQ ASPRDPENFP FVVLGNKIDL ENRQVATKRA QAWCYSKNNI PYFETSAKEA<br>INVEQAFQTI ARNALKQETE VELYNEFPEP IKLDKNDRAK ASAESCSC |
| Isotype:          | IgG   |
| Cross-Reactivity: | Human, Mouse, Rat   |
| Characteristics:  | Polyclonal Antibodies   |

Target Details

|         |       |
|---------|-------|
| Target: | RAB7A |
|---------|-------|

## Target Details

---

|                   |   |
|-------------------|---|
| Alternative Name: | RAB7A ( <a href="#">RAB7A Products</a> )  |
| Background:       | RAB family members are small, RAS-related GTP-binding proteins that are important regulators of vesicular transport. Each RAB protein targets multiple proteins that act in exocytic / endocytic pathways. This gene encodes a RAB family member that regulates vesicle traffic in the late endosomes and also from late endosomes to lysosomes. This encoded protein is also involved in the cellular vacuolation of the VacA cytotoxin of Helicobacter pylori. Mutations at highly conserved amino acid residues in this gene have caused some forms of Charcot-Marie-Tooth (CMT) type 2 neuropathies.,RAB7A,PRO2706,RAB7,Signal Transduction,G protein signaling,Signal Transduction,RAB7A |
| Molecular Weight: | 23 kDa  |
| Gene ID:          | 7879  |
| UniProt:          | <a href="#">P51149</a>  |
| Pathways:         | <a href="#">EGFR Signaling Pathway</a> , <a href="#">Maintenance of Protein Location</a> , <a href="#">SARS-CoV-2 Protein Interactome</a>   |

## Application Details

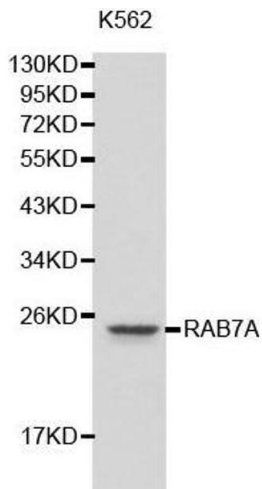
---

|                    |                                    |
|--------------------|------------------------------------|
| Application Notes: | WB,1:500 - 1:2000,IHC,1:10 - 1:100 |
| Restrictions:      | For Research Use only              |

## Handling

---

|                    |  |
|--------------------|--|
| Format:            | Liquid   |
| Buffer:            | PBS with 0.02 % sodium azide,50 % glycerol, pH 7.3.  |
| Preservative:      | Sodium azide   |
| Precaution of Use: | This product contains Sodium azide: a POISONOUS AND HAZARDOUS SUBSTANCE which should be handled by trained staff only. |
| Handling Advice:   | Avoid freeze / thaw cycles   |
| Storage:           | -20 °C   |
| Storage Comment:   | Store at -20°C. Avoid freeze / thaw cycles.  |



### Western Blotting

**Image 1.** Western blot analysis of K562 cell lysate using RAB7A antibody.