



[Go to Product page](#)

Datasheet for ABIN302157

anti-USP43 antibody (Internal Region)

1 Image

Overview

Quantity:	100 µg
Target:	USP43
Binding Specificity:	Internal Region
Reactivity:	Human
Host:	Goat
Clonality:	Polyclonal
Conjugate:	This USP43 antibody is un-conjugated
Application:	ELISA, Immunohistochemistry (IHC)

Product Details

Purpose:	USP43
Immunogen:	Peptide with sequence C-SQRTVPGEQASYGT, from the internal region of the protein sequence according to NP_694942.3.
Sequence:	SQRTVPGEQA SYGT
Isotype:	IgG
Cross-Reactivity:	Human
Purification:	Purified from goat serum by ammonium sulphate precipitation followed by antigen affinity chromatography using the immunizing peptide.
Grade:	Verified

Target Details

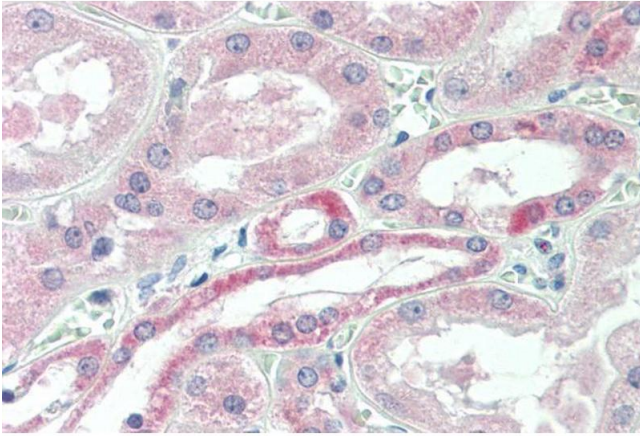
Target:	USP43
Alternative Name:	USP43 (USP43 Products)
Background:	USP43, ubiquitin specific peptidase 43, FLJ30626, ubiquitin specific protease 43
Gene ID:	124739
NCBI Accession:	NP_694942

Application Details

Application Notes:	Immunohistochemistry: Paraffin embedded Human Kidney. Recommended concentration: 5-10 µg/mL. Western Blot: Preliminary experiments gave an approx 170 kDa band in Human Testis lysates after 0.2 µg/mL antibody staining. Please note that currently we cannot find an explanation in the literature for the band we observe given the calculated size of 123 Peptide ELISA: antibody detection limit dilution 1:16000.
Restrictions:	For Research Use only

Handling

Format:	Liquid
Concentration:	0.5 mg/mL
Buffer:	Supplied at 0.5 mg/mL in Tris saline, 0.02 % sodium azide, pH 7.3 with 0.5 % bovine serum albumin.
Preservative:	Sodium azide
Precaution of Use:	This product contains Sodium azide: a POISONOUS AND HAZARDOUS SUBSTANCE which should be handled by trained staff only.
Handling Advice:	Minimize freezing and thawing.
Storage:	-20 °C
Storage Comment:	Aliquot and store at -20°C, with minimal freeze/thawing. A working aliquot may be refrigerated at 4°C for a few weeks and still remain viable.



Immunohistochemistry

Image 1. ABIN302157 (5µg/ml) staining of paraffin embedded Human Kidney. Steamed antigen retrieval with citrate buffer pH 6, AP-staining.