



[Go to Product page](#)

Datasheet for ABIN3021575

anti-LSD1 antibody (AA 130-380)

7 Images

1 Publication

Overview

Quantity:	100 µL
Target:	LSD1 (KDM1A)
Binding Specificity:	AA 130-380
Reactivity:	Human
Host:	Rabbit
Clonality:	Polyclonal
Conjugate:	This LSD1 antibody is un-conjugated
Application:	Western Blotting (WB), Immunoprecipitation (IP)

Product Details

Immunogen:	Recombinant fusion protein containing a sequence corresponding to amino acids 130-380 of human KDM1 (NP_055828.2).
Sequence:	LSEDEYYSEE ERNAKAEKEK KLPPPPQAP PEEENESEPE EPSGVEGAAF QSRLPHDRMT SQEAACFPDI ISGPQQTQKV FLFIRNRTLQ LWLDNPKIQL TFEATLQQL E APYNSDTVLV HRVHSYLERH GLINFGIYKR IKPLPTKKTG KVIIGSGVS GLAAARQLQS FGMDVTLLEA RDRVGGRVAT FRKGNVADL GAMVVTGLGG NPMVAVSKQV NMELAKIKQK CPLYEANGQA VPKEKDEMVE Q
Isotype:	IgG
Cross-Reactivity:	Human, Mouse, Rat
Characteristics:	Polyclonal Antibodies

Target Details

Target:	LSD1 (KDM1A)
Alternative Name:	KDM1A (KDM1A Products)
Background:	This gene encodes a nuclear protein containing a SWIRM domain, a FAD-binding motif, and an amine oxidase domain. This protein is a component of several histone deacetylase complexes, though it silences genes by functioning as a histone demethylase. Alternative splicing results in multiple transcript variants.,KDM1A,AOF2,BHC110,CPRF,KDM1,LSD1,KDM1,Epigenetics & Nuclear Signaling,Chromatin Modifying Enzymes,Demethylation,Transcription Factors,KDM1A
Molecular Weight:	92 kDa/95 kDa
Gene ID:	23028
UniProt:	O60341
Pathways:	Regulation of Hormone Metabolic Process , Regulation of Hormone Biosynthetic Process , Negative Regulation of intrinsic apoptotic Signaling , Warburg Effect

Application Details

Application Notes:	WB,1:500 - 1:2000,IP,1:50 - 1:100
Restrictions:	For Research Use only

Handling

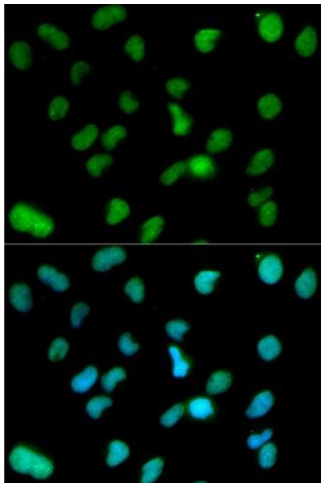
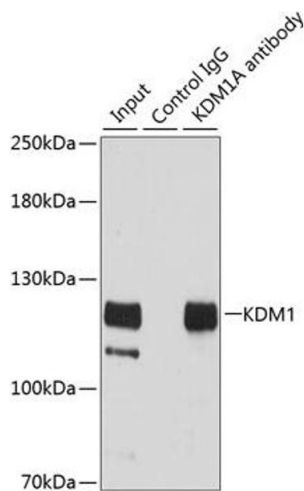
Format:	Liquid
Buffer:	PBS with 0.02 % sodium azide,50 % glycerol, pH 7.3.
Preservative:	Sodium azide
Precaution of Use:	This product contains Sodium azide: a POISONOUS AND HAZARDOUS SUBSTANCE which should be handled by trained staff only.
Handling Advice:	Avoid freeze / thaw cycles
Storage:	-20 °C
Storage Comment:	Store at -20°C. Avoid freeze / thaw cycles.

Publications

Product cited in:	Chen, Li, Fan, Cao, Yao, Xu: "Selenium antagonizes cadmium-induced apoptosis in chicken spleen but not involving Nrf2-regulated antioxidant response." in: Ecotoxicology and
-------------------	-------------------------------------------------------------------------------------------------------------------------------------------------------------------------------------

environmental safety, Vol. 145, pp. 503-510, (2017) ([PubMed](#)).

Xu, Zhang, Lu, Deng, Zhao, Zhao, Zhao: "Prevention of Hippocampal Neuronal Damage and Cognitive Function Deficits in Vascular Dementia by Dextromethorphan." in: **Molecular neurobiology**, Vol. 53, Issue 5, pp. 3494-502, (2016) ([PubMed](#)).

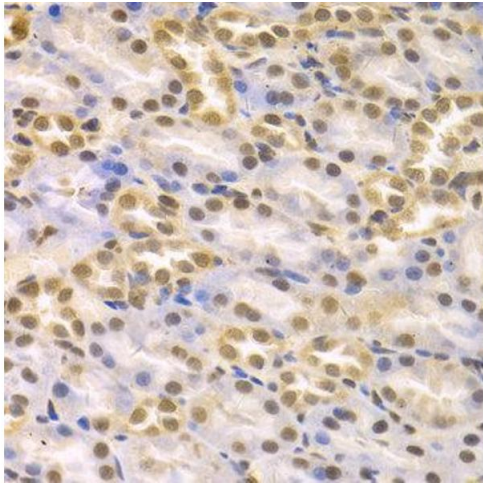


Immunoprecipitation

Image 1. Immunoprecipitation analysis of 200 μ g extracts of HeLa cells using 3 μ g KDM1 antibody (ABIN3021574, ABIN3021575, ABIN3021576, ABIN1513123 and ABIN1514268). Western blot was performed from the immunoprecipitate using KDM1 antibody (ABIN3021574, ABIN3021575, ABIN3021576, ABIN1513123 and ABIN1514268) at a dilution of 1:500.

Immunofluorescence

Image 2. Immunofluorescence analysis of HeLa cell using KDM1A antibody. Blue: DAPI for nuclear staining.



Immunohistochemistry

Image 3.

Please check the [product details page](#) for more images. Overall 7 images are available for ABIN3021575.