

Datasheet for ABIN302158
anti-UNC5CL antibody (Internal Region)[Go to Product page](#)

1 Image

Overview

Quantity:	100 µg
Target:	UNC5CL
Binding Specificity:	Internal Region
Reactivity:	Human
Host:	Goat
Clonality:	Polyclonal
Conjugate:	This UNC5CL antibody is un-conjugated
Application:	Western Blotting (WB), ELISA

Product Details

Purpose:	UNC5CL
Sequence:	KHCAEQPSHA RTY
Isotype:	IgG
Cross-Reactivity:	Human
Purification:	Purified from goat serum by ammonium sulphate precipitation followed by antigen affinity chromatography using the immunizing peptide.
Grade:	Verified

Target Details

Target:	UNC5CL
---------	--------

Target Details

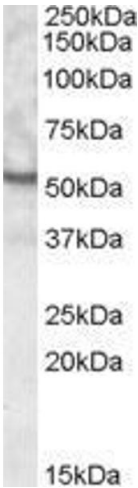
Alternative Name:	UNC5CL (UNC5CL Products)
Background:	UNC5CL, unc-5 homolog C (C. elegans)-like, MGC34763, ZUD, OTTHUMP00000016362, ZU5 and death domain containing, ZU5 and death domain-containing protein, unc-5 homolog C-like
Gene ID:	222643
NCBI Accession:	NP_775832

Application Details

Application Notes:	Western Blot: Approx. 55 kDa band observed in Human Kidney and Ovary lysates (calculated MW of 57.7 kDa according to NP_775832.1). Recommended concentration: 0.3-1 µg/mL. Peptide ELISA: antibody detection limit dilution 1:8000.
Restrictions:	For Research Use only

Handling

Format:	Liquid
Concentration:	0.5 mg/mL
Buffer:	Supplied at 0.5 mg/mL in Tris saline, 0.02 % sodium azide, pH 7.3 with 0.5 % bovine serum albumin.
Preservative:	Sodium azide
Precaution of Use:	This product contains Sodium azide: a POISONOUS AND HAZARDOUS SUBSTANCE which should be handled by trained staff only.
Handling Advice:	Minimize freezing and thawing.
Storage:	-20 °C
Storage Comment:	Aliquot and store at -20°C, with minimal freeze/thawing. A working aliquot may be refrigerated at 4°C for a few weeks and still remain viable.



Western Blotting

Image 1. ABIN302158 0.3µg/ml) staining of Human Kidney lysate (35µg protein in RIPA buffer). Primary incubation was 1 hour. Detected by chemiluminescence.