

Datasheet for ABIN3021605  
**anti-SMPD2 antibody (AA 150-250)**[Go to Product page](#)

## 2 Images

## Overview

Quantity:	100 µL
Target:	SMPD2
Binding Specificity:	AA 150-250
Reactivity:	Human
Host:	Rabbit
Clonality:	Polyclonal
Application:	Western Blotting (WB), Immunohistochemistry (IHC)

## Product Details

Immunogen:	A synthetic peptide corresponding to a sequence within amino acids 150-250 of human SMPD2 (NP_003071.2).
Sequence:	AHRVAQAWEL AQFIHHTSKK ADVVLLCGDL NMHPEDLGCC LLKEWTGLHD AYLETRDFKG SEEGNTMVPK NCYVSQQLK PFPFGVRIDY VLYKAVSGFY I
Isotype:	IgG
Cross-Reactivity:	Human, Mouse, Rat
Characteristics:	Polyclonal Antibodies

## Target Details

Target:	SMPD2
Alternative Name:	SMPD2 ( <a href="#">SMPD2 Products</a> )

## Target Details

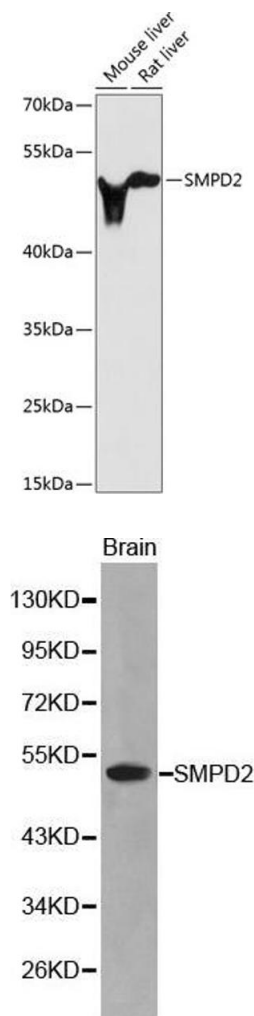
Background:	This gene encodes a protein which was initially identified as a sphingomyelinase based on sequence similarity between bacterial sphingomyelinases and a yeast protein. Subsequent studies showed that its biological function is less likely to be as a sphingomyelinase and instead as a lysophospholipase.,SMPD2,ISC1,NSMASE,NSMASE1,Neuroscience,Cell Type Marker,Neurodegenerative Diseases,Amyloid Plaque and Neurofibrillary Tangle Formation in Alzheimer's Disease,Oligodendrocyte marker,SMPD2
Molecular Weight:	47 kDa
Gene ID:	6610
UniProt:	<a href="#">O60906</a>
Pathways:	<a href="#">Neurotrophin Signaling Pathway</a>

## Application Details

Application Notes:	WB,1:500 - 1:2000,IHC,1:100 - 1:200
Restrictions:	For Research Use only

## Handling

Format:	Liquid
Buffer:	PBS with 0.02 % sodium azide,50 % glycerol, pH 7.3.
Preservative:	Sodium azide
Precaution of Use:	This product contains Sodium azide: a POISONOUS AND HAZARDOUS SUBSTANCE which should be handled by trained staff only.
Handling Advice:	Avoid freeze / thaw cycles
Storage:	-20 °C
Storage Comment:	Store at -20°C. Avoid freeze / thaw cycles.



### Western Blotting

**Image 1.** Western blot analysis of extracts of various cell lines, using SMPD2 antibody (ABIN3021604, ABIN3021605, ABIN3021606 and ABIN6215351) at 1:3000 dilution. Secondary antibody: HRP Goat Anti-Rabbit IgG (H+L) (ABIN1684268 and ABIN3020597) at 1:10000 dilution. Lysates/proteins: 25 µg per lane. Blocking buffer: 3 % nonfat dry milk in TBST. Detection: ECL Basic Kit (RM00020). Exposure time: 90s.

### Western Blotting

**Image 2.**