



[Go to Product page](#)

Datasheet for ABIN3021626
anti-CDC25A antibody (AA 235-484)

6 Images

Overview

Quantity:	100 µL
Target:	CDC25A
Binding Specificity:	AA 235-484
Reactivity:	Human
Host:	Rabbit
Clonality:	Polyclonal
Conjugate:	This CDC25A antibody is un-conjugated
Application:	Western Blotting (WB), Immunohistochemistry (IHC), Immunofluorescence (IF)

Product Details

Immunogen:	Recombinant fusion protein containing a sequence corresponding to amino acids 235-484 of human CDC25A (NP_963861.1).
Sequence:	RPERSQEESP PGSTKRRKSM SGASPKESTN PEKAHETLHQ SLSLASSPKG TIENILDNDP RDLIGDFSKG YLFHTVAGKH QDLKYISPEI MASVLNGKFA NLIKEFVIID CRYPYEYEGG HIKGA VNLHM EEEVEDFLK KPIVPTDGKR VIVVFHCEFS SERGPRMCRY VRERDRLGNE YPKLHPELY VLKGGYKEFF MKCQSYCEPP SYRPMHHEDF KEDLKKFRTK SRTWAGEKSK REMYSRLKKL
Isotype:	IgG
Cross-Reactivity:	Human, Mouse, Rat
Characteristics:	Polyclonal Antibodies
Purification:	Affinity purification

Target Details

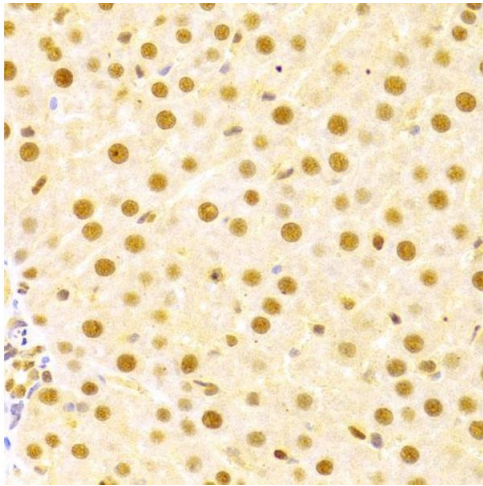
Target:	CDC25A
Alternative Name:	CDC25A (CDC25A Products)
Background:	<p>CDC25A is a member of the CDC25 family of phosphatases. CDC25A is required for progression from G1 to the S phase of the cell cycle. It activates the cyclin-dependent kinase CDC2 by removing two phosphate groups. CDC25A is specifically degraded in response to DNA damage, which prevents cells with chromosomal abnormalities from progressing through cell division. CDC25A is an oncogene, although its exact role in oncogenesis has not been demonstrated. Two transcript variants encoding different isoforms have been found for this gene.,CDC25A,CDC25A2,Epigenetics & Nuclear Signaling,Cancer,Signal Transduction,Kinase,Cell Biology & Developmental Biology,Cell Cycle,G1/S Checkpoint,G2/M DNA Damage Checkpoint,CDC25A</p>
Molecular Weight:	54 kDa/59 kDa
Gene ID:	993
UniProt:	P30304
Pathways:	Cell Division Cycle , Mitotic G1-G1/S Phases , M Phase

Application Details

Application Notes:	WB,1:500 - 1:2000,IHC,1:50 - 1:200,IF,1:50 - 1:200
Restrictions:	For Research Use only

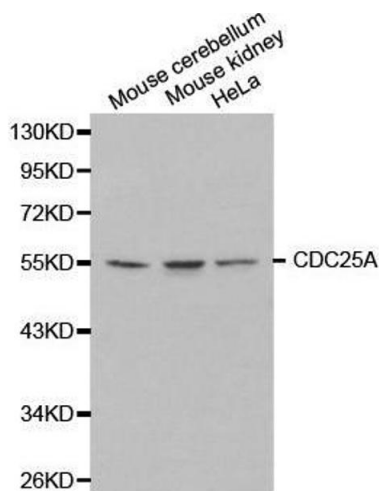
Handling

Format:	Liquid
Buffer:	PBS with 0.02 % sodium azide,50 % glycerol, pH 7.3.
Preservative:	Sodium azide
Precaution of Use:	This product contains Sodium azide: a POISONOUS AND HAZARDOUS SUBSTANCE which should be handled by trained staff only.
Handling Advice:	Avoid freeze / thaw cycles
Storage:	-20 °C
Storage Comment:	Store at -20°C. Avoid freeze / thaw cycles.



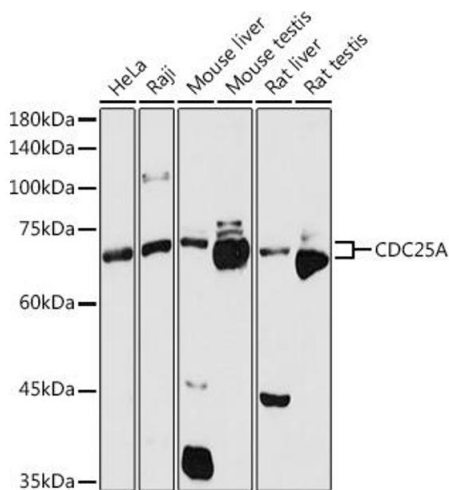
Immunohistochemistry

Image 1. Immunohistochemistry of paraffin-embedded human liver damage using CDC25A antibody (ABIN3021625, ABIN3021626, ABIN3021627 and ABIN6215426) at dilution of 1:100 (40x lens). Perform microwave antigen retrieval with 10 mM PBS buffer pH 7.2 before commencing with IHC staining protocol.



Western Blotting

Image 2. Western blot analysis of extracts of various cell lines, using CDC25A antibody.



Western Blotting

Image 3. Western blot analysis of extracts of various cell lines, using CDC25A antibody (ABIN3021625, ABIN3021626, ABIN3021627 and ABIN6215426) at 1:1000 dilution. Secondary antibody: HRP Goat Anti-Rabbit IgG (H+L) (ABIN1684268 and ABIN3020597) at 1:10000 dilution. Lysates/proteins: 25 µg per lane. Blocking buffer: 3 % nonfat dry milk in TBST. Detection: ECL Basic Kit (RM00020). Exposure time: 60s.

Please check the [product details page](#) for more images. Overall 6 images are available for ABIN3021626.