

Datasheet for ABIN302164

**anti-ABCC11 antibody (Internal Region)**

5 Images

[Go to Product page](#)

## Overview

Quantity:	100 µg
Target:	ABCC11
Binding Specificity:	Internal Region
Reactivity:	Human
Host:	Goat
Clonality:	Polyclonal
Conjugate:	This ABCC11 antibody is un-conjugated
Application:	Western Blotting (WB), Immunohistochemistry (IHC), ELISA, Immunofluorescence (IF), Flow Cytometry (FACS)

## Product Details

Purpose:	MRP8 / ABCC11
Immunogen:	Peptide with sequence C-KVVEFDRPEVLRK, from the internal region (near C Terminus) of the protein sequence according to NP_115972.2, NP_660187.1.
Sequence:	KVVEFDRPEV LRK
Isotype:	IgG
Cross-Reactivity:	Human
Purification:	Purified from goat serum by ammonium sulphate precipitation followed by antigen affinity chromatography using the immunizing peptide.
Grade:	Verified

## Target Details

Target:	ABCC11
Alternative Name:	ABCC11 ( <a href="#">ABCC11 Products</a> )
Background:	ABCC11, ATP-binding cassette transporter MRP8, ATP-binding cassette, sub-family C (CFTR/MRP), member 11, EWWD, MRP8, WW, ATP-binding cassette protein C11, ATP-binding cassette, sub-family C, member 11, multi-resistance protein 8
Gene ID:	85320
NCBI Accession:	<a href="#">NP_115972</a> , <a href="#">NP_660187</a>

## Application Details

Application Notes:	<p>Immunohistochemistry: Paraffin embedded Human Breast. Recommended concentration: 3.75 µg/mL.</p> <p>Western Blot: Approx 125 kDa band observed in Human Testis lysates and in preliminary testing of Breast lysate (calculated MW of 150 kDa according to NP_660187.1). This molecular weight is routinely observed by other sources. Recommended concentration: 0.</p> <p>Peptide ELISA: antibody detection limit dilution 1:32000.</p>
Comment:	<p><b>Immunofluorescence:</b> Strong expression of the protein seen in the membranes and cytoplasm of HeLa cells. Recommended concentration: 10µg/ml.</p> <p><b>Flow Cytometry:</b> Flow cytometric analysis of HeLa cells. Recommended concentration: 10µg/ml.</p>
Restrictions:	For Research Use only

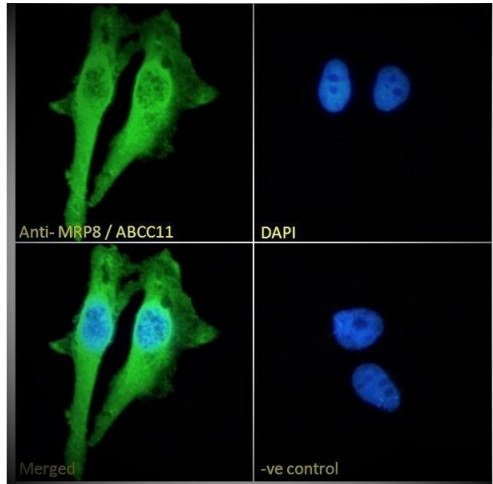
## Handling

Format:	Liquid
Concentration:	0.5 mg/mL
Buffer:	Supplied at 0.5 mg/mL in Tris saline, 0.02 % sodium azide, pH 7.3 with 0.5 % bovine serum albumin.
Preservative:	Sodium azide
Precaution of Use:	This product contains Sodium azide: a POISONOUS AND HAZARDOUS SUBSTANCE which should be handled by trained staff only.
Handling Advice:	Minimize freezing and thawing.
Storage:	-20 °C

## Handling

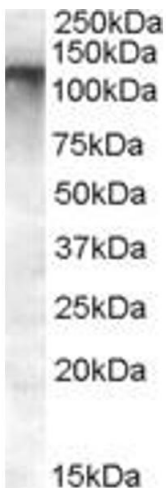
Storage Comment: Aliquot and store at -20°C, with minimal freeze/thawing. A working aliquot may be refrigerated at 4°C for a few weeks and still remain viable.

## Images



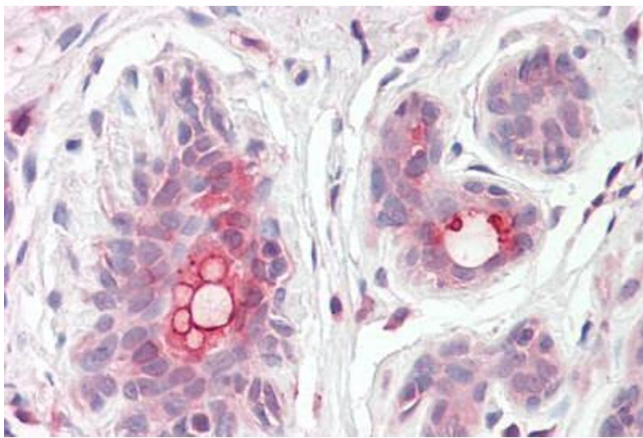
### Immunofluorescence

**Image 1.** (ABIN302164) Immunofluorescence analysis of paraformaldehyde fixed HeLa cells, permeabilized with 0.15 % Triton. Primary incubation 1hr (10 µg/mL) followed by Alexa Fluor 488 secondary antibody (2 µg/mL), showing membrane and cytoplasmic staining. The nuclear sta



### Western Blotting

**Image 2.** ABIN302164 (0.5µg/ml) staining of Human Breast lysate (35µg protein in RIPA buffer). Detected by chemiluminescence.



### Immunohistochemistry

**Image 3.** ABIN302164 (3.75µg/ml) staining of paraffin embedded Human Breast. Steamed antigen retrieval with citrate buffer pH 6, AP-staining.

Please check the [product details page](#) for more images. Overall 5 images are available for ABIN302164.