



[Go to Product page](#)

Datasheet for ABIN3021641
anti-NCF2 antibody (AA 227-526)

4 Images

Overview

Quantity:	100 µL
Target:	NCF2
Binding Specificity:	AA 227-526
Reactivity:	Human
Host:	Rabbit
Clonality:	Polyclonal
Conjugate:	This NCF2 antibody is un-conjugated
Application:	Western Blotting (WB), Immunohistochemistry (IHC)

Product Details

Immunogen:	Recombinant fusion protein containing a sequence corresponding to amino acids 227-526 of human NOXA2/p67phox (NP_000424.2).
Sequence:	PPPRPKTPEI FRALEGEAHR VLFQFVPETK EELQVMPGNI VFVLKKGNDN WATVMFNGQK GLVPCNYLEP VELRIHPQQQ PQEESSPQSD IPAPPSSKAP GRPQLSPGQK QKEEPKEVKL SVPMPYTLKV HYKYTVVMKT QPGLPYSQVR DMVSKKLELR LEHTKLSYRP RDSNELVPLS EDSMKDAWGQ VKNYCLTLWC ENTVDGQGF DEPKESEKAD ANNQTTEPQL KKGVSQVEALF SYEATQPEDL EFQEGDIILV LSKVNEEWLE GECKGKVGIF PKVVEDCAT TDLESTRREV
Isotype:	IgG
Cross-Reactivity:	Human, Mouse
Characteristics:	Polyclonal Antibodies

Target Details

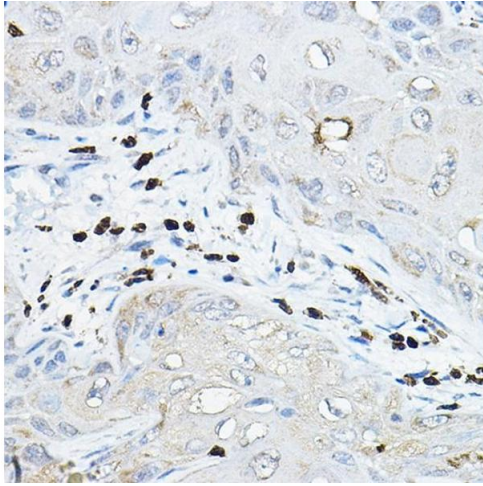
Target:	NCF2
Alternative Name:	NCF2 (NCF2 Products)
Background:	This gene encodes neutrophil cytosolic factor 2, the 67-kilodalton cytosolic subunit of the multi-protein NADPH oxidase complex found in neutrophils. This oxidase produces a burst of superoxide which is delivered to the lumen of the neutrophil phagosome. Mutations in this gene, as well as in other NADPH oxidase subunits, can result in chronic granulomatous disease, a disease that causes recurrent infections by catalase-positive organisms. Alternative splicing results in multiple transcript variants encoding different isoforms.,NCF2,NCF-2,NOXA2,P67-PHOX,P67PHOX,Cancer,Endocrine & Metabolism,Immunology & Inflammation,NCF2
Molecular Weight:	47 kDa/50 kDa/54 kDa/59 kDa
Gene ID:	4688
UniProt:	P19878

Application Details

Application Notes:	WB,1:500 - 1:2000,IHC,1:50 - 1:200
Restrictions:	For Research Use only

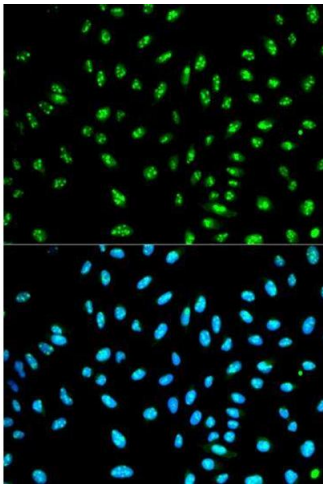
Handling

Format:	Liquid
Buffer:	PBS with 0.02 % sodium azide,50 % glycerol, pH 7.3.
Preservative:	Sodium azide
Precaution of Use:	This product contains Sodium azide: a POISONOUS AND HAZARDOUS SUBSTANCE which should be handled by trained staff only.
Handling Advice:	Avoid freeze / thaw cycles
Storage:	-20 °C
Storage Comment:	Store at -20°C. Avoid freeze / thaw cycles.



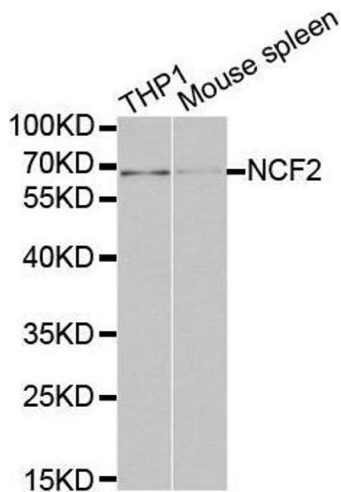
Immunohistochemistry

Image 1. Immunohistochemistry of paraffin-embedded human esophageal cancer using NOX/p67phox Rabbit pAb (ABIN3021640, ABIN3021641, ABIN3021642, ABIN1513243 and ABIN6215468) at dilution of 1:100 (40x lens). Perform microwave antigen retrieval with 10 mM PBS buffer pH 7.2 before commencing with IHC staining protocol.



Immunofluorescence

Image 2. Immunofluorescence analysis of HeLa cell using NCF2 antibody. Blue: DAPI for nuclear staining.



Western Blotting

Image 3.

Please check the [product details page](#) for more images. Overall 4 images are available for ABIN3021641.