



[Go to Product page](#)

Datasheet for ABIN3021644  
**anti-SERPINB5 antibody (AA 21-189)**

2 Images

Overview

Quantity:	100 µL
Target:	SERPINB5
Binding Specificity:	AA 21-189
Reactivity:	Human
Host:	Rabbit
Clonality:	Polyclonal
Conjugate:	This SERPINB5 antibody is un-conjugated
Application:	Western Blotting (WB)

Product Details

Immunogen:	Recombinant fusion protein containing a sequence corresponding to amino acids 21-189 of human SERPINB5 (NP_002630.2).
Sequence:	EKEPLGNVLF SPICLSTSLA LAQVGAKGDT ANEIGQVLHF ENVKDVPFGF QTVTSDVNKL SSFYSLKLIK RLYVDKSLNL STEFISSTKR PYAKELETVD FKDKLEETKG QINNSIKDLT DGHFENILAD NSVNDQTKIL VVNAAYFVGK WMKKFSESET KECFRVVK
Isotype:	IgG
Cross-Reactivity:	Human, Mouse
Characteristics:	Polyclonal Antibodies

Target Details

Target:	SERPINB5
---------	----------

## Target Details

---

Alternative Name:	SERPINB5 ( <a href="#">SERPINB5 Products</a> )
Background:	Tumor suppressor. It blocks the growth, invasion, and metastatic properties of mammary tumors. As it does not undergo the S (stressed to R (relaxed conformational transition characteristic of active serpins, it exhibits no serine protease inhibitory activity.,SERPINB5,PI5,maspin,serpin B5,Cancer,Tumor suppressors,SERPINB5
Molecular Weight:	25 kDa/42 kDa
Gene ID:	5268
UniProt:	<a href="#">P36952</a>
Pathways:	<a href="#">p53 Signaling</a>

## Application Details

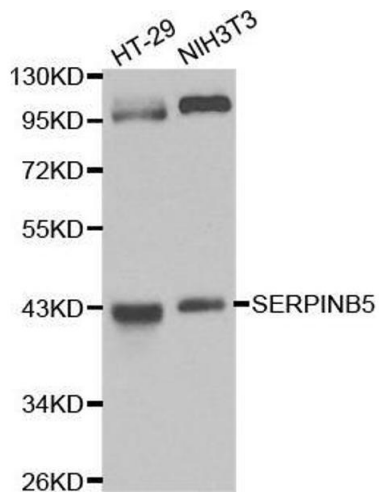
---

Application Notes:	WB,1:500 - 1:2000
Restrictions:	For Research Use only

## Handling

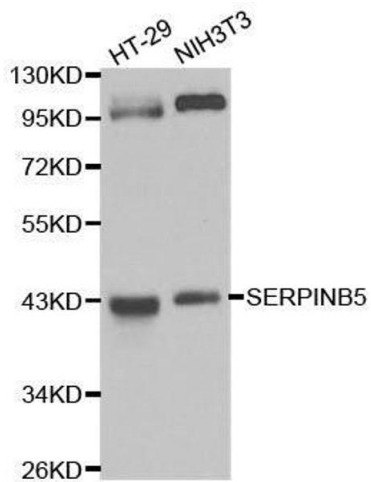
---

Format:	Liquid
Buffer:	PBS with 0.02 % sodium azide,50 % glycerol, pH 7.3.
Preservative:	Sodium azide
Precaution of Use:	This product contains Sodium azide: a POISONOUS AND HAZARDOUS SUBSTANCE which should be handled by trained staff only.
Handling Advice:	Avoid freeze / thaw cycles
Storage:	-20 °C
Storage Comment:	Store at -20°C. Avoid freeze / thaw cycles.



#### Western Blotting

**Image 1.** Western blot analysis of HT-29 cell and NIH3T3 cell lysate using SERPINB5 antibody.



#### Western Blotting

**Image 2.** Western blot analysis of extracts of various cell lines, using SERPINB5 antibody.