

Datasheet for ABIN302166

anti-CX3CL1 antibody (Internal Region)**3** Images[Go to Product page](#)

Overview

Quantity:	100 µg
Target:	CX3CL1
Binding Specificity:	Internal Region
Reactivity:	Human
Host:	Goat
Clonality:	Polyclonal
Conjugate:	This CX3CL1 antibody is un-conjugated
Application:	ELISA, Immunohistochemistry (IHC), Flow Cytometry (FACS)

Product Details

Purpose:	ABCD3
Immunogen:	Peptide with sequence C-PDGREDQKRKGISD, from the internal region of the protein sequence according to NP_002849.1.
Sequence:	PDGREDQKRK GISD
Isotype:	IgG
Specificity:	This antibody is expected to recognize one isoform (NP_002849.1) only.
Cross-Reactivity:	Human, Mouse, Rat
Purification:	Purified from goat serum by ammonium sulphate precipitation followed by antigen affinity chromatography using the immunizing peptide.
Grade:	Verified

Target Details

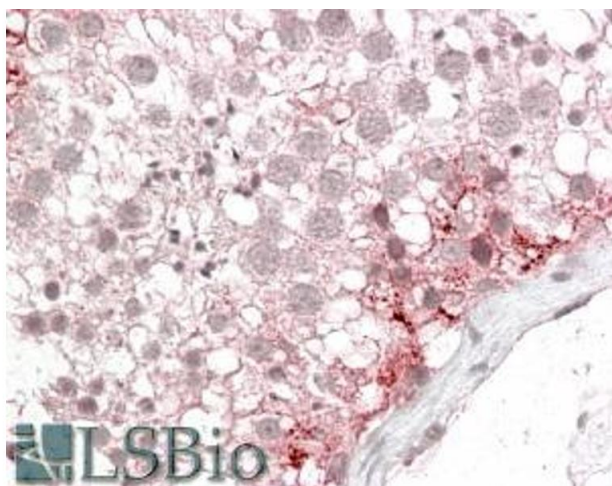
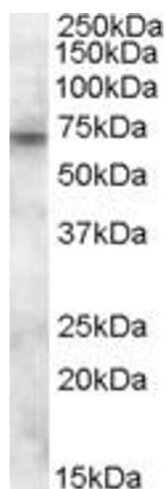
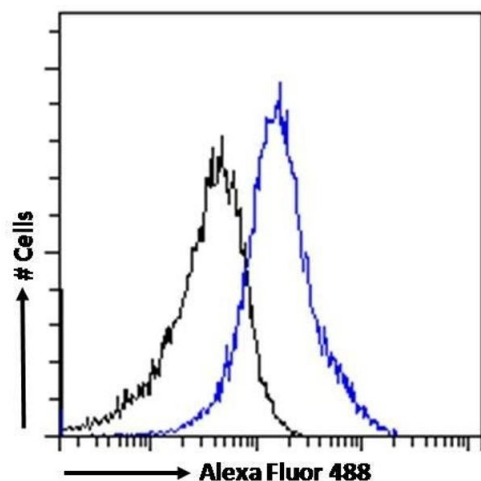
Target:	CX3CL1
Alternative Name:	ABCD3 (CX3CL1 Products)
Background:	ABCD3, ATP-binding cassette, sub-family D (ALD), member 3, ABC43, PMP70, PXMP1, ATP-binding cassette, sub-family D, member 3, Peroxisomal membrane protein-1 (70kD), dJ824018.1 (ATP-binding cassette, sub-family D (ALD), member 3 (PMP70, PXMP1)), peroxisoma
Gene ID:	5825, 19299, 25270
NCBI Accession:	NP_002849
Pathways:	Synaptic Membrane

Application Details

Application Notes:	Immunohistochemistry: In paraffin embedded Human Testis shows vesicular staining in Sertoli cells. Recommended concentration: 2.5-3.8 µg/mL. Peptide ELISA: antibody detection limit dilution 1:16000.
Comment:	Flow Cytometry: Flow cytometric analysis of A431 cells. Recommended concentration: 10ug/ml.
Restrictions:	For Research Use only

Handling

Format:	Liquid
Concentration:	0.5 mg/mL
Buffer:	Supplied at 0.5 mg/mL in Tris saline, 0.02 % sodium azide, pH 7.3 with 0.5 % bovine serum albumin.
Preservative:	Sodium azide
Precaution of Use:	This product contains Sodium azide: a POISONOUS AND HAZARDOUS SUBSTANCE which should be handled by trained staff only.
Handling Advice:	Minimize freezing and thawing.
Storage:	-20 °C
Storage Comment:	Aliquot and store at -20°C, with minimal freeze/thawing. A working aliquot may be refrigerated at 4°C for a few weeks and still remain viable.



Flow Cytometry

Image 1. (ABIN302166) Flow cytometric analysis of paraformaldehyde fixed A431 cells (blue line), permeabilized with 0.5 % Triton. Primary incubation 1hr (10 µg/mL) followed by Alexa Fluor 488 secondary antibody (1 µg/mL). IgG control: Unimmunized goat IgG (black line) fol

Western Blotting

Image 2. ABIN302166 (0.2µg/ml) staining of Human Kidney lysate (35µg protein in RIPA buffer). Detected by chemiluminescence.

Immunohistochemistry

Image 3. ABIN302166 (3.8µg/ml) staining of paraffin embedded Human Testis. Steamed antigen retrieval with citrate buffer pH 6, AP-staining.