



[Go to Product page](#)

Datasheet for ABIN3021671

anti-CDC42 antibody (AA 25-191)

8 Images

2 Publications

Overview

Quantity:	100 µL
Target:	CDC42
Binding Specificity:	AA 25-191
Reactivity:	Human
Host:	Rabbit
Clonality:	Polyclonal
Conjugate:	This CDC42 antibody is un-conjugated
Application:	Western Blotting (WB), Immunohistochemistry (IHC), Immunofluorescence (IF)

Product Details

Immunogen:	Recombinant fusion protein containing a sequence corresponding to amino acids 25-191 of human CDC42 (NP_001782.1).
Sequence:	TNKFPEYVP TVFDNYAVTV MIGGEPYTLG LFDTAGQEDY DLRPLSYPQ TDVFLVCFSV VSPSSFENVK EKWVPEITHH CPKTPFLLVG TQIDLRDDPS TIEKLAKNKQ KPITPETAEK LARDLKAVKY VECSALTQKG LKNVFDEAIL AALEPPEPKK SRRCVLL
Isotype:	IgG
Cross-Reactivity:	Human, Mouse, Rat
Characteristics:	Polyclonal Antibodies
Purification:	Affinity purification

Target Details

Target: CDC42

Alternative Name: CDC42 ([CDC42 Products](#))

Background: The protein encoded by this gene is a small GTPase of the Rho-subfamily, which regulates signaling pathways that control diverse cellular functions including cell morphology, migration, endocytosis and cell cycle progression. This protein is highly similar to *Saccharomyces cerevisiae* Cdc 42, and is able to complement the yeast *cdc42-1* mutant. The product of oncogene *Dbl* was reported to specifically catalyze the dissociation of GDP from this protein. This protein could regulate actin polymerization through its direct binding to Neural Wiskott-Aldrich syndrome protein (N-WASP), which subsequently activates Arp2/3 complex. Alternative splicing of this gene results in multiple transcript variants. Pseudogenes of this gene have been identified on chromosomes 3, 4, 5, 7, 8 and 20.,CDC42,CDC42Hs,G25K,TKS,Epigenetics & Nuclear Signaling,Cancer,Signal Transduction,G protein signaling,Signal Transduction,Kinase,ErbB-HER Signaling Pathway,MAPK-JNK Signaling Pathway,Cell Biology & Developmental Biology,Cell Cycle,Centrosome,Cell Adhesion,Cytoskeleton,Microtubules,Actins,TGF-b-Smad Signaling Pathway,Immunology & Inflammation,Cytokines,B Cell Receptor Signaling Pathway,T Cell Receptor Signaling Pathway,CDC42

Molecular Weight: 21 kDa

Gene ID: 998

UniProt: [P60953](#)

Pathways: [MAPK Signaling](#), [Microtubule Dynamics](#), [RTK Signaling](#), [WNT Signaling](#), [TCR Signaling](#), [EGFR Signaling Pathway](#), [Regulation of Actin Filament Polymerization](#), [Regulation of Muscle Cell Differentiation](#), [Cell-Cell Junction Organization](#), [Maintenance of Protein Location](#), [Skeletal Muscle Fiber Development](#), [Signaling Events mediated by VEGFR1 and VEGFR2](#), [EGFR Downregulation](#), [VEGF Signaling](#)

Application Details

Application Notes: WB,1:500 - 1:2000,IHC,1:50 - 1:200,IF,1:50 - 1:200

Restrictions: For Research Use only

Handling

Format: Liquid

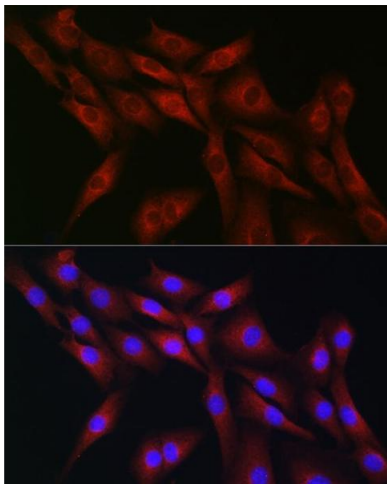
Handling

Buffer:	PBS with 0.02 % sodium azide, 50 % glycerol, pH 7.3.
Preservative:	Sodium azide
Precaution of Use:	This product contains Sodium azide: a POISONOUS AND HAZARDOUS SUBSTANCE which should be handled by trained staff only.
Handling Advice:	Avoid freeze / thaw cycles
Storage:	-20 °C
Storage Comment:	Store at -20°C. Avoid freeze / thaw cycles.

Publications

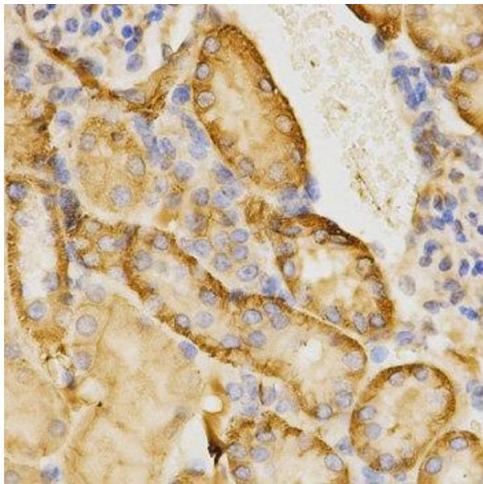
Product cited in: Zhou, Jiang, Dong, Yan, You, Su, Gong: "The proteins interacting with C-terminal of μ receptor are identified by bacterial two-hybrid system from brain cDNA library in morphine-dependent rats." in: **Life sciences**, Vol. 143, pp. 156-67, (2016) ([PubMed](#)).

Images



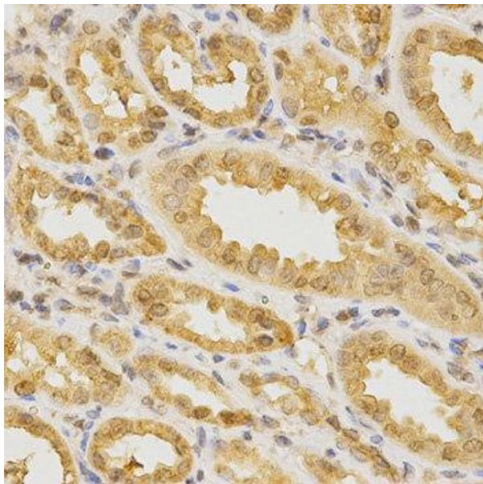
Immunofluorescence

Image 1. Immunofluorescence analysis of NIH-3T3 cells using CDC42 Rabbit pAb (ABIN3021670, ABIN3021671, ABIN3021672 and ABIN6215499) at dilution of 1:50 (40x lens). Blue: DAPI for nuclear staining.



Immunohistochemistry

Image 2. Immunohistochemistry of paraffin-embedded mouse kidney using CDC42 antibody at dilution of 1:200 (x400 lens)



Immunohistochemistry

Image 3. Immunohistochemistry of paraffin-embedded human kidney using CDC42 antibody at dilution of 1:200 (x400 lens)

Please check the [product details page](#) for more images. Overall 8 images are available for ABIN3021671.