

Datasheet for ABIN3021675  
**anti-CREB1 antibody**



[Go to Product page](#)

7 Images

## Overview

Quantity:	500 µL
Target:	CREB1
Reactivity:	Human, Mouse, Rat
Host:	Rabbit
Clonality:	Polyclonal
Conjugate:	This CREB1 antibody is un-conjugated
Application:	Western Blotting (WB), Immunohistochemistry (IHC)

## Product Details

Immunogen:	Recombinant protein of human CREB1
Isotype:	IgG
Purification:	Affinity purification

## Target Details

Target:	CREB1
Alternative Name:	CREB1 ( <a href="#">CREB1 Products</a> )
Background:	CREB is a bZIP transcription factor that activates target genes through cAMP response elements. CREB is able to mediate signals from numerous physiological stimuli, resulting in regulation of a broad array of cellular responses. While CREB is expressed in numerous tissues, it plays a large regulatory role in the nervous system. CREB is believed to play a key role in promoting neuronal survival, precursor proliferation, neurite outgrowth, and neuronal

## Target Details

differentiation in certain neuronal populations. Additionally, CREB signaling is involved in learning and memory in several organisms. CREB is able to selectively activate numerous downstream genes through interactions with different dimerization partners. CREB is activated by phosphorylation at Ser133 by various signaling pathways including Erk, Ca<sup>2+</sup>, and stress signaling. Some of the kinases involved in phosphorylating CREB at Ser133 are p90RSK, MSK, CaMKIV, and MAPKAPK-2.

Synonyms: CREB1, CREB, MGC9284

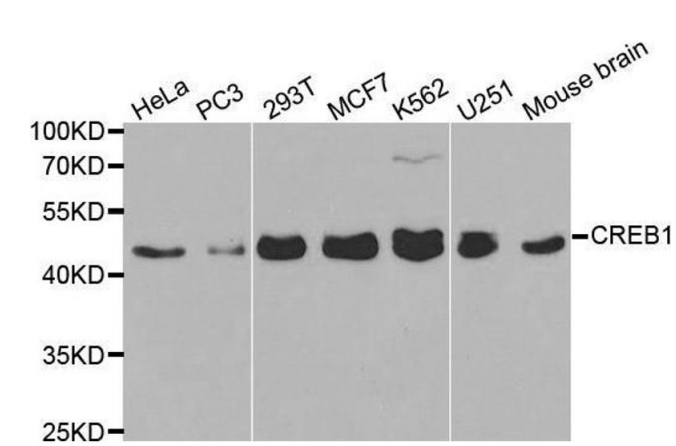
Gene ID:	1385
UniProt:	<a href="#">P16220</a>
Pathways:	<a href="#">TLR Signaling</a> , <a href="#">Fc-epsilon Receptor Signaling Pathway</a> , <a href="#">EGFR Signaling Pathway</a> , <a href="#">Neurotrophin Signaling Pathway</a> , <a href="#">Thyroid Hormone Synthesis</a> , <a href="#">Activation of Innate immune Response</a> , <a href="#">Myometrial Relaxation and Contraction</a> , <a href="#">Regulation of Cell Size</a> , <a href="#">Toll-Like Receptors Cascades</a> , <a href="#">G-protein mediated Events</a> , <a href="#">Interaction of EGFR with phospholipase C-gamma</a> , <a href="#">Positive Regulation of fat Cell Differentiation</a>

## Application Details

Application Notes:	Recommended dilutions: WB: 1:500-1:2000, IHC: 1:50-1:200
Restrictions:	For Research Use only

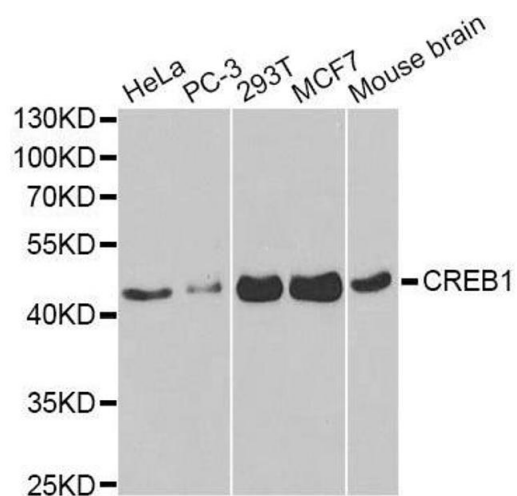
## Handling

Format:	Liquid
Buffer:	PBS with 0.02 % sodium azide, 50 % glycerol, pH 7.3
Preservative:	Sodium azide
Precaution of Use:	This product contains sodium azide: a POISONOUS AND HAZARDOUS SUBSTANCE which should be handled by trained staff only.
Handling Advice:	Avoid freeze / thaw cycles
Storage:	-20 °C/-80 °C



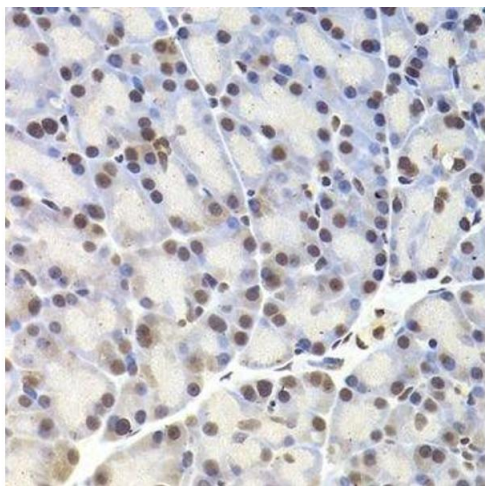
Western Blotting

**Image 1.** Western blot analysis of extracts of various cell lines, using CREB1 antibody.



Western Blotting

**Image 2.** Western blot analysis of extracts of various cell lines, using CREB1 antibody.



Immunohistochemistry (Paraffin-embedded Sections)

**Image 3.** Immunohistochemistry of paraffin-embedded rat pancreas using CREB1 Antibody.

Please check the [product details page](#) for more images. Overall 7 images are available for ABIN3021675.