



[Go to Product page](#)

Datasheet for ABIN302168  
**anti-ZRANB1 antibody (C-Term)**

2 Images

Overview

Quantity:	100 µg
Target:	ZRANB1
Binding Specificity:	C-Term
Reactivity:	Human
Host:	Goat
Clonality:	Polyclonal
Conjugate:	This ZRANB1 antibody is un-conjugated
Application:	Western Blotting (WB), ELISA

Product Details

Purpose:	TRABID / ZRANB1
Immunogen:	Peptide with sequence KWLDYRQIRPCTS, from the C Terminus of the protein sequence according to NP_060050.2.
Sequence:	KWLDYRQIR PCTS
Isotype:	IgG
Cross-Reactivity:	Cow, Dog, Human, Mouse, Pig, Rat
Purification:	Purified from goat serum by ammonium sulphate precipitation followed by antigen affinity chromatography using the immunizing peptide.
Grade:	Verified

## Target Details

---

Target:	ZRANB1
Alternative Name:	ZRANB1 ( <a href="#">ZRANB1 Products</a> )
Background:	ZRANB1, TRABID, zinc finger, RAN-binding domain containing 1, DKFZp762P2216, TRAF-binding protein domain, zinc finger, RAN-binding domain containing 1 protein
Gene ID:	54764, 360216
NCBI Accession:	<a href="#">NP_060050</a>

## Application Details

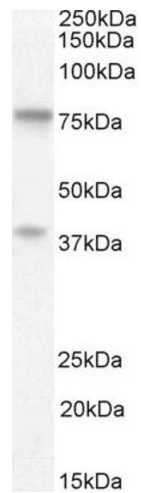
---

Application Notes:	Western Blot: Approx. 80 kDa bands observed in Human Cerebellum lysates (calculated MW of 81.0 kDa according to NP_060050.2). An additional band of unknown identity was also consistently observed at 38 kDa. Recommended concentration: 0.5-2 µg/mL. Primary i Peptide ELISA: antibody detection limit dilution 1:4000.
Restrictions:	For Research Use only

## Handling

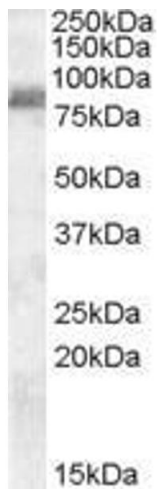
---

Format:	Liquid
Concentration:	0.5 mg/mL
Buffer:	Supplied at 0.5 mg/mL in Tris saline, 0.02 % sodium azide, pH 7.3 with 0.5 % bovine serum albumin.
Preservative:	Sodium azide
Precaution of Use:	This product contains Sodium azide: a POISONOUS AND HAZARDOUS SUBSTANCE which should be handled by trained staff only.
Handling Advice:	Minimize freezing and thawing.
Storage:	-20 °C
Storage Comment:	Aliquot and store at -20°C, with minimal freeze/thawing. A working aliquot may be refrigerated at 4°C for a few weeks and still remain viable.



#### Western Blotting

**Image 1.** (ABIN302168) (1 µg/mL) staining of Human Cerebellum lysate (35 µg protein in RIPA buffer). Detected by chemiluminescence



#### Western Blotting

**Image 2.** ABIN302168 (0.1 µg/ml) staining of Human Cerebellum lysate (35 µg protein in RIPA buffer). Primary incubation was 1 hour. Detected by chemiluminescence.