

Datasheet for ABIN3021709
anti-MMP3 antibody (AA 248-477)



[Go to Product page](#)

6 Images

1 Publication

Overview

Quantity:	100 µL
Target:	MMP3
Binding Specificity:	AA 248-477
Reactivity:	Human
Host:	Rabbit
Clonality:	Polyclonal
Conjugate:	This MMP3 antibody is un-conjugated
Application:	Western Blotting (WB), Immunohistochemistry (IHC), Immunofluorescence (IF)

Product Details

Immunogen:	Recombinant fusion protein containing a sequence corresponding to amino acids 248-477 of human MMP3 (NP_002413.1).
Sequence:	RFRLSQDDIN GIQSLYGPPP DSPETPLVPT EPVPPEPGTP ANCDPALSFD AVSTLRGEIL IFKDRHFWRK SLRKLEPELH LISSFWPSLP SGVDAAYEVT SKDLVFIFKG NQFWAIRGNE VRAGYPRGIH TLGFPPTVRK IDAAISDKEK NKTYFFVEDK YWRFDEKRNS MEPGFPKQIA EDFPGIDSKI DAVFEEFGFF YFFTGSSQLE FDPNAKKVTH TLKSNSWLNC
Isotype:	IgG
Cross-Reactivity:	Human, Mouse, Rat
Characteristics:	Polyclonal Antibodies

Target Details

Target:	MMP3
Alternative Name:	MMP3 (MMP3 Products)
Background:	Proteins of the matrix metalloproteinase (MMP) family are involved in the breakdown of extracellular matrix in normal physiological processes, such as embryonic development, reproduction, and tissue remodeling, as well as in disease processes, such as arthritis and metastasis. Most MMP's are secreted as inactive proproteins which are activated when cleaved by extracellular proteinases. This gene encodes an enzyme which degrades fibronectin, laminin, collagens III, IV, IX, and X, and cartilage proteoglycans. The enzyme is thought to be involved in wound repair, progression of atherosclerosis, and tumor initiation. The gene is part of a cluster of MMP genes which localize to chromosome 11q22.3.,MMP3,CHDS6,MMP-3,SL-1,STMY,STMY1,STR1,Cancer,Tumor biomarkers,Invasion and Metastasis,Signal Transduction,G protein signaling,G2/M DNA Damage Checkpoint,Cell Biology & Developmental Biology,Cytoskeleton,Extracellular Matrix,MMPs,Ubiquitin,Cardiovascular,Angiogenesis,MMP3
Molecular Weight:	53 kDa
Gene ID:	4314
UniProt:	P08254

Application Details

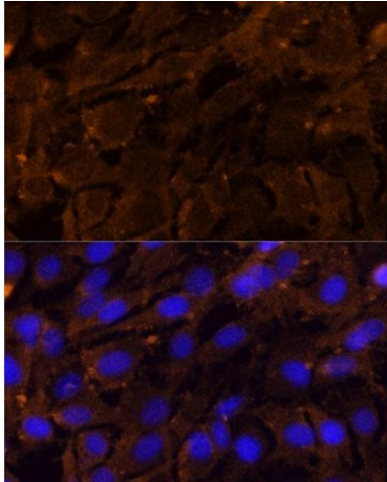
Application Notes:	WB,1:500 - 1:2000,IHC,1:50 - 1:200,IF,1:50 - 1:100
Restrictions:	For Research Use only

Handling

Format:	Liquid
Buffer:	PBS with 0.02 % sodium azide,50 % glycerol, pH 7.3.
Preservative:	Sodium azide
Precaution of Use:	This product contains Sodium azide: a POISONOUS AND HAZARDOUS SUBSTANCE which should be handled by trained staff only.
Handling Advice:	Avoid freeze / thaw cycles
Storage:	-20 °C
Storage Comment:	Store at -20°C. Avoid freeze / thaw cycles.

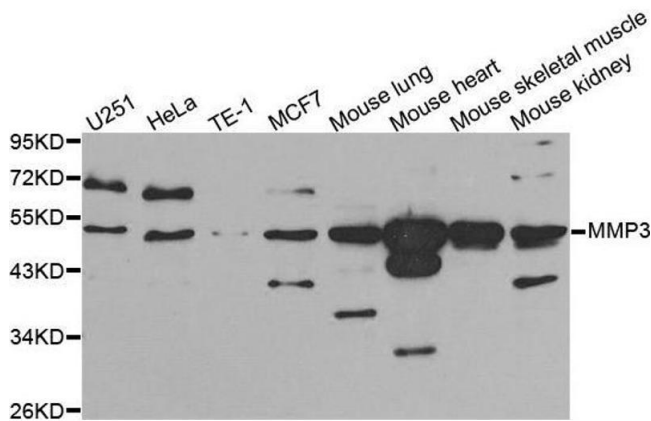
Product cited in: Xia, Zhang, Ge: "C/EBP β Mediates TNF- α -Induced Cancer Cell Migration by Inducing MMP Expression Dependent on p38 MAPK." in: **Journal of cellular biochemistry**, (2015) ([PubMed](#)).

Images



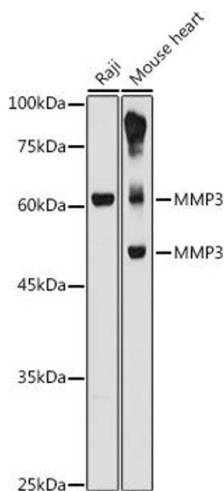
Immunofluorescence

Image 1. Immunofluorescence analysis of C6 cells using MMP3 Polyclonal Antibody (ABIN3021708, ABIN3021709, ABIN3021710 and ABIN6215578) at dilution of 1:100 (40x lens). Blue: DAPI for nuclear staining.



Western Blotting

Image 2. Western blot analysis of extracts of various cell lines, using MMP3 antibody.



Western Blotting

Image 3. Western blot analysis of extracts of various cell lines, using MMP3 antibody (ABIN3021708, ABIN3021709, ABIN3021710 and ABIN6215578) at 1:1000 dilution. Secondary antibody: HRP Goat Anti-Rabbit IgG (H+L) (ABIN1684268 and ABIN3020597) at 1:10000 dilution. Lysates/proteins: 25 μ g per lane. Blocking buffer: 3 % nonfat dry milk in TBST. Detection: ECL Basic Kit (RM00020). Exposure time: 10s.

Please check the [product details page](#) for more images. Overall 6 images are available for ABIN3021709.