

Datasheet for ABIN3021712  
**anti-RASSF1 antibody (AA 101-340)**

## 3 Images

[Go to Product page](#)

## Overview

Quantity:	100 µL
Target:	RASSF1
Binding Specificity:	AA 101-340
Reactivity:	Human
Host:	Rabbit
Clonality:	Polyclonal
Conjugate:	This RASSF1 antibody is un-conjugated
Application:	Western Blotting (WB)

## Product Details

Immunogen:	Recombinant fusion protein containing a sequence corresponding to amino acids 101-340 of human RASSF1 (NP_009113.3).
Sequence:	CCGPRDLGWE PAVERDTNVD EPVEWETPDL SQAEIEQKIK EYNAQINSNL FMSLNKDGSY TGFIKVQLKL VRPVSVPSSK KPSSLQDARR GPGRGTSVRR RTSFYLPKDA VKHLHVLSRT RAREVIEALL RKFLVDDPR KFALFERAER HGQVYLRKLL DDEQPLRLRL LAGPSDKALS FVLKENDSGE VNWDAFSMPE LHNFLRILQR EEEEHLRQIL QKYSYCRQKI QEALHACPLG
Isotype:	IgG
Cross-Reactivity:	Human, Mouse
Characteristics:	Polyclonal Antibodies

## Target Details

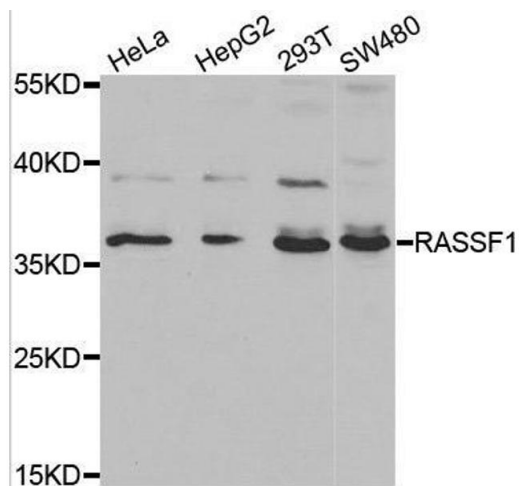
Target:	RASSF1
Alternative Name:	RASSF1 ( <a href="#">RASSF1 Products</a> )
Background:	<p>This gene encodes a protein similar to the RAS effector proteins. Loss or altered expression of this gene has been associated with the pathogenesis of a variety of cancers, which suggests the tumor suppressor function of this gene. The inactivation of this gene was found to be correlated with the hypermethylation of its CpG-island promoter region. The encoded protein was found to interact with DNA repair protein XPA. The protein was also shown to inhibit the accumulation of cyclin D1, and thus induce cell cycle arrest. Several alternatively spliced transcript variants of this gene encoding distinct isoforms have been reported.,RASSF1,123F2,NORE2A,RASSF1A,RDA32,REH3P21,Epigenetics &amp; Nuclear Signaling,DNA Damage &amp; Repair,Cancer,Tumor suppressors,Signal Transduction,G protein signaling,Signal Transduction,Cell Biology &amp; Developmental Biology,Apoptosis,Cell Cycle,Cell cycle inhibitors,RASSF1</p>
Molecular Weight:	8 kDa/9 kDa/16 kDa/21 kDa/31 kDa/38 kDa/39 kDa
Gene ID:	11186
UniProt:	<a href="#">Q9NS23</a>

## Application Details

Application Notes:	WB,1:500 - 1:2000
Restrictions:	For Research Use only

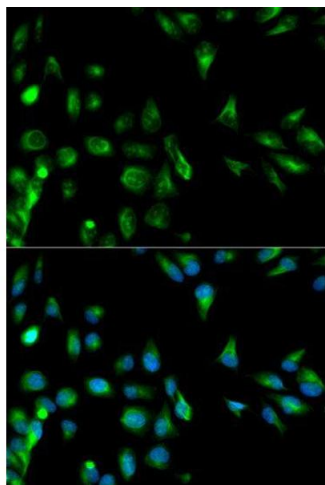
## Handling

Format:	Liquid
Buffer:	PBS with 0.02 % sodium azide,50 % glycerol, pH 7.3.
Preservative:	Sodium azide
Precaution of Use:	This product contains Sodium azide: a POISONOUS AND HAZARDOUS SUBSTANCE which should be handled by trained staff only.
Handling Advice:	Avoid freeze / thaw cycles
Storage:	-20 °C
Storage Comment:	Store at -20°C. Avoid freeze / thaw cycles.



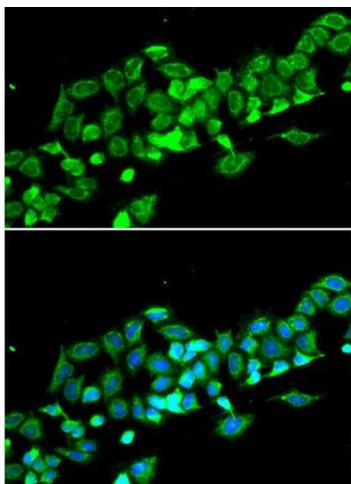
Western Blotting

**Image 1.** Western blot analysis of extracts of various cell lines, using RASSF1 antibody.



Immunofluorescence

**Image 2.** Immunofluorescence analysis of HeLa cell using RASSF1 antibody. Blue: DAPI for nuclear staining.



Immunofluorescence

**Image 3.** Immunofluorescence analysis of MCF-7 cell using RASSF1 antibody. Blue: DAPI for nuclear staining.