



[Go to Product page](#)

Datasheet for ABIN302174

## anti-Apolipoprotein L 4 antibody (C-Term)

### 2 Images

#### Overview

Quantity:	100 µg
Target:	Apolipoprotein L 4 (APOL4)
Binding Specificity:	C-Term
Reactivity:	Human
Host:	Goat
Clonality:	Polyclonal
Conjugate:	This Apolipoprotein L 4 antibody is un-conjugated
Application:	Western Blotting (WB), ELISA, Immunohistochemistry (IHC)

#### Product Details

Purpose:	APOL4 (C Terminus)
Immunogen:	Peptide with sequence C-ENLNELTHIHQSLK, from the C Terminus of the protein sequence according to NP_085146.2, NP_663693.1.
Sequence:	ENLNELTHIH QSLK
Isotype:	IgG
Specificity:	This antibody is expected to recognize both reported isoforms (NP_085146.2 and NP_663693.1).
Cross-Reactivity:	Human
Purification:	Purified from goat serum by ammonium sulphate precipitation followed by antigen affinity chromatography using the immunizing peptide.

## Product Details

---

Grade: Verified

## Target Details

---

Target: Apolipoprotein L 4 (APOL4)

Alternative Name: APOL4 ([APOL4 Products](#))

Background: Apolipoprotein L4, APOL4, apolipoprotein L, 4, APOL-IV, APOLIV, OTTHUMP00000028937, apolipoprotein L-IV

Gene ID: 80832

NCBI Accession: [NP\\_085146](#), [NP\\_663693](#)

## Application Details

---

Application Notes: Immunohistochemistry: Paraffin embedded Human Skeletal Muscle. Recommended concentration: 5 µg/mL.  
Western Blot: Approx. 37 kDa band observed in Human Placenta lysates (calculated MW of 38.7 kDa according to NP\_085146.2). Recommended concentration: 0.3-1 µg/mL. Primary incubation was 1 hour. Two additional bands of unknown identity were also consist  
Peptide ELISA: antibody detection limit dilution 1:32000.

Restrictions: For Research Use only

## Handling

---

Format: Liquid

Concentration: 0.5 mg/mL

Buffer: Supplied at 0.5 mg/mL in Tris saline, 0.02 % sodium azide, pH 7.3 with 0.5 % bovine serum albumin.

Preservative: Sodium azide

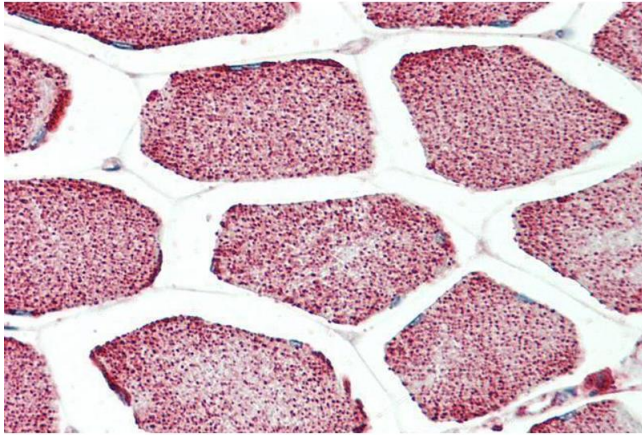
Precaution of Use: This product contains Sodium azide: a POISONOUS AND HAZARDOUS SUBSTANCE which should be handled by trained staff only.

Handling Advice: Minimize freezing and thawing.

Storage: -20 °C

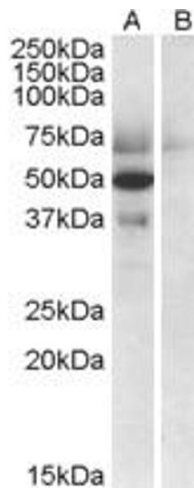
Storage Comment: Aliquot and store at -20°C, with minimal freeze/thawing. A working aliquot may be refrigerated

at 4°C for a few weeks and still remain viable.



#### Immunohistochemistry

**Image 1.** ABIN302174 (5µg/ml) staining of paraffin embedded Human Skeletal Muscle. Steamed antigen retrieval with citrate buffer pH 6, AP-staining.



#### Western Blotting

**Image 2.** ABIN302174 (0.5µg/ml) staining of Human Placenta lysate (35µg protein in RIPA buffer) with (B) and without (A) blocking with the immunising peptide. Detected by chemiluminescence.