

Datasheet for ABIN3021744
anti-ARHGDI antibody (AA 1-204)

5 Images

[Go to Product page](#)

Overview

Quantity:	100 µL
Target:	ARHGDI
Binding Specificity:	AA 1-204
Reactivity:	Human
Host:	Rabbit
Clonality:	Polyclonal
Conjugate:	This ARHGDI antibody is un-conjugated
Application:	Western Blotting (WB), Immunofluorescence (IF)

Product Details

Immunogen:	Recombinant fusion protein containing a sequence corresponding to amino acids 1-204 of human RhoGDI (NP_001172006.1).
Sequence:	MAEQPTAEQ LAQIAAENEE DEHSVNYKPP AQKSIQEIQE LDKDDDESLRK YKEALLGRVA VSADPNVNPV VVTGLTLVCS SAPGPLELDL TGDLESFKKQ SFVLKEGVEY RIKISFRVNR EIVSGMKYIQ HTYRKGVKID KTDYMGVGSYG PRAEYEFELT PVEEAPKGML ARGSYSIKSR FTDDDKTDHL SWEWNLTIKK DWKD
Isotype:	IgG
Cross-Reactivity:	Human, Mouse, Rat
Characteristics:	Polyclonal Antibodies
Purification:	Affinity purification

Target Details

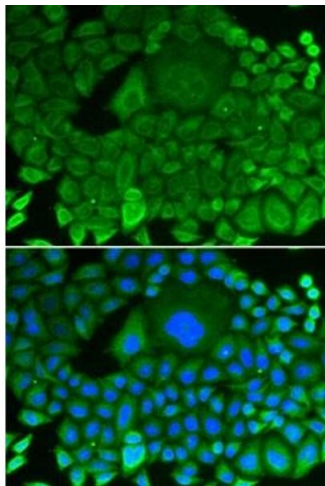
Target:	ARHGDI
Alternative Name:	ARHGDI (ARHGDI Products)
Background:	This gene encodes a protein that plays a key role in the regulation of signaling through Rho GTPases. The encoded protein inhibits the disassociation of Rho family members from GDP (guanine diphosphate), thereby maintaining these factors in an inactive state. Activity of this protein is important in a variety of cellular processes, and expression of this gene may be altered in tumors. Mutations in this gene have been found in individuals with nephrotic syndrome, type 8. Alternate splicing results in multiple transcript variants.,ARHGDI,GDI1,HEL-S-47e,NPHS8,RHOGDI,RHOGDI-1,Signal Transduction,G protein signaling,Signal Transduction,Cell Biology & Developmental Biology,Cytoskeleton,Extracellular Matrix,ARHGDI
Molecular Weight:	18 kDa/23 kDa
Gene ID:	396
UniProt:	P52565
Pathways:	Neurotrophin Signaling Pathway

Application Details

Application Notes:	WB,1:500 - 1:2000,IF,1:50 - 1:200
Restrictions:	For Research Use only

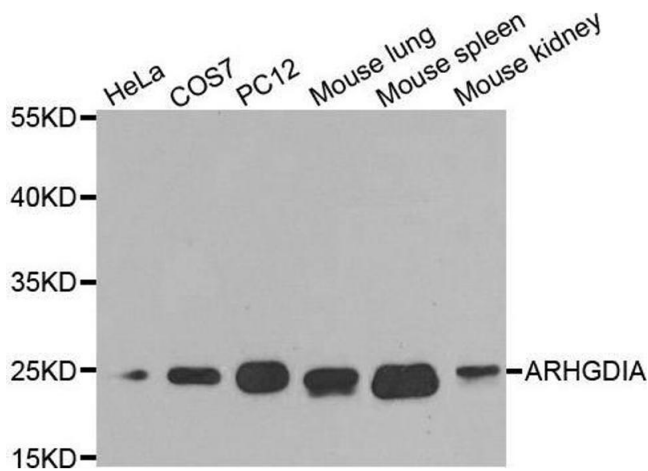
Handling

Format:	Liquid
Buffer:	PBS with 0.02 % sodium azide,50 % glycerol, pH 7.3.
Preservative:	Sodium azide
Precaution of Use:	This product contains Sodium azide: a POISONOUS AND HAZARDOUS SUBSTANCE which should be handled by trained staff only.
Handling Advice:	Avoid freeze / thaw cycles
Storage:	-20 °C
Storage Comment:	Store at -20°C. Avoid freeze / thaw cycles.



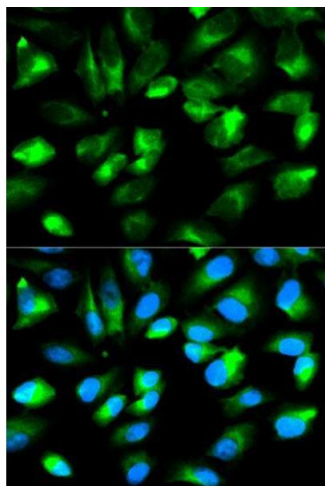
Immunofluorescence

Image 1. Immunofluorescence analysis of HeLa cells using RhoGDI antibody (ABIN3021743, ABIN3021744, ABIN3021745 and ABIN1512595). Blue: DAPI for nuclear staining.



Western Blotting

Image 2. Western blot analysis of extracts of various cell lines, using ARHGDI antibody.



Immunofluorescence

Image 3.

Please check the [product details page](#) for more images. Overall 5 images are available for ABIN3021744.