



[Go to Product page](#)

Datasheet for ABIN3021747  
**anti-SHMT2 antibody (AA 265-504)**

6 Images

Overview

Quantity:	100 µL
Target:	SHMT2
Binding Specificity:	AA 265-504
Reactivity:	Human
Host:	Rabbit
Clonality:	Polyclonal
Conjugate:	This SHMT2 antibody is un-conjugated
Application:	Western Blotting (WB), Immunohistochemistry (IHC), Immunofluorescence (IF), Immunoprecipitation (IP)

Product Details

Immunogen:	Recombinant fusion protein containing a sequence corresponding to amino acids 265-504 of human SHMT2 (NP_005403.2).
Sequence:	PSPFKHADIV TTTTHKTLRG ARSGLIFYRK GVKAVDPKTG REIPYTFEDR INFAVFPSLQ GGPHNHAIAA VAVALKQACT PMFREYSLQV LKNARAMADA LLERGYSLVS GGTDNHLVLV DLRPKGLDGA RAERVLELVS ITANKNTCPG DRSAITPGGL RLGAPALTSR QFREDDFRRV VDFIDEGVNI GLEVSKTAK LQDFKSFLK DSETSQRLAN LRQRVEQFAR AFPMPGFDEH
Isotype:	IgG
Cross-Reactivity:	Human, Mouse, Rat
Characteristics:	Polyclonal Antibodies

## Target Details

---

Target:	SHMT2
Alternative Name:	SHMT2 ( <a href="#">SHMT2 Products</a> )
Background:	This gene encodes the mitochondrial form of a pyridoxal phosphate-dependent enzyme that catalyzes the reversible reaction of serine and tetrahydrofolate to glycine and 5,10-methylene tetrahydrofolate. The encoded product is primarily responsible for glycine synthesis. The activity of the encoded protein has been suggested to be the primary source of intracellular glycine. The gene which encodes the cytosolic form of this enzyme is located on chromosome 17. Alternative splicing results in multiple transcript variants.,SHMT2,GLYA,HEL-S-51e,SHMT,Cancer,Signal Transduction,Endocrine & Metabolism,Mitochondrial metabolism,Mitochondrial markers,Amino acid metabolism,SHMT2
Molecular Weight:	53 kDa/54 kDa/55 kDa
Gene ID:	6472
UniProt:	<a href="#">P34897</a>

## Application Details

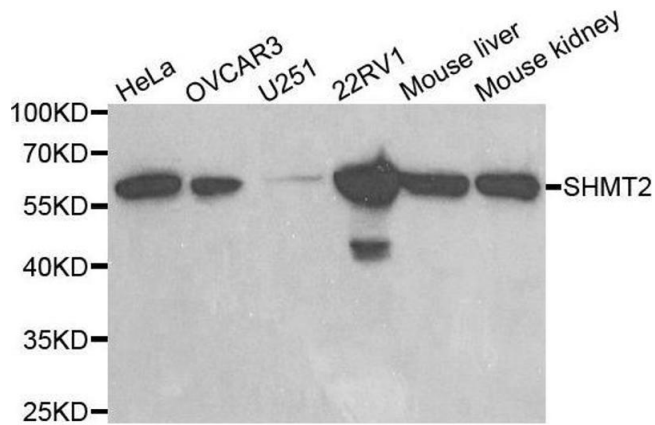
---

Application Notes:	WB,1:500 - 1:2000,IHC,1:50 - 1:200,IF,1:50 - 1:200,IP,1:50 - 1:200
Restrictions:	For Research Use only

## Handling

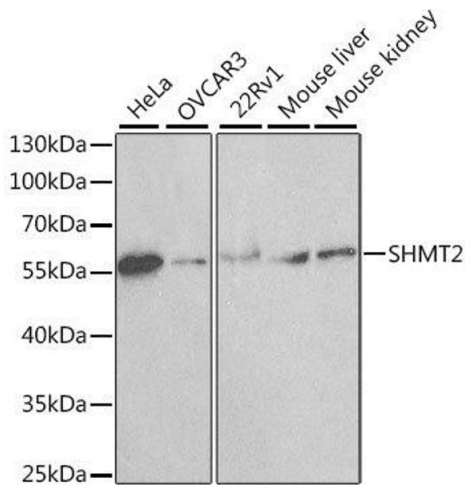
---

Format:	Liquid
Buffer:	PBS with 0.02 % sodium azide,50 % glycerol, pH 7.3.
Preservative:	Sodium azide
Precaution of Use:	This product contains Sodium azide: a POISONOUS AND HAZARDOUS SUBSTANCE which should be handled by trained staff only.
Handling Advice:	Avoid freeze / thaw cycles
Storage:	-20 °C
Storage Comment:	Store at -20°C. Avoid freeze / thaw cycles.



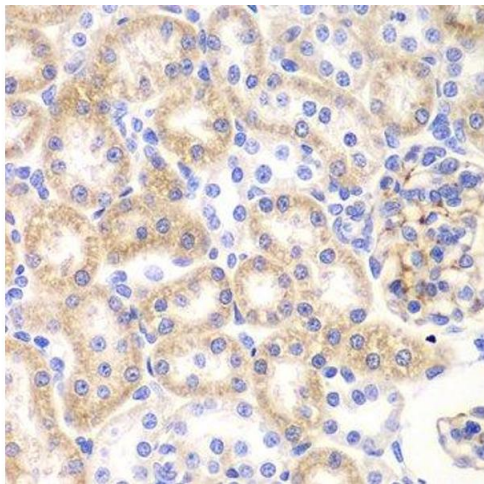
### Western Blotting

**Image 1.** Western blot analysis of extracts of various cell lines, using SHMT2 antibody.



### Western Blotting

**Image 2.** Western blot analysis of extracts of various cell lines, using SHMT2 antibody.



### Immunohistochemistry (Paraffin-embedded Sections)

**Image 3.** Immunohistochemistry of paraffin-embedded rat kidney using SHMT2 Antibody.

Please check the [product details page](#) for more images. Overall 6 images are available for ABIN3021747.