

Datasheet for ABIN3021753
anti-SRPX antibody (AA 40-320)



[Go to Product page](#)

3 Images

Overview

Quantity:	100 µL
Target:	SRPX
Binding Specificity:	AA 40-320
Reactivity:	Human
Host:	Rabbit
Clonality:	Polyclonal
Conjugate:	This SRPX antibody is un-conjugated
Application:	Western Blotting (WB), Immunohistochemistry (IHC), Immunofluorescence (IF)

Product Details

Immunogen:	Recombinant fusion protein containing a sequence corresponding to amino acids 40-320 of human SRPX (NP_006298.1).
Sequence:	EDDEVGYSHP RYKDTPWCSP IKVKYGDVYC RAPQGGYYKT ALGTRCDIRC QKGYELHGSS LLICQSNKRW SDKVICKQKR CPTLAMPANG GFKCVDGAYF NSRCEYYCSP GYTLKGERTV TCMDNKAWSG RPASCVDMEP PRIKCPVKE RIAEPNKLTV RVSWETPEGR DTADGILTDTV ILKGLPPGSN FPEGDHKIYQ TVYDRAENKG TCKFRVKVRV KRCGKLNAP E NGYMKCSSDG DNYGATCEFS CIGGYELQGS PARVCQSNLA WSGTEPTCAA M
Isotype:	IgG
Cross-Reactivity:	Human, Mouse
Characteristics:	Polyclonal Antibodies

Target Details

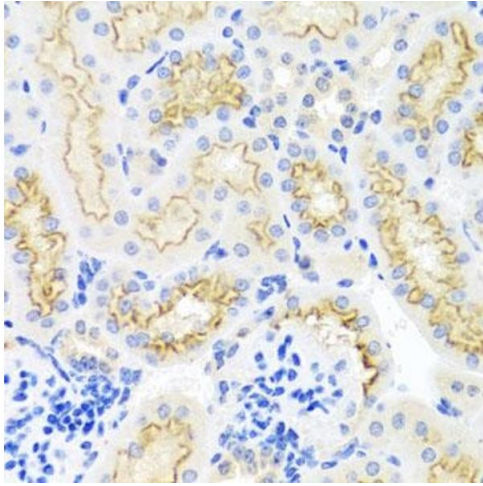
Target:	SRPX
Alternative Name:	SRPX (SRPX Products)
Background:	May be involved in phagocytosis during disk shedding, cell adhesion to cells other than the pigment epithelium or signal transduction.,SRPX,DRS,ETX1,HEL-S-83p,SRPX1,Cell Biology & Developmental Biology,SRPX
Molecular Weight:	41 kDa/45 kDa/49 kDa/51 kDa
Gene ID:	8406
UniProt:	P78539

Application Details

Application Notes:	WB,1:500 - 1:2000,IHC,1:50 - 1:100,IF,1:50 - 1:100
Restrictions:	For Research Use only

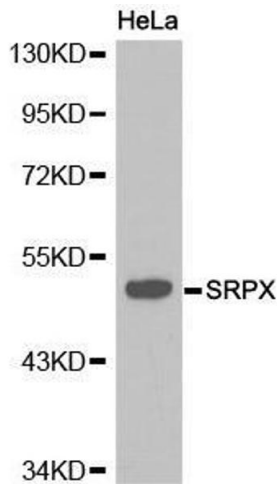
Handling

Format:	Liquid
Buffer:	PBS with 0.02 % sodium azide,50 % glycerol, pH 7.3.
Preservative:	Sodium azide
Precaution of Use:	This product contains Sodium azide: a POISONOUS AND HAZARDOUS SUBSTANCE which should be handled by trained staff only.
Handling Advice:	Avoid freeze / thaw cycles
Storage:	-20 °C
Storage Comment:	Store at -20°C. Avoid freeze / thaw cycles.



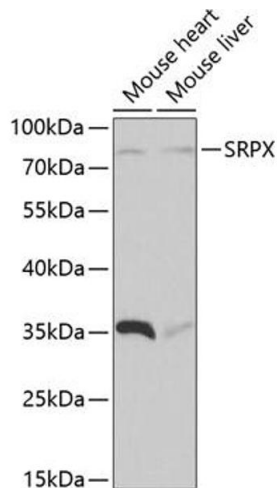
Immunohistochemistry

Image 1. Immunohistochemistry of paraffin-embedded mouse kidney using SRPX antibody at dilution of 1:100 (40x lens). Perform microwave antigen retrieval with 10 mM PBS buffer pH 7.2 before commencing with IHC staining protocol.



Western Blotting

Image 2.



Western Blotting

Image 3. Western blot analysis of extracts of various cell lines, using SRPX antibody at 1:1000 dilution. Secondary antibody: HRP Goat Anti-Rabbit IgG (H+L) (ABIN1684268 and ABIN3020597) at 1:10000 dilution. Lysates/proteins: 25 µg per lane. Blocking buffer: 3 % nonfat dry milk in TBST.