



[Go to Product page](#)

Datasheet for ABIN3021762
anti-APOH antibody (AA 21-345)

2 Images

Overview

| | |
|----------------------|--|
| Quantity: | 100 µL |
| Target: | APOH |
| Binding Specificity: | AA 21-345 |
| Reactivity: | Human |
| Host: | Rabbit |
| Clonality: | Polyclonal |
| Application: | Western Blotting (WB), Immunofluorescence (IF) |

Product Details

| | |
|-------------------|--|
| Immunogen: | Recombinant fusion protein containing a sequence corresponding to amino acids 21-345 of human APOH (NP_000033.2). |
| Sequence: | RTCPKPDDL P FSTVVPLKTF YEPGEEITYS CKPGYVSRGG MRKFCPLTG LWPINTLKCT PRVCPFAGIL ENGAVRYTTF EYPNTISFSC NTGFYLNAD SAKCTEEGKW SPELPVCAPI ICPPPSIPTF ATRLVYKPSA GNNSLYRDTA VFECLPQHAM FGNDTITCTT HGNWTKLPEC REVKCPFPSR PDNGFVNYP A KPTLYYKDKA TFGCHDGYSL DGPEEIECTK LGNWSAMPSC KASCKVPVKK ATVVYQGERV KIQEKFKNGM LHGDKVSFFC KNKEKKCSYT EDAQCIDGTI EVPKCFKEHS SLAFWKTDAS DVKPC |
| Isotype: | IgG |
| Cross-Reactivity: | Human |
| Characteristics: | Polyclonal Antibodies |
| Purification: | Affinity purification |

Target Details

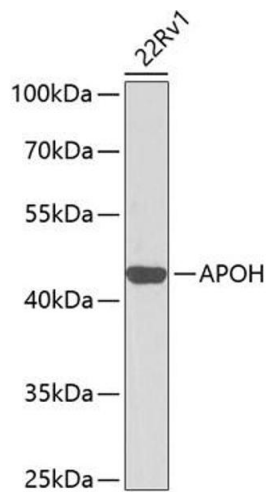
| | |
|-------------------|--|
| Target: | APOH |
| Alternative Name: | APOH (APOH Products) |
| Background: | Apolipoprotein H has been implicated in a variety of physiologic pathways including lipoprotein metabolism, coagulation, and the production of antiphospholipid autoantibodies. APOH may be a required cofactor for anionic phospholipid binding by the antiphospholipid autoantibodies found in sera of many patients with lupus and primary antiphospholipid syndrome, but it does not seem to be required for the reactivity of antiphospholipid autoantibodies associated with infections.,APOH,B2G1,B2GP1,BG,Cancer,Signal Transduction,Endocrine & Metabolism,Lipid Metabolism,Cardiovascular,Blood,Coagulation,APOH |
| Molecular Weight: | 38 kDa |
| Gene ID: | 350 |
| UniProt: | P02749 |

Application Details

| | |
|--------------------|-----------------------------------|
| Application Notes: | WB,1:500 - 1:2000,IF,1:50 - 1:200 |
| Restrictions: | For Research Use only |

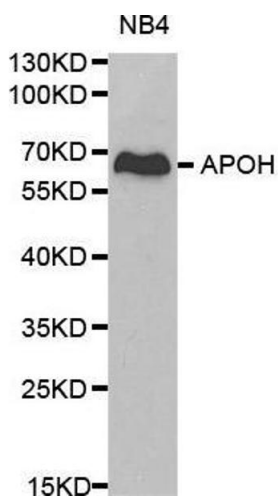
Handling

| | |
|--------------------|--|
| Format: | Liquid |
| Buffer: | PBS with 0.02 % sodium azide,50 % glycerol, pH 7.3. |
| Preservative: | Sodium azide |
| Precaution of Use: | This product contains Sodium azide: a POISONOUS AND HAZARDOUS SUBSTANCE which should be handled by trained staff only. |
| Handling Advice: | Avoid freeze / thaw cycles |
| Storage: | -20 °C |
| Storage Comment: | Store at -20°C. Avoid freeze / thaw cycles. |



Western Blotting

Image 1. Western blot analysis of extracts of 22Rv1 cells, using APOH antibody (ABIN3021761, ABIN3021762, ABIN3021763 and ABIN6215796) at 1:1000 dilution. Secondary antibody: HRP Goat Anti-Rabbit IgG (H+L) (ABIN1684268 and ABIN3020597) at 1:10000 dilution. Lysates/proteins: 25 µg per lane. Blocking buffer: 3 % nonfat dry milk in TBST. Detection: ECL Basic Kit (RM00020). Exposure time: 30s.



Western Blotting

Image 2. Western blot analysis of NB4 cell lysate using APOH antibody.