

Datasheet for ABIN3021770  
**anti-ARHGAP25 antibody (AA 1-370)**



[Go to Product page](#)

8 Images

Overview

Quantity:	100 µL
Target:	ARHGAP25
Binding Specificity:	AA 1-370
Reactivity:	Human
Host:	Rabbit
Clonality:	Polyclonal
Conjugate:	This ARHGAP25 antibody is un-conjugated
Application:	Western Blotting (WB), Immunohistochemistry (IHC), Immunofluorescence (IF)

Product Details

Immunogen:	Recombinant fusion protein containing a sequence corresponding to amino acids 1-370 of human ARHGAP25 (NP_001159748.1).
Sequence:	MSLGQSACLF LSIARSR SVM TGEQMAAFHP SSTPNPLERP IKMGWLKKQR SIVKNWQQRY FVLRAQQLYY YKDEEDTKPQ GCMYLPGCTI KEIATNPEEA GKFVFEIIPA SWDQNRMGQD SYVLMASSQA EMEEWVKFLR RVAGTPCGAV FGQRLDETVA YEQKFGPHLV PILVEKCAEF ILEHGRNEEG IFRLPGQDNL VKQLRDAFDA GERPSFDRDT DVHTVASLLK LYLRDLPEPV VPWSQYEGFL LCGQLTNAE AKAQQELMKQ LSILPRDNYS LLSYICRFLH EIQLNCAV NK MSVDNLATVI GVNLRISKVE DPAVIMRGTP QIQRVMTMMI RDHEVLFPKS KDIPLSPPAQ KNDPKKAPVA
Isotype:	IgG
Cross-Reactivity:	Human, Mouse, Rat

## Product Details

---

Characteristics: Polyclonal Antibodies

Purification: Affinity purification

## Target Details

---

Target: ARHGAP25

Alternative Name: ARHGAP25 ([ARHGAP25 Products](#))

Background: ARHGAPs, such as ARHGAP25, encode negative regulators of Rho GTPases (see ARHA, MIM 165390), which are implicated in actin remodeling, cell polarity, and cell migration (Katoh and Katoh, 2004 [PubMed 15254788]).[supplied by OMIM, Mar 2008],ARHGAP25,HEL-S-308,KAIA0053,Signal Transduction,G protein signaling,Signal Transduction,ARHGAP25

Molecular Weight: 51 kDa/69 kDa/72 kDa/73 kDa

Gene ID: 9938

UniProt: [P42331](#)

## Application Details

---

Application Notes: WB,1:500 - 1:2000,IHC,1:50 - 1:100,IF,1:50 - 1:100

Restrictions: For Research Use only

## Handling

---

Format: Liquid

Buffer: PBS with 0.02 % sodium azide,50 % glycerol, pH 7.3.

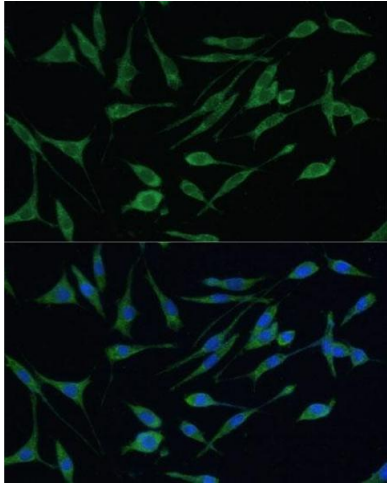
Preservative: Sodium azide

Precaution of Use: This product contains Sodium azide: a POISONOUS AND HAZARDOUS SUBSTANCE which should be handled by trained staff only.

Handling Advice: Avoid freeze / thaw cycles

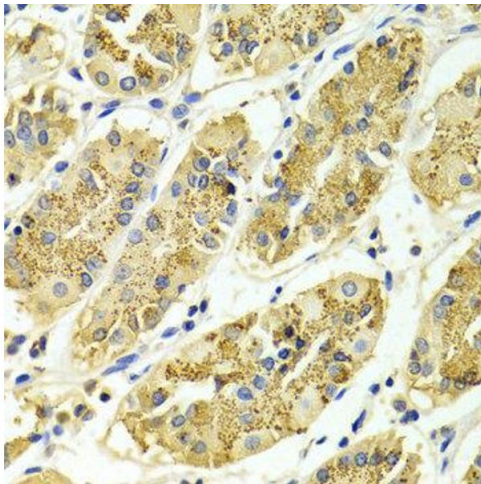
Storage: -20 °C

Storage Comment: Store at -20°C. Avoid freeze / thaw cycles.



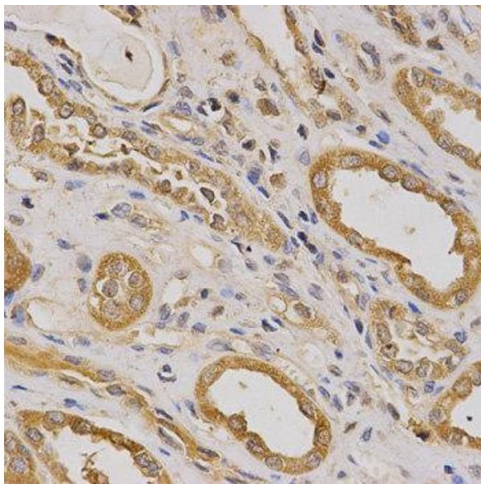
#### Immunofluorescence

**Image 1.** Immunofluorescence analysis of L929 cells using Polyclonal Antibody (ABIN3021769, ABIN3021770, ABIN3021771 and ABIN6215837) at dilution of 1:100 (40x lens). Blue: DAPI for nuclear staining.



#### Immunohistochemistry

**Image 2.** Immunohistochemistry of paraffin-embedded Human gastric using ARHGAP25 antibody at dilution of 1:100 (x400 lens).



#### Immunohistochemistry

**Image 3.** Immunohistochemistry of paraffin-embedded human kidney using ARHGAP25 antibody at dilution of 1:200 (x400 lens).

Please check the [product details page](#) for more images. Overall 8 images are available for ABIN3021770.