



[Go to Product page](#)

Datasheet for ABIN3021776
anti-GIPC2 antibody (AA 1-315)

3 Images

Overview

| | |
|----------------------|--------------------------------------|
| Quantity: | 100 µL |
| Target: | GIPC2 |
| Binding Specificity: | AA 1-315 |
| Reactivity: | Human |
| Host: | Rabbit |
| Clonality: | Polyclonal |
| Conjugate: | This GIPC2 antibody is un-conjugated |
| Application: | Western Blotting (WB) |

Product Details

| | |
|-------------------|---|
| Immunogen: | Recombinant fusion protein containing a sequence corresponding to amino acids 1-315 of human GIPC2 (NP_060125.4). |
| Sequence: | MPLKLRGKKK AKSKETAGLV EGEPTGAGGG SLSASRAPAR RLVFHAQLAH GSATGRVEGF SSIQELYAQI AGAFEISPSE ILYCTLNTPK IDMERLLGGQ LGLEDFIFAH VKGIEKEVNV YKSEDSLGLT ITDNGVGYAF IKRIKDGGVI DSVKTICVGD HIESINGENI VGWRHYDVAK KLIKELKKEEL FTMKLIPEPK AFEIELRSKA GKSSGEKIGC GRATLRLRSK GPATVEEMPS ETKAKAIEKI DDVLELYMGI RDIDLATTMF EAGKDKVNPDEFAVALDETL GDFAFPDEFV FDVWGVIGDA KRRGL |
| Isotype: | IgG |
| Cross-Reactivity: | Human, Mouse |
| Characteristics: | Polyclonal Antibodies |

Product Details

Purification: Affinity purification

Target Details

Target: GIPC2

Alternative Name: GIPC2 ([GIPC2 Products](#))

Background: GIPC2,SEMCAP-2,SEMCAP2,Signal Transduction,G protein signaling,G-Protein-Coupled Receptors(GPCR),GIPC2

Molecular Weight: 34 kDa

Gene ID: 54810

UniProt: [Q8TF65](#)

Application Details

Application Notes: WB,1:500 - 1:2000

Restrictions: For Research Use only

Handling

Format: Liquid

Buffer: PBS with 0.02 % sodium azide,50 % glycerol, pH 7.3.

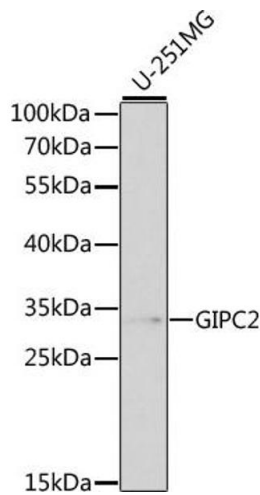
Preservative: Sodium azide

Precaution of Use: This product contains Sodium azide: a POISONOUS AND HAZARDOUS SUBSTANCE which should be handled by trained staff only.

Handling Advice: Avoid freeze / thaw cycles

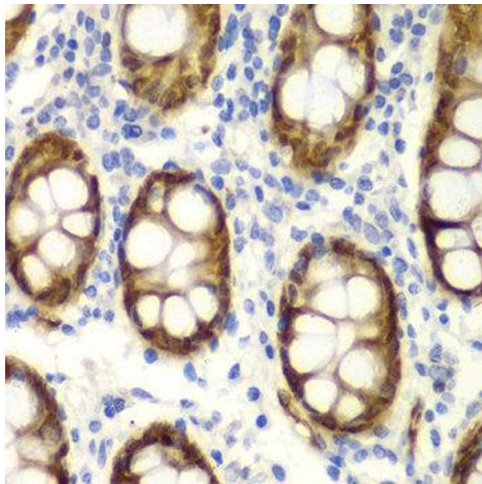
Storage: -20 °C

Storage Comment: Store at -20°C. Avoid freeze / thaw cycles.



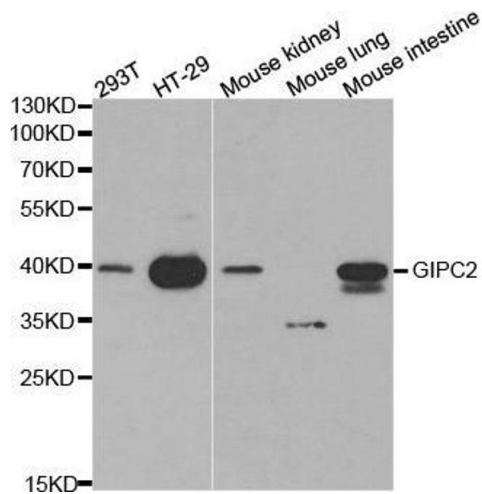
Western Blotting

Image 1. Western blot analysis of extracts of various cell lines, using GIPC2 antibody (ABIN3021775, ABIN3021776, ABIN3021777 and ABIN6215857) at 1:1000 dilution. Secondary antibody: HRP Goat Anti-Rabbit IgG (H+L) (ABIN1684268 and ABIN3020597) at 1:10000 dilution. Lysates/proteins: 25 µg per lane. Blocking buffer: 3 % nonfat dry milk in TBST. Detection: ECL Basic Kit (RM00020).



Immunohistochemistry

Image 2.



Western Blotting

Image 3. Western blot analysis of extracts of various cell lines, using GIPC2 antibody.