

Datasheet for ABIN3021796
anti-CD236/GYPC antibody (AA 1-128)[Go to Product page](#)

3 Images

Overview

Quantity:	100 µL
Target:	CD236/GYPC (GYPC)
Binding Specificity:	AA 1-128
Reactivity:	Human
Host:	Rabbit
Clonality:	Polyclonal
Conjugate:	This CD236/GYPC antibody is un-conjugated
Application:	Western Blotting (WB)

Product Details

Immunogen:	Recombinant fusion protein containing a sequence corresponding to amino acids 1-128 of human Glycophorin C (Glycophorin C (GYPC)) (NP_002092.1).
Sequence:	MWSTRSPNST AWPLSLEPDP GMASASTTMH TTTIAEPDPG MSGWPDGRME TSTPTIMDIV VIAGVIAAVA IVLVSLLFVM LRYMYRHKGT YHTNEAKGTE FAESADAALQ GDPALQDAGD SSRKEYFI
Isotype:	IgG
Cross-Reactivity:	Human, Mouse
Characteristics:	Polyclonal Antibodies
Purification:	Affinity purification

Target Details

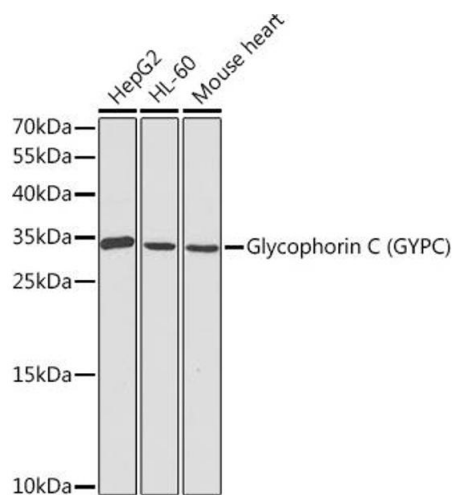
Target:	CD236/GYPC (GYPC)
Alternative Name:	GYPC (GYPC Products)
Target Type:	Viral Protein
Background:	<p>Glycophorin C (GYPC) is an integral membrane glycoprotein. It is a minor species carried by human erythrocytes, but plays an important role in regulating the mechanical stability of red cells. A number of glycophorin C mutations have been described. The Gerbich and Yus phenotypes are due to deletion of exon 3 and 2, respectively. The Webb and Duch antigens, also known as glycophorin D, result from single point mutations of the glycophorin C gene. The glycophorin C protein has very little homology with glycophorins A and B. Alternate splicing results in multiple transcript variants.,GYPC,CD236,CD236R,GE,GE:GPC:GPD:GYPD,GPC,GPD,GYPD,PAS-2,PAS-2,Immunology & Inflammation,CD markers,Cardiovascular,Blood,Blood Cell Antigens,GYPC</p>
Molecular Weight:	11 kDa/13 kDa
Gene ID:	2995
UniProt:	P04921

Application Details

Application Notes:	WB,1:500 - 1:2000
Restrictions:	For Research Use only

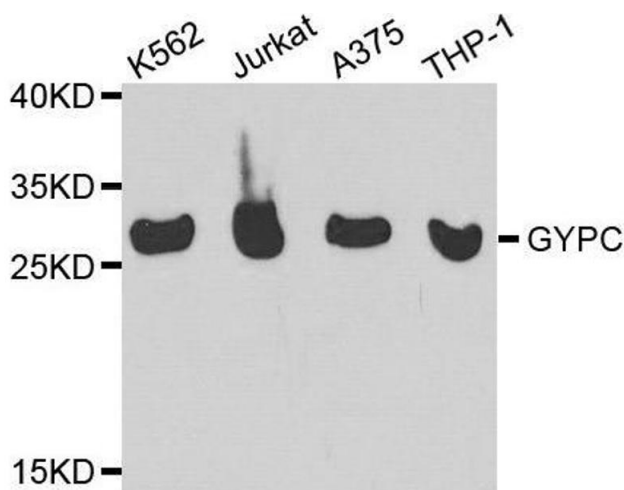
Handling

Format:	Liquid
Buffer:	PBS with 0.02 % sodium azide,50 % glycerol, pH 7.3.
Preservative:	Sodium azide
Precaution of Use:	This product contains Sodium azide: a POISONOUS AND HAZARDOUS SUBSTANCE which should be handled by trained staff only.
Handling Advice:	Avoid freeze / thaw cycles
Storage:	-20 °C
Storage Comment:	Store at -20°C. Avoid freeze / thaw cycles.



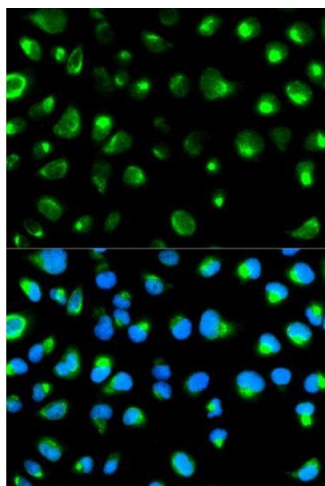
Western Blotting

Image 1. Western blot analysis of extracts of various cell lines, using Glycophorin C (Glycophorin C (GYPC)) antibody (ABIN3021795, ABIN3021796, ABIN3021797 and ABIN6215928) at 1:1000 dilution. Secondary antibody: HRP Goat Anti-Rabbit IgG (H+L) (ABIN1684268 and ABIN3020597) at 1:10000 dilution. Lysates/proteins: 25 µg per lane. Blocking buffer: 3 % nonfat dry milk in TBST. Detection: ECL Basic Kit (RM00020). Exposure time: 90s.



Western Blotting

Image 2. Western blot analysis of extracts of various cell lines, using GYPC antibody.



Immunofluorescence

Image 3. Immunofluorescence analysis of MCF7 cell using GYPC antibody. Blue: DAPI for nuclear staining.