

Datasheet for ABIN3021832

**anti-NRF2 antibody (AA 366-605)**

7 Images

2 Publications

[Go to Product page](#)

## Overview

Quantity:	100 µL
Target:	NRF2 (NFE2L2)
Binding Specificity:	AA 366-605
Reactivity:	Human
Host:	Rabbit
Clonality:	Polyclonal
Conjugate:	This NRF2 antibody is un-conjugated
Application:	Western Blotting (WB), Immunohistochemistry (IHC), Immunofluorescence (IF), Immunoprecipitation (IP)

## Product Details

Immunogen:	Recombinant fusion protein containing a sequence corresponding to amino acids 366-605 of human NRF2 (NP_006155.2).
Sequence:	YGDTLLGLSD SEVEELDSAP GSVKQNGPKT PVHSSGDMVQ PLSPSQGQST HVHDAQCENT PEKELPVSPG HRKTPFTKDK HSSRLEAHLT RDELRAKALH IPFPVEKIIN LPVVDFNEMM SKEQFNEAQL ALIRDIRRRG KNKVAAQNCR KRKLENIVEL EQDL DHLKDE KEKLLKEKGE NDKSLHLLKK QLSTLYLEV F SMLRDEDGKP YSPSEYSLQQ TRDGNVFLVP KSKKPDVKKN
Isotype:	IgG
Cross-Reactivity:	Human, Mouse, Rat
Characteristics:	Polyclonal Antibodies

## Target Details

---

Target:	NRF2 (NFE2L2)
Alternative Name:	NFE2L2 ( <a href="#">NFE2L2 Products</a> )
Background:	<p>This gene encodes a transcription factor which is a member of a small family of basic leucine zipper (bZIP) proteins. The encoded transcription factor regulates genes which contain antioxidant response elements (ARE) in their promoters, many of these genes encode proteins involved in response to injury and inflammation which includes the production of free radicals. Multiple transcript variants encoding different isoforms have been characterized for this gene.,NFE2L2,HEBP1,NRF2,Epigenetics &amp; Nuclear Signaling,Transcription Factors,Cell Biology &amp; Developmental Biology,Endocrine &amp; Metabolism,Mitochondrial metabolism,Mitochondrial Biogenesis,Nucleotide metabolism,Molecular processes,Cardiovascular,Heart,Cardiac metabolism,NFE2L2</p>
Molecular Weight:	65 kDa/66 kDa/67 kDa
Gene ID:	4780
UniProt:	<a href="#">Q16236</a>
Pathways:	<a href="#">ER-Nucleus Signaling</a> , <a href="#">Negative Regulation of intrinsic apoptotic Signaling</a>

## Application Details

---

Application Notes:	WB,1:500 - 1:2000,IHC,1:50 - 1:200,IF,1:50 - 1:200,IP,1:50 - 1:200
Restrictions:	For Research Use only

## Handling

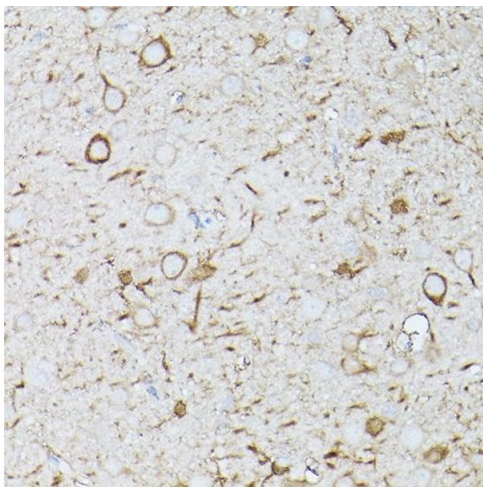
---

Format:	Liquid
Buffer:	PBS with 0.02 % sodium azide,50 % glycerol, pH 7.3.
Preservative:	Sodium azide
Precaution of Use:	This product contains Sodium azide: a POISONOUS AND HAZARDOUS SUBSTANCE which should be handled by trained staff only.
Handling Advice:	Avoid freeze / thaw cycles
Storage:	-20 °C
Storage Comment:	Store at -20°C. Avoid freeze / thaw cycles.

Product cited in: Cheng, Zhu, Han, Zhang, Cui, Shen, Zhang, Yan, Prochownik, Li: "MicroRNA-148a deficiency promotes hepatic lipid metabolism and hepatocarcinogenesis in mice." in: **Cell death & disease**, Vol. 8, Issue 7, pp. e2916, (2018) ([PubMed](#)).

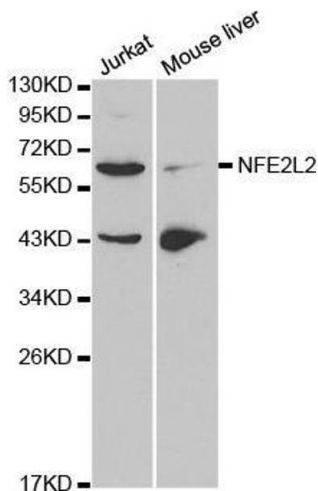
Li, Xia, Xiong, Wang, Yan: "Effects of sepsis on the metabolism of sphingomyelin and cholesterol in mice with liver dysfunction." in: **Experimental and therapeutic medicine**, Vol. 14, Issue 6, pp. 5635-5640, (2017) ([PubMed](#)).

## Images



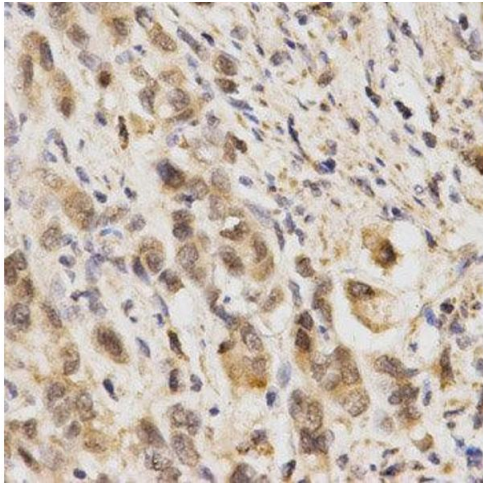
### Immunohistochemistry

**Image 1.** Immunohistochemistry of paraffin-embedded human colon carcinoma using NRF2 Rabbit pAb (ABIN3021831, ABIN3021832, ABIN3021833, ABIN1513258 and ABIN6216065) at dilution of 1:25 (40x lens). Perform high pressure antigen retrieval with 10 mM citrate buffer pH 6.0 before commencing with IHC staining protocol.



### Western Blotting

**Image 2.** Western blot analysis of extracts of various cell lines, using NFE2L2 antibody.



### Immunohistochemistry

**Image 3.** Immunohistochemistry of paraffin-embedded human stomach cancer using NFE2L2 antibody at dilution of 1:200 (x400 lens)

Please check the [product details page](#) for more images. Overall 7 images are available for ABIN3021832.