

Datasheet for ABIN3021950

## anti-Fibrinogen beta Chain antibody (AA 202-491)



[Go to Product page](#)

### 3 Images

#### Overview

Quantity:	100 µL
Target:	Fibrinogen beta Chain (FGB)
Binding Specificity:	AA 202-491
Reactivity:	Human
Host:	Rabbit
Clonality:	Polyclonal
Conjugate:	This Fibrinogen beta Chain antibody is un-conjugated
Application:	Western Blotting (WB)

#### Product Details

Immunogen:	Recombinant fusion protein containing a sequence corresponding to amino acids 202-491 of human FGB (NP_005132.2).
Sequence:	LENLRSKIQK LESDVSAQME YCRTPTVSC NIPVMSGKEC EEIRKGGET SEMYLIQPDS SVKPYRVYCD MNTENGGWTV IQNRQDGSVD FGRKWDYPYKQ GFGNVATNTD GKNYCGLPGE YWLGNDKISQ LTRMGPTTELL IEMEDWKGDK VKAHYGGFTV QNEANKYQIS VNKYRGTAGN ALMDGASQLM GENRTMTIHN GMFFSTYDRD NDGWLTS DPR KQCSKEDGGG WWYNRCHAAN PNGRYWGGQ YTWDMAKHGT DDGVVWMNWK GSWYSMRKMS MKIRPFFPQQ
Isotype:	IgG
Cross-Reactivity:	Human, Mouse, Rat
Characteristics:	Polyclonal Antibodies
Purification:	Affinity purification

## Target Details

---

Target:	Fibrinogen beta Chain (FGB)
Alternative Name:	FGB ( <a href="#">FGB Products</a> )
Background:	<p>The protein encoded by this gene is the beta component of fibrinogen, a blood-borne glycoprotein comprised of three pairs of nonidentical polypeptide chains. Following vascular injury, fibrinogen is cleaved by thrombin to form fibrin which is the most abundant component of blood clots. In addition, various cleavage products of fibrinogen and fibrin regulate cell adhesion and spreading, display vasoconstrictor and chemotactic activities, and are mitogens for several cell types. Mutations in this gene lead to several disorders, including afibrinogenemia, dysfibrinogenemia, hypodysfibrinogenemia and thrombotic tendency. Alternatively spliced transcript variants encoding different isoforms have been found for this gene.,FGB,HEL-S-78p,Cardiovascular,Blood,Coagulation,FGB</p>
Molecular Weight:	55 kDa
Gene ID:	2244
UniProt:	<a href="#">P02675</a>

## Application Details

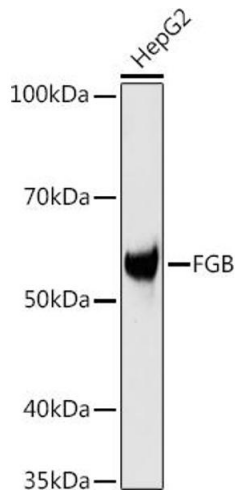
---

Application Notes:	WB,1:500 - 1:2000
Restrictions:	For Research Use only

## Handling

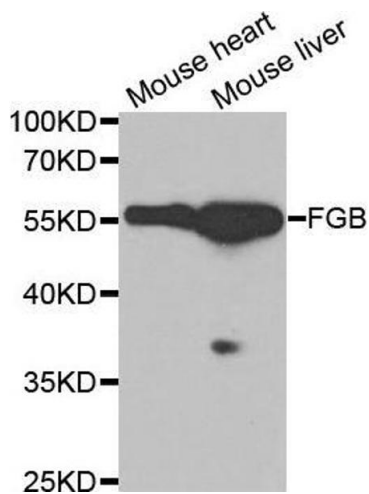
---

Format:	Liquid
Buffer:	PBS with 0.02 % sodium azide,50 % glycerol, pH 7.3.
Preservative:	Sodium azide
Precaution of Use:	This product contains Sodium azide: a POISONOUS AND HAZARDOUS SUBSTANCE which should be handled by trained staff only.
Handling Advice:	Avoid freeze / thaw cycles
Storage:	-20 °C
Storage Comment:	Store at -20°C. Avoid freeze / thaw cycles.



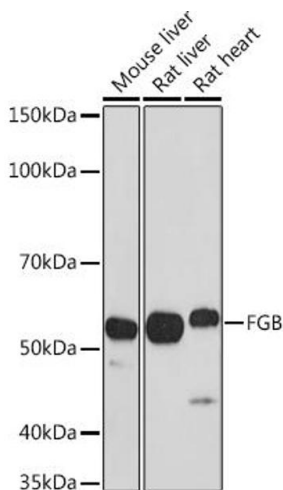
### Western Blotting

**Image 1.** Western blot analysis of extracts of HepG2 cells, using FGB antibody (ABIN3021949, ABIN3021950, ABIN3021951 and ABIN6218213) at 1:1000 dilution. Secondary antibody: HRP Goat Anti-Rabbit IgG (H+L) (ABIN1684268 and ABIN3020597) at 1:10000 dilution. Lysates/proteins: 25 µg per lane. Blocking buffer: 3 % nonfat dry milk in TBST. Detection: ECL Basic Kit (RM00020). Exposure time: 10s.



### Western Blotting

**Image 2.** Western blot analysis of extracts of various tissues, using FGB antibody.



### Western Blotting

**Image 3.** Western blot analysis of extracts of various cell lines, using FGB antibody (ABIN3021949, ABIN3021950, ABIN3021951 and ABIN6218213) at 1:1000 dilution. Secondary antibody: HRP Goat Anti-Rabbit IgG (H+L) (ABIN1684268 and ABIN3020597) at 1:10000 dilution. Lysates/proteins: 25 µg per lane. Blocking buffer: 3 % nonfat dry milk in TBST. Detection: ECL Basic Kit (RM00020). Exposure time: 10s.