

Datasheet for ABIN3022015
anti-TLR8 antibody (AA 849-1041)

8 Images

[Go to Product page](#)

Overview

Quantity:	100 µL
Target:	TLR8
Binding Specificity:	AA 849-1041
Reactivity:	Human
Host:	Rabbit
Clonality:	Polyclonal
Conjugate:	This TLR8 antibody is un-conjugated
Application:	Western Blotting (WB), Immunohistochemistry (IHC), Immunofluorescence (IF)

Product Details

Immunogen:	Recombinant fusion protein containing a sequence corresponding to amino acids 849-1041 of human TLR8 (NP_619542.1).
Sequence:	HHLFYWDVWF IYNVCLAKVK GYRSLSTSQT FYDAYISYDT KDASVTDWVI NELRYHLEES RDKNVLLCLE ERDWDPLGLAI IDNLMQSINQ SKKTVFVLTK KYAKSWNFKT AFYLALQRLM DENMDVIFI LLEPVLQHSQ YLRLRQRICK SSILQWPDNP KAEGFWQTL RNVLTENDS RYNNMYVDSI KQY
Isotype:	IgG
Cross-Reactivity:	Human, Mouse, Rat
Characteristics:	Polyclonal Antibodies

Target Details

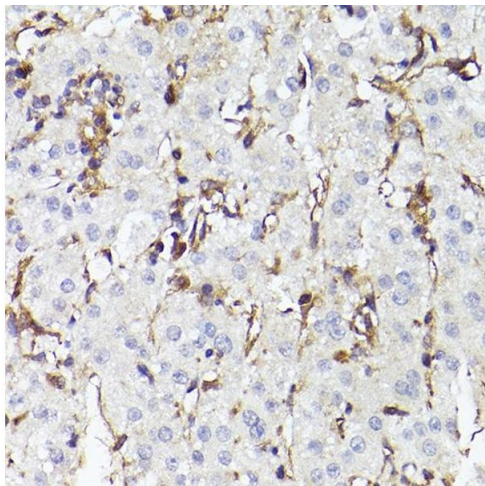
Target:	TLR8
Alternative Name:	TLR8 (TLR8 Products)
Background:	<p>The protein encoded by this gene is a member of the Toll-like receptor (TLR) family which plays a fundamental role in pathogen recognition and activation of innate immunity. TLRs are highly conserved from Drosophila to humans and share structural and functional similarities. They recognize pathogen-associated molecular patterns (PAMPs) that are expressed on infectious agents, and mediate the production of cytokines necessary for the development of effective immunity. The various TLRs exhibit different patterns of expression. This gene is predominantly expressed in lung and peripheral blood leukocytes, and lies in close proximity to another family member, TLR7, on chromosome X.,TLR8,CD288,TLR8,Immunology & Inflammation,CD markers,NF-kB Signaling Pathway,Toll-like Receptor Signaling Pathway,Cell Intrinsic Innate Immunity Signaling Pathway,TLR Signaling,TLR8</p>
Molecular Weight:	119 kDa/121 kDa
Gene ID:	51311
UniProt:	Q9NR97
Pathways:	TLR Signaling , Activation of Innate immune Response , Toll-Like Receptors Cascades

Application Details

Application Notes:	WB,1:500 - 1:2000,IHC,1:50 - 1:200,IF,1:50 - 1:200
Restrictions:	For Research Use only

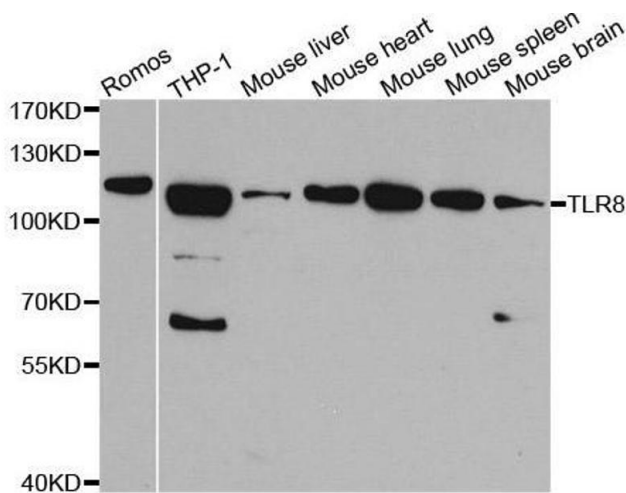
Handling

Format:	Liquid
Buffer:	PBS with 0.02 % sodium azide,50 % glycerol, pH 7.3.
Preservative:	Sodium azide
Precaution of Use:	This product contains Sodium azide: a POISONOUS AND HAZARDOUS SUBSTANCE which should be handled by trained staff only.
Handling Advice:	Avoid freeze / thaw cycles
Storage:	-20 °C
Storage Comment:	Store at -20°C. Avoid freeze / thaw cycles.



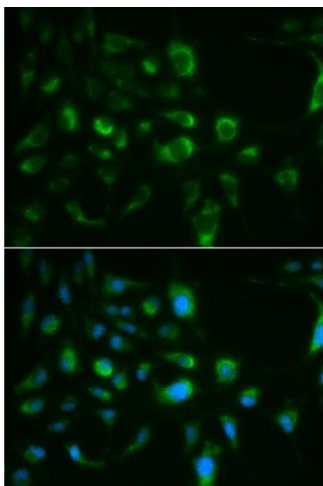
Immunohistochemistry

Image 1. Immunohistochemistry of paraffin-embedded human liver cancer using TLR8 Rabbit pAb (ABIN3022014, ABIN3022015, ABIN3022016, ABIN1513616 and ABIN6218568) at dilution of 1:150 (40x lens). Perform high pressure antigen retrieval with 10 mM citrate buffer pH 6.0 before commencing with IHC staining protocol.



Western Blotting

Image 2. Western blot analysis of extracts of various cell lines, using TLR8 antibody.



Immunofluorescence

Image 3. Immunofluorescence analysis of MCF7 cell using TLR8 antibody. Blue: DAPI for nuclear staining.

Please check the [product details page](#) for more images. Overall 8 images are available for ABIN3022015.