

Datasheet for ABIN3022048
anti-CES2 antibody (AA 310-410)



[Go to Product page](#)

3 Images

Overview

Quantity:	100 µL
Target:	CES2
Binding Specificity:	AA 310-410
Reactivity:	Human
Host:	Rabbit
Clonality:	Polyclonal
Conjugate:	This CES2 antibody is un-conjugated
Application:	Western Blotting (WB), Immunofluorescence (IF)

Product Details

Immunogen:	A synthetic peptide corresponding to a sequence within amino acids 310-410 of human CES2 (NP_003860.3).
Sequence:	IPGVVDGVFL PRHPQELLAS ADFQPVPSIV GVNNNEFGWL IPKVMRIYDT QKEMDREASQ AALQKMLTLL MLPPTFGDLL REEYIGDNGD PQLQAQFQE M
Isotype:	IgG
Cross-Reactivity:	Human, Mouse
Characteristics:	Polyclonal Antibodies
Purification:	Affinity purification

Target Details

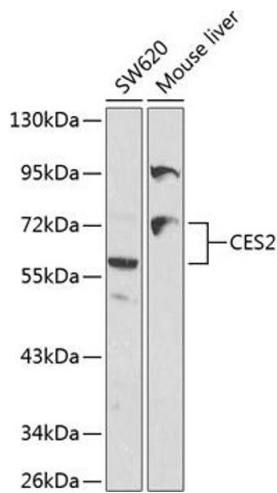
Target:	CES2
Alternative Name:	CES2 (CES2 Products)
Background:	This gene encodes a member of the carboxylesterase large family. The family members are responsible for the hydrolysis or transesterification of various xenobiotics, such as cocaine and heroin, and endogenous substrates with ester, thioester, or amide bonds. They may participate in fatty acyl and cholesterol ester metabolism, and may play a role in the blood-brain barrier system. The protein encoded by this gene is the major intestinal enzyme and functions in intestine drug clearance. Alternatively spliced transcript variants have been found for this gene.,CES2,CE-2,CES2A1,PCE-2,iCE,Signal Transduction,Endocrine & Metabolism,Lipid Metabolism,Drug metabolism,CES2
Molecular Weight:	59 kDa/61 kDa
Gene ID:	8824
UniProt:	O00748

Application Details

Application Notes:	WB,1:500 - 1:2000,IF,1:50 - 1:200
Restrictions:	For Research Use only

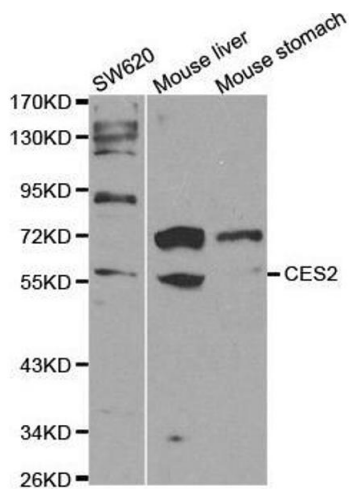
Handling

Format:	Liquid
Buffer:	PBS with 0.02 % sodium azide,50 % glycerol, pH 7.3.
Preservative:	Sodium azide
Precaution of Use:	This product contains Sodium azide: a POISONOUS AND HAZARDOUS SUBSTANCE which should be handled by trained staff only.
Handling Advice:	Avoid freeze / thaw cycles
Storage:	-20 °C
Storage Comment:	Store at -20°C. Avoid freeze / thaw cycles.



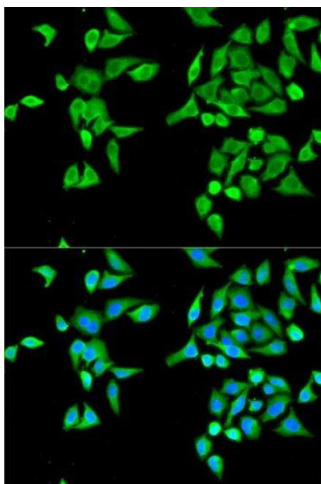
Western Blotting

Image 1. Western blot analysis of extracts of various cell lines, using CES2 antibody (ABIN3022047, ABIN3022048, ABIN3022049 and ABIN6218583) at 1:1000 dilution. Secondary antibody: HRP Goat Anti-Rabbit IgG (H+L) (ABIN1684268 and ABIN3020597) at 1:10000 dilution. Lysates/proteins: 25 µg per lane. Blocking buffer: 3 % nonfat dry milk in TBST.



Western Blotting

Image 2. Western blot analysis of extracts of various cell lines, using CES2 antibody.



Immunofluorescence

Image 3. Immunofluorescence analysis of MCF-7 cell using CES2 antibody. Blue: DAPI for nuclear staining.