

Datasheet for ABIN3022063
anti-PICK1 antibody (AA 260-360)[Go to Product page](#)

2 Images

Overview

Quantity:	100 µL
Target:	PICK1
Binding Specificity:	AA 260-360
Reactivity:	Human
Host:	Rabbit
Clonality:	Polyclonal
Conjugate:	This PICK1 antibody is un-conjugated
Application:	Western Blotting (WB)

Product Details

Immunogen:	A synthetic peptide corresponding to a sequence within amino acids 260-360 of human PICK1 (NP_036539.1).
Sequence:	YLSYCLKVKE MDDEEYSCIA LGEPLYRVST GNYEYRLILR CRQEARARFS QMRKDVLEKM ELLDQKHVQD IVFQLQRLVS TMSKYYNDCY AVLRDADVFP I
Isotype:	IgG
Cross-Reactivity:	Human
Characteristics:	Polyclonal Antibodies

Target Details

Target:	PICK1
---------	-------

Target Details

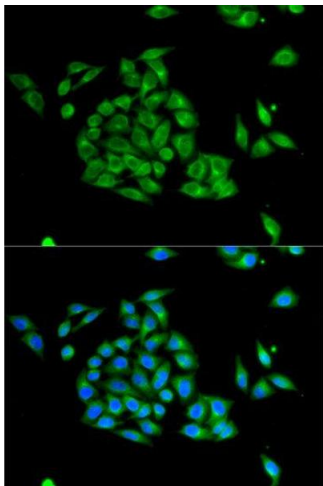
Alternative Name:	PICK1 (PICK1 Products)
Background:	<p>The protein encoded by this gene contains a PDZ domain, through which it interacts with protein kinase C, alpha (PRKCA). This protein may function as an adaptor that binds to and organizes the subcellular localization of a variety of membrane proteins. It has been shown to interact with multiple glutamate receptor subtypes, monoamine plasma membrane transporters, as well as non-voltage gated sodium channels, and may target PRKCA to these membrane proteins and thus regulate their distribution and function. This protein has also been found to act as an anchoring protein that specifically targets PRKCA to mitochondria in a ligand-specific manner. Three transcript variants encoding the same protein have been found for this gene.,PICK1,PICK,PRKCABP,Signal Transduction,Kinase,Tyrosine kinases,Neuroscience,PICK1</p>
Molecular Weight:	39 kDa/46 kDa
Gene ID:	9463
UniProt:	Q9NRD5

Application Details

Application Notes:	WB,1:500 - 1:2000
Restrictions:	For Research Use only

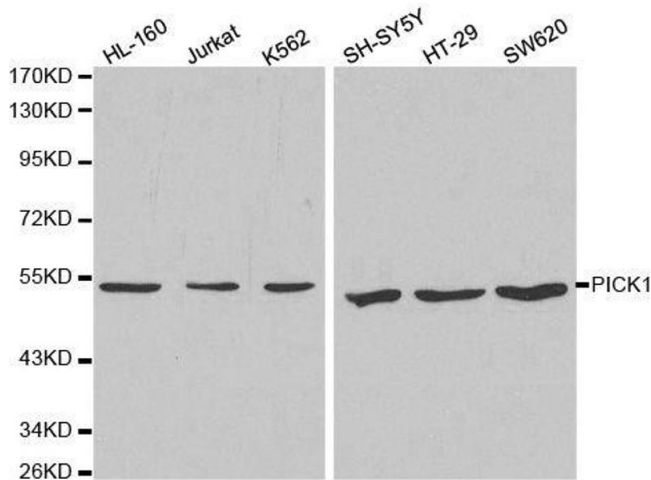
Handling

Format:	Liquid
Buffer:	PBS with 0.02 % sodium azide,50 % glycerol, pH 7.3.
Preservative:	Sodium azide
Precaution of Use:	This product contains Sodium azide: a POISONOUS AND HAZARDOUS SUBSTANCE which should be handled by trained staff only.
Handling Advice:	Avoid freeze / thaw cycles
Storage:	-20 °C
Storage Comment:	Store at -20°C. Avoid freeze / thaw cycles.



Immunofluorescence

Image 1. Immunofluorescence analysis of HeLa cell using PICK1 antibody. Blue: DAPI for nuclear staining.



Western Blotting

Image 2. Western blot analysis of extracts of various cell lines, using PICK1 antibody.