



Datasheet for ABIN3022069
anti-RENT1/UPF1 antibody (AA 270-370)



[Go to Product page](#)

5 Images

Overview

Quantity:	100 µL
Target:	RENT1/UPF1 (UPF1)
Binding Specificity:	AA 270-370
Reactivity:	Human
Host:	Rabbit
Clonality:	Polyclonal
Conjugate:	This RENT1/UPF1 antibody is un-conjugated
Application:	Western Blotting (WB), Immunofluorescence (IF), Immunoprecipitation (IP)

Product Details

Immunogen:	A synthetic peptide corresponding to a sequence within amino acids 270-370 of human UPF1/RENT1 (NP_002902.2).
Sequence:	KENPSATLED LEKPGVDEEP QHVLLRYEDA YQQNIFGPL VKLEADYDKK LKESQTQDNI TVRWDLGLNK KRIAYFTLPK TDSMRLMQG DEICLRYKGD L
Isotype:	IgG
Cross-Reactivity:	Human, Mouse, Rat
Characteristics:	Polyclonal Antibodies

Target Details

Target:	RENT1/UPF1 (UPF1)
---------	-------------------

Target Details

Alternative Name: [UPF1 \(UPF1 Products\)](#)

Background: This gene encodes a protein that is part of a post-splicing multiprotein complex involved in both mRNA nuclear export and mRNA surveillance. mRNA surveillance detects exported mRNAs with truncated open reading frames and initiates nonsense-mediated mRNA decay (NMD). When translation ends upstream from the last exon-exon junction, this triggers NMD to degrade mRNAs containing premature stop codons. This protein is located only in the cytoplasm. When translation ends, it interacts with the protein that is a functional homolog of yeast Upf2p to trigger mRNA decapping. Use of multiple polyadenylation sites has been noted for this gene. Alternative splicing results in multiple transcript variants.,UPF1,HUPF1,NORF1,RENT1,pNORF1,smg-2,Epigenetics & Nuclear Signaling,RNA Binding,Cell Biology & Developmental Biology,Apoptosis,UPF1

Molecular Weight: 123 kDa/124 kDa

Gene ID: 5976

UniProt: [Q92900](#)

Pathways: [SARS-CoV-2 Protein Interactome](#)

Application Details

Application Notes: WB,1:500 - 1:2000,IF,1:50 - 1:200,IP,1:50 - 1:200

Restrictions: For Research Use only

Handling

Format: Liquid

Buffer: PBS with 0.02 % sodium azide,50 % glycerol, pH 7.3.

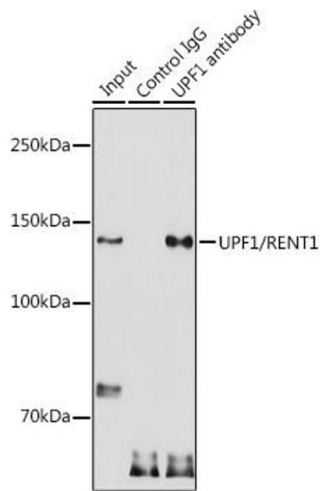
Preservative: Sodium azide

Precaution of Use: This product contains Sodium azide: a POISONOUS AND HAZARDOUS SUBSTANCE which should be handled by trained staff only.

Handling Advice: Avoid freeze / thaw cycles

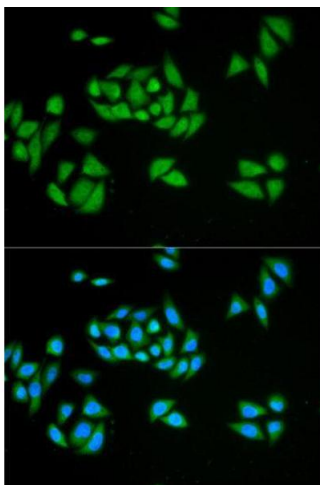
Storage: -20 °C

Storage Comment: Store at -20°C. Avoid freeze / thaw cycles.



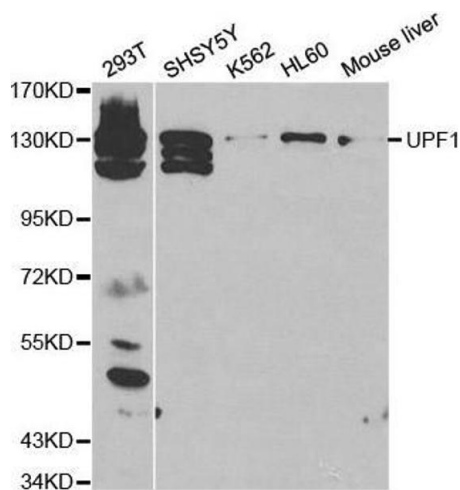
Immunoprecipitation

Image 1. Immunoprecipitation analysis of 300 µg extracts of HeLa cells using 3 µg UPF1/RENT1 antibody (ABIN3022068, ABIN3022069, ABIN3022070 and ABIN6218593). Western blot was performed from the immunoprecipitate using UPF1/RENT1 antibody (ABIN3022068, ABIN3022069, ABIN3022070 and ABIN6218593) at a dilution of 1:1000.



Immunofluorescence

Image 2. Immunofluorescence analysis of HeLa cell using UPF1 antibody. Blue: DAPI for nuclear staining.



Western Blotting

Image 3. Western blot analysis of extracts of various cell lines, using UPF1 antibody.

Please check the [product details page](#) for more images. Overall 5 images are available for ABIN3022069.