

Datasheet for ABIN302213  
**anti-CPI-17 antibody (N-Term)**[Go to Product page](#)

## 2 Images

## Overview

Quantity:	0.1 mL
Target:	CPI-17 (PPP1R14A)
Binding Specificity:	AA 1-147, N-Term
Reactivity:	Human
Host:	Mouse
Clonality:	Monoclonal
Conjugate:	This CPI-17 antibody is un-conjugated
Application:	Western Blotting (WB), Enzyme Immunoassay (EIA)

## Product Details

Immunogen:	Recombinant human PPP1R14A (1-147aa) purified from E. coli
Clone:	4H10
Isotype:	IgG2a
Specificity:	This antibody detects PPP1R14A.
Characteristics:	Synonyms: Protein phosphatase 1 regulatory subunit 14A, CPI-17, CPI17, PPP1INL, 17 kDaPKC-potentiated inhibitory protein of PP1
Purification:	Protein-G affinity chromatography

## Target Details

Target:	CPI-17 (PPP1R14A)
---------	-------------------

## Target Details

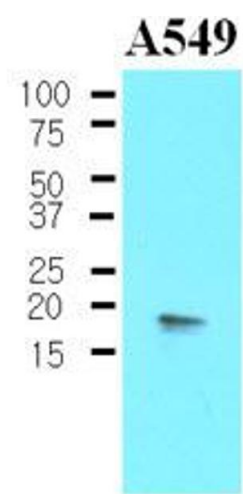
Alternative Name:	PPP1R14A ( <a href="#">PPP1R14A Products</a> )
Background:	PPP1R14A (Protein phosphatase 1 regulatory subunit 14A) is a phosphorylation-dependent inhibitory protein for smooth muscle myosin phosphate. Myosin phosphatase can reverse MYL (myosin light chain) phosphorylation to induce a state of relaxation. However, during agonist-induced contraction at constant Ca <sup>2+</sup> concurrent inhibition of myosin phosphatase leads to increases in MYL phosphorylation and tension. These calcium-independent increases in myosin phosphorylation and tension are termed calcium sensitization. Synonyms: 17 kDa PKC-potentiated inhibitory protein of PP1, CPI-17, CPI17, PPP1INL, Protein phosphatase 1 regulatory subunit 14A
Gene ID:	94274
UniProt:	<a href="#">Q96A00</a>

## Application Details

Application Notes:	ELISA. Western blot: 1: 250 approx. 1: 1000 (1: 500 as startin dilution). Other applications not tested. Optimal dilutions are dependent on conditions and should be determined by the user.
Restrictions:	For Research Use only

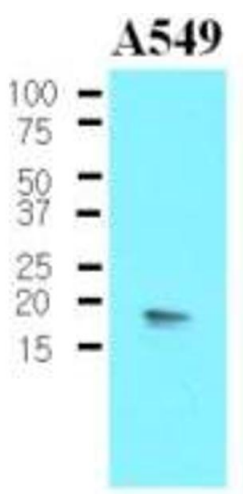
## Handling

Format:	Liquid
Concentration:	1.0 mg/mL
Buffer:	Phosphate-Buffered Saline ( pH 7.4) with 0.09 % Sodium Azide
Preservative:	Sodium azide
Precaution of Use:	This product contains sodium azide: a POISONOUS AND HAZARDOUS SUBSTANCE which should be handled by trained staff only.
Storage:	4 °C/-20 °C
Storage Comment:	Store the antibody at 2 - 8 °C up to one month or (in aliquots) at -20 °C for longer. Avoid repeated freezing and thawing. Shelf life: one year from despatch.
Expiry Date:	12 months



Western Blotting

Image 1.



Western Blotting

Image 2.