



[Go to Product page](#)

Datasheet for ABIN3022144
anti-BMP4 antibody (AA 30-300)

2 Images

Overview

Quantity:	100 µL
Target:	BMP4
Binding Specificity:	AA 30-300
Reactivity:	Human
Host:	Rabbit
Clonality:	Polyclonal
Conjugate:	This BMP4 antibody is un-conjugated
Application:	Western Blotting (WB), Immunofluorescence (IF)

Product Details

Immunogen:	Recombinant fusion protein containing a sequence corresponding to amino acids 30-300 of human BMP4 (NP_570912.2).
Sequence:	TGKKKVAEIQ GHAGGRRSGQ SHELLRDFEA TLLQMFGGLRR RPQPSKSAVI PDYMRDLRYRL QSGEEEEEQI HSTGLEYPER PASRANTVRS FHHEEHLENI PGTSENSAFR FLNLSIPE NEVISSAELR LFREQVDQGP DWERGFHRIN IYEVMPKPPAE VVPGHLITRL LDTRLVHHNV TRWETFVDVSP AVLRWTREKQ PNYGLAIEVT HLHQTRTHQG QHVRISRSLP QGSGNWAQLR PLLVTFGHDG RGHALTRRRR AKRSPKHHSQ R
Isotype:	IgG
Cross-Reactivity:	Human, Mouse, Rat
Characteristics:	Polyclonal Antibodies
Purification:	Affinity purification

Target Details

Target:	BMP4
Alternative Name:	BMP4 (BMP4 Products)
Background:	<p>This gene encodes a secreted ligand of the TGF-beta (transforming growth factor-beta) superfamily of proteins. Ligands of this family bind various TGF-beta receptors leading to recruitment and activation of SMAD family transcription factors that regulate gene expression. The encoded preproprotein is proteolytically processed to generate each subunit of the disulfide-linked homodimer. This protein regulates heart development and adipogenesis. Mutations in this gene are associated with orofacial cleft and microphthalmia in human patients. The encoded protein may also be involved in the pathology of multiple cardiovascular diseases and human cancers.,BMP4,BMP2B,BMP2B1,MCOPS6,OFC11,ZYME,Cancer,Signal Transduction,Cell Biology & Developmental Biology,Growth factor,TGF-b-Smad Signaling Pathway,Wnt/β-Catenin Signaling Pathway,ESC Pluripotency and Differentiation,Immunology & Inflammation,Cytokines,NF-kB Signaling Pathway,Stem Cells,Cardiovascular,Angiogenesis,Ligand,BMP4</p>
Molecular Weight:	46 kDa
Gene ID:	652
UniProt:	P12644
Pathways:	Steroid Hormone Mediated Signaling Pathway , Regulation of Muscle Cell Differentiation , Tube Formation , Skeletal Muscle Fiber Development

Application Details

Application Notes:	WB,1:500 - 1:2000,IF,1:50 - 1:200
Restrictions:	For Research Use only

Handling

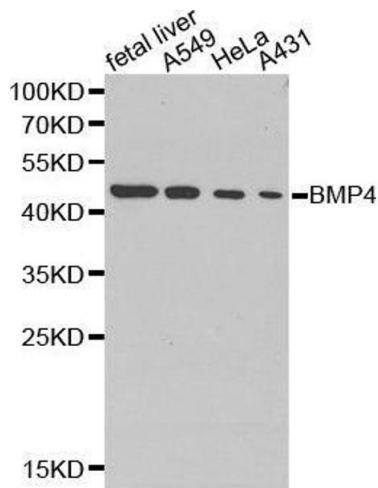
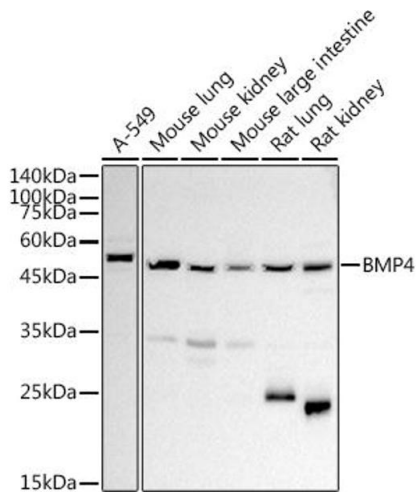
Format:	Liquid
Buffer:	PBS with 0.02 % sodium azide,50 % glycerol, pH 7.3.
Preservative:	Sodium azide
Precaution of Use:	This product contains Sodium azide: a POISONOUS AND HAZARDOUS SUBSTANCE which should be handled by trained staff only.
Handling Advice:	Avoid freeze / thaw cycles

Handling

Storage: -20 °C

Storage Comment: Store at -20°C. Avoid freeze / thaw cycles.

Images



Western Blotting

Image 1. Western blot analysis of extracts of various cell lines, using BMP4 antibody (ABIN3022143, ABIN3022144, ABIN3022145 and ABIN6218628) at 1:1000 dilution. Secondary antibody: HRP Goat Anti-Rabbit IgG (H+L) (ABIN1684268 and ABIN3020597) at 1:10000 dilution. Lysates/proteins: 25 µg per lane. Blocking buffer: 3 % nonfat dry milk in TBST. Detection: ECL Basic Kit (RM00020). Exposure time: 45s.

Western Blotting

Image 2. Western blot analysis of extracts of various cell lines, using BMP4 antibody.