



[Go to Product page](#)

Datasheet for ABIN3022160
anti-Annexin A2 antibody

8 Images

Overview

Quantity:	100 µL
Target:	Annexin A2 (ANXA2)
Reactivity:	Human, Mouse, Rat
Host:	Rabbit
Clonality:	Polyclonal
Conjugate:	This Annexin A2 antibody is un-conjugated
Application:	Western Blotting (WB), Immunohistochemistry (IHC)

Product Details

Immunogen:	Recombinant protein of human ANXA2
Isotype:	IgG
Purification:	Affinity purification

Target Details

Target:	Annexin A2 (ANXA2)
Alternative Name:	ANXA2 (ANXA2 Products)
Background:	Annexin A2 (ANXA2), also known as lipocortin II or calpactin-1 heavy chain, is a 36 kDa member of the annexin superfamily that binds phospholipids and other proteins in a calcium-dependent manner via annexin repeats. Annexin A2 contains four such repeats through which it mediates protein-protein and protein-lipid interactions. It forms a constitutive heterotetramer with S100A10, acting as a bridge between the actin cytoskeleton, plasma membrane, and

Target Details

endocytotic vesicle machinery. Originally identified as a protein inhibitor of phospholipase A2, annexin A2 has subsequently been shown to interact with an array of protein and non-protein partners, including F-actin, spectrin, SNARE complexes, RNA, and virus particles. Annexin A2 has also been shown to have receptor-like activity and is detected on the surface of macrophages and vascular endothelial cells where it mediates macrophage activation and Factor Xa signaling, respectively. Upregulation of annexin A2 at the cell surface is thought to be modulated by phosphorylation at Tyr23 by Src. Interestingly, phosphorylation at Tyr23 has recently been shown to be required for cell surface expression of annexin A2 where it mediates motility, invasiveness, and overall metastatic potential of certain pancreatic cancer cells. Annexin A2 has also been shown to be heavily phosphorylated on serine residues in response to PKC activation via a pleiotropic mechanism. For a complete list of curated phosphorylation sites on annexin A2, please see PhosphoSitePlus® at www.phosphosite.org.
Synonyms: ANX2, ANX2L4, CAL1H, LIP2, LPC2, LPC2D, P36, PAP-IV

Gene ID: 302

UniProt: [P07355](#)

Pathways: [S100 Proteins](#)

Application Details

Application Notes: Recommended dilutions: WB: 1:500-1:2000, IHC: 1:50-1:200

Restrictions: For Research Use only

Handling

Format: Liquid

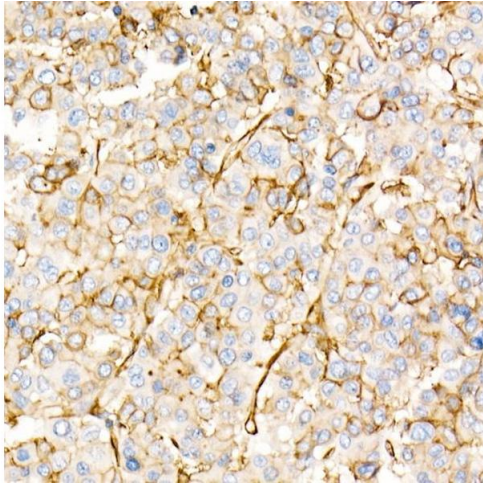
Buffer: PBS with 0.02 % sodium azide, 50 % glycerol, pH 7.3

Preservative: Sodium azide

Precaution of Use: This product contains sodium azide: a POISONOUS AND HAZARDOUS SUBSTANCE which should be handled by trained staff only.

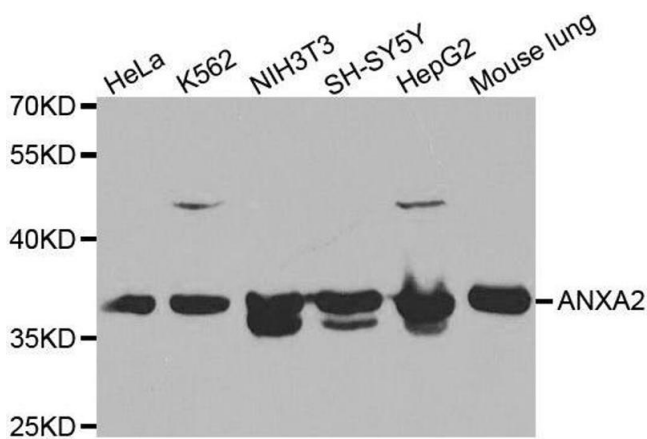
Handling Advice: Avoid freeze / thaw cycles

Storage: -20 °C/-80 °C



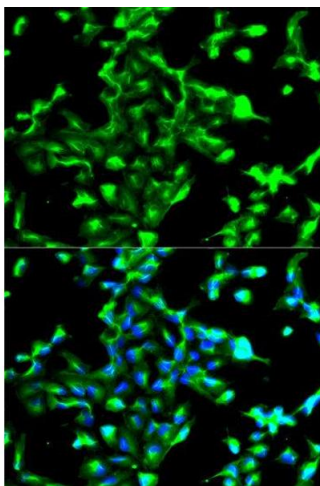
Immunohistochemistry

Image 1. Immunohistochemistry of paraffin-embedded human liver cancer using Annexin Rabbit pAb at dilution of 1:25 (40x lens). Perform high pressure antigen retrieval with 10 mM citrate buffer pH 6.0 before commencing with IHC staining protocol.



Western Blotting

Image 2. Western blot analysis of extracts of various cell lines, using ANXA2 antibody.



Immunofluorescence

Image 3. Immunofluorescence analysis of A549 cell using ANXA2 antibody. Blue: DAPI for nuclear staining.

Please check the [product details page](#) for more images. Overall 8 images are available for ABIN3022160.