

Datasheet for ABIN3022165  
**anti-SERPINC1 antibody (AA 33-185)**



[Go to Product page](#)

3 Images

Overview

Quantity:	100 µL
Target:	SERPINC1
Binding Specificity:	AA 33-185
Reactivity:	Human
Host:	Rabbit
Clonality:	Polyclonal
Conjugate:	This SERPINC1 antibody is un-conjugated
Application:	Western Blotting (WB)

Product Details

Immunogen:	Recombinant fusion protein containing a sequence corresponding to amino acids 33-185 of human SERPINC1 (NP_000479.1).
Sequence:	HGSPVDICTA KPRDIPMNPM CIYRSPEKKA TEDEGSEQKI PEATNRRVWE LSKANSRFAT TFYQHLADSK NDNDNIFLSP LSISTAFAMT KLGACNDTLQ QLMEVFKFDT ISEKTSQIH FFFAKLNCR L YRKANKSSKL V SANRLFGDK SLT
Isotype:	IgG
Cross-Reactivity:	Human, Mouse
Characteristics:	Polyclonal Antibodies

Target Details

Target:	SERPINC1
---------	----------

## Target Details

---

Alternative Name:	SERPINC1 ( <a href="#">SERPINC1 Products</a> )
Background:	<p>The protein encoded by this gene is a plasma protease inhibitor and a member of the serpin superfamily. This protein inhibits thrombin as well as other activated serine proteases of the coagulation system, and it regulates the blood coagulation cascade. The protein includes two functional domains: the heparin binding-domain at the N-terminus of the mature protein, and the reactive site domain at the C-terminus. The inhibitory activity is enhanced by the presence of heparin. More than 120 mutations have been identified for this gene, many of which are known to cause antithrombin-III deficiency.,SERPINC1,AT3,AT3D,ATIII,THPH7,Stem Cells,Cardiovascular,Blood,Coagulation,Serum Proteins,SERPINC1</p>

Molecular Weight:	52 kDa
-------------------	--------

Gene ID:	462
----------	-----

UniProt:	<a href="#">P01008</a>
----------	------------------------

## Application Details

---

Application Notes:	WB,1:500 - 1:2000
--------------------	-------------------

Restrictions:	For Research Use only
---------------	-----------------------

## Handling

---

Format:	Liquid
---------	--------

Buffer:	PBS with 0.02 % sodium azide,50 % glycerol, pH 7.3.
---------	---

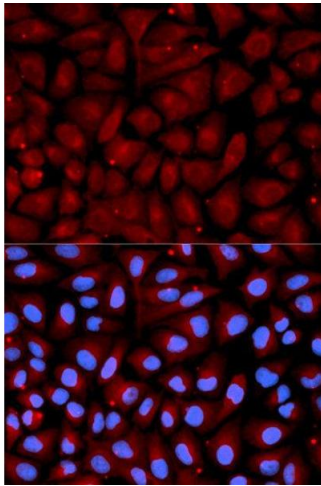
Preservative:	Sodium azide
---------------	--------------

Precaution of Use:	This product contains Sodium azide: a POISONOUS AND HAZARDOUS SUBSTANCE which should be handled by trained staff only.
--------------------	--

Handling Advice:	Avoid freeze / thaw cycles
------------------	----------------------------

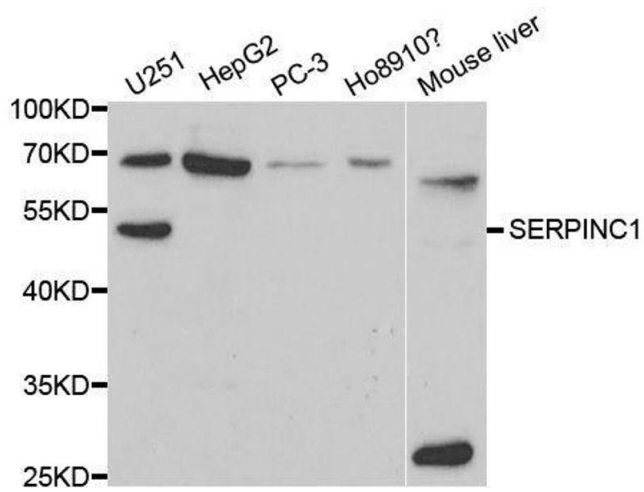
Storage:	-20 °C
----------	--------

Storage Comment:	Store at -20°C. Avoid freeze / thaw cycles.
------------------	---



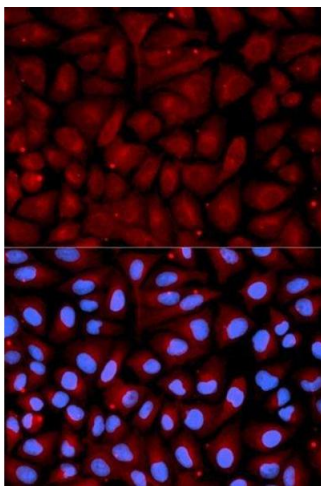
### Immunofluorescence

**Image 1.** Immunofluorescence analysis of U2OS cell using SERPINC1 antibody. Blue: DAPI for nuclear staining.



### Western Blotting

**Image 2.** Western blot analysis of extracts of various cell lines, using SERPINC1 antibody.



### Immunofluorescence

**Image 3.** Immunofluorescence analysis of U2OS cells using SERPINC1 antibody.