



Datasheet for ABIN3022208

## anti-ETS1 antibody

12 Images



[Go to Product page](#)

### Overview

|              |   |
|--------------|---|
| Quantity:    | 100 µL  |
| Target:      | ETS1  |
| Reactivity:  | Human   |
| Host:        | Rabbit  |
| Clonality:   | Polyclonal  |
| Conjugate:   | This ETS1 antibody is un-conjugated               |
| Application: | Western Blotting (WB), Immunohistochemistry (IHC) |

### Product Details

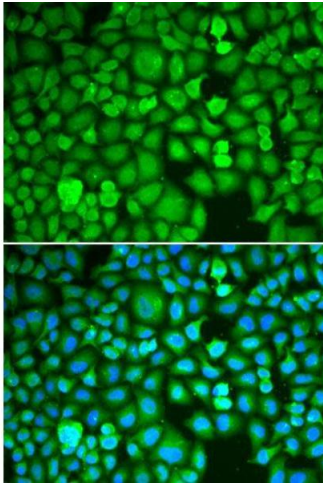
|                   |                              |
|-------------------|------------------------------|
| Immunogen:        | Recombinant Protein          |
| Cross-Reactivity: | Mouse (Murine), Rat (Rattus) |

### Target Details

|                   |  |
|-------------------|--|
| Target:           | ETS1                                   |
| Alternative Name: | ETS1 ( <a href="#">ETS1 Products</a> ) |
| Molecular Weight: | 411 kDa                                |
| Gene ID:          | 2113                                   |
| UniProt:          | <a href="#">P14921</a>                 |

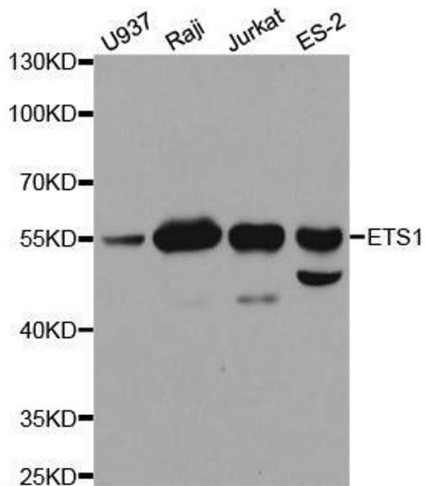
Restrictions: For Research Use only

## Images



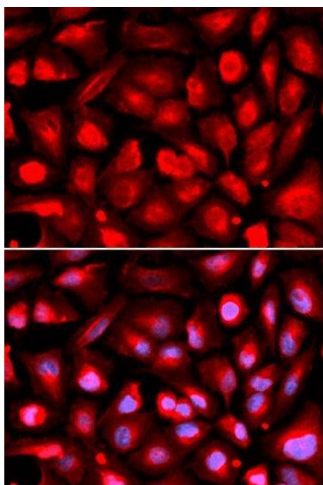
### Immunofluorescence

**Image 1.** Immunofluorescence analysis of A549 cell using ETS1 antibody. Blue: DAPI for nuclear staining.



### Western Blotting

**Image 2.** Western blot analysis of extracts of various cell lines, using ETS1 antibody.



### Immunofluorescence

**Image 3.** Immunofluorescence analysis of U2OS cell using ETS1 antibody. Blue: DAPI for nuclear staining.

Please check the [product details page](#) for more images. Overall 12 images are available for ABIN3022208.