



[Go to Product page](#)

Datasheet for ABIN3022211  
**anti-CHRM1 antibody (C-Term)**

5 Images

Overview

Quantity:	100 µL
Target:	CHRM1
Binding Specificity:	C-Term
Reactivity:	Human
Host:	Rabbit
Clonality:	Polyclonal
Conjugate:	This CHRM1 antibody is un-conjugated
Application:	Western Blotting (WB), Immunohistochemistry (IHC), Immunofluorescence (IF)

Product Details

Immunogen:	A synthetic peptide corresponding to a sequence within amino acids 400 to the C-terminus of human CHRM1 (NP_000729.2).
Sequence:	WELGYWLCYV NSTINPMCYA LCNKAFRDTF RLLLLCRWDK RRWRKIPKRP GSVHRTPSRQ C
Isotype:	IgG
Cross-Reactivity:	Human, Mouse, Rat
Characteristics:	Polyclonal Antibodies
Purification:	Affinity purification

Target Details

Target:	CHRM1
---------	-------

## Target Details

---

Alternative Name: [CHRM1 \(CHRM1 Products\)](#)

---

Background: The muscarinic cholinergic receptors belong to a larger family of G protein-coupled receptors. The functional diversity of these receptors is defined by the binding of acetylcholine and includes cellular responses such as adenylate cyclase inhibition, phosphoinositide degeneration, and potassium channel mediation. Muscarinic receptors influence many effects of acetylcholine in the central and peripheral nervous system. The muscarinic cholinergic receptor 1 is involved in mediation of vagally-induced bronchoconstriction and in the acid secretion of the gastrointestinal tract. The gene encoding this receptor is localized to 11q13,CHRM1,HM1,M1,M1R,Signal Transduction,G protein signaling,G-Protein-Coupled Receptors(GPCR),Neuroscience,Neurodegenerative Diseases,Amyloid Plaque and Neurofibrillary Tangle Formation in Alzheimer's Disease,CHRM1

---

Molecular Weight: 50 kDa/51 kDa

---

Gene ID: 1128

---

UniProt: [P11229](#)

---

Pathways: [Synaptic Membrane](#)

---

## Application Details

---

Application Notes: WB,1:500 - 1:2000,IHC,1:500 - 1:2000,IF,1:50 - 1:200

---

Restrictions: For Research Use only

---

## Handling

---

Format: Liquid

---

Buffer: PBS with 0.02 % sodium azide,50 % glycerol, pH 7.3.

---

Preservative: Sodium azide

---

Precaution of Use: This product contains Sodium azide: a POISONOUS AND HAZARDOUS SUBSTANCE which should be handled by trained staff only.

---

Handling Advice: Avoid freeze / thaw cycles

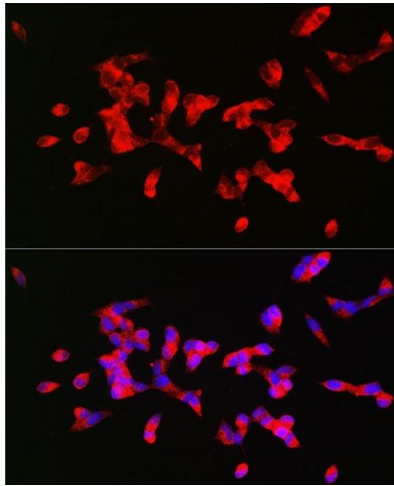
---

Storage: -20 °C

---

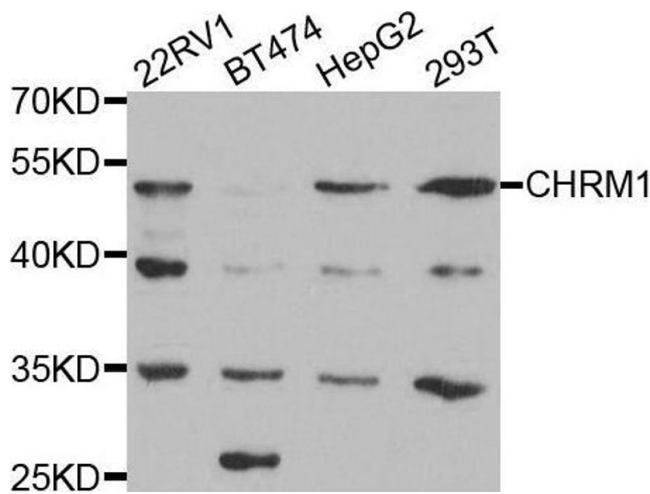
Storage Comment: Store at -20°C. Avoid freeze / thaw cycles.

---



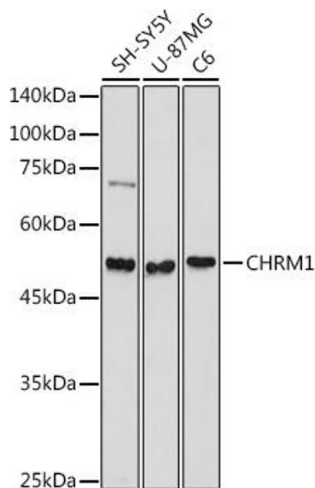
### Immunofluorescence

**Image 1.** Immunofluorescence analysis of SH-SY5Y cells using CHRM1 Rabbit pAb (ABIN3022210, ABIN3022211, ABIN3022212, ABIN1512760 and ABIN6218670) at dilution of 1:200 (40x lens). Blue: DAPI for nuclear staining.



### Western Blotting

**Image 2.** Western blot analysis of extracts of various cell lines, using CHRM1 antibody.



### Western Blotting

**Image 3.** Western blot analysis of extracts of various cell lines, using CHRM1 antibody (ABIN3022210, ABIN3022211, ABIN3022212, ABIN1512760 and ABIN6218670) at 1:1000 dilution. Secondary antibody: HRP Goat Anti-Rabbit IgG (H+L) (ABIN1684268 and ABIN3020597) at 1:10000 dilution. Lysates/proteins: 25 µg per lane. Blocking buffer: 3 % nonfat dry milk in TBST. Detection: ECL Basic Kit (RM00020). Exposure time: 30s.

Please check the [product details page](#) for more images. Overall 5 images are available for ABIN3022211.