

Datasheet for ABIN3022231
anti-ELAVL1 antibody (AA 1-326)



[Go to Product page](#)

31 Images

Overview

Quantity:	100 µL
Target:	ELAVL1
Binding Specificity:	AA 1-326
Reactivity:	Human
Host:	Rabbit
Clonality:	Polyclonal
Conjugate:	This ELAVL1 antibody is un-conjugated
Application:	Western Blotting (WB), Immunohistochemistry (IHC), Immunofluorescence (IF)

Product Details

Immunogen:	Recombinant fusion protein containing a sequence corresponding to amino acids 1-326 of human HuR/ELAVL1 (NP_001410.2).
Sequence:	MSNGYEDHMA EDCRGDIGRT NLIVNYLPQN MTQDELRS LF SSIGEVESAK LIRDKVAGHS LGYG FVNYVT AKDAERAIN T L NGLRLQSKT IKVSYARPSS EVIKDANLYI SGLPRTMTQK DVEDMFSRFG RIINSRVLVD QTTGLSRGVA FIRFDKRSEA EEAITSFN GH KPPGSSEPIT VKFAANPNQN KNVALLSQLY HSPARRFGGP VHHQAQRF RF SPMGVDHMSG LSGVNVPGNA SSGWCIFIYN LGQDADEGIL WQMFPGF GAV TNVKVIRDFN TNKCKGFGFV TMTNYEEAAM AIASLNGYRL GDKILQVSFK TNKSHK
Isotype:	IgG
Cross-Reactivity:	Human, Mouse, Rat
Characteristics:	Polyclonal Antibodies

Product Details

Purification: Affinity purification

Target Details

Target: ELAVL1

Alternative Name: ELAVL1 ([ELAVL1 Products](#))

Background: The protein encoded by this gene is a member of the ELAVL family of RNA-binding proteins that contain several RNA recognition motifs, and selectively bind AU-rich elements (AREs) found in the 3' untranslated regions of mRNAs. AREs signal degradation of mRNAs as a means to regulate gene expression, thus by binding AREs, the ELAVL family of proteins play a role in stabilizing ARE-containing mRNAs. This gene has been implicated in a variety of biological processes and has been linked to a number of diseases, including cancer. It is highly expressed in many cancers, and could be potentially useful in cancer diagnosis, prognosis, and therapy. ELAV1, HUR, Hua, MeIG, HuR / ELAVL1, ELAVL1, Epigenetics & Nuclear Signaling, RNA Binding, Endocrine & Metabolism, AMPK Signaling Pathway, ELAVL1

Molecular Weight: 36 kDa/38 kDa

Gene ID: 1994

UniProt: [Q15717](#)

Pathways: [AMPK Signaling](#)

Application Details

Application Notes: WB, 1:500 - 1:2000, IHC, 1:100 - 1:200, IF, 1:50 - 1:200

Restrictions: For Research Use only

Handling

Format: Liquid

Buffer: PBS with 0.02 % sodium azide, 50 % glycerol, pH 7.3.

Preservative: Sodium azide

Precaution of Use: This product contains Sodium azide: a POISONOUS AND HAZARDOUS SUBSTANCE which should be handled by trained staff only.

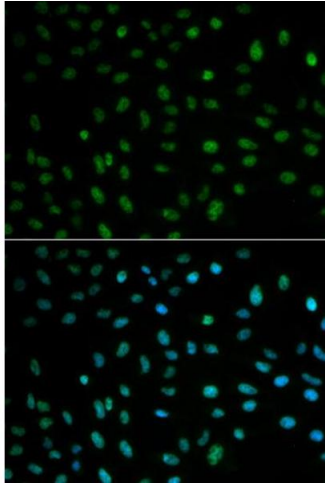
Handling Advice: Avoid freeze / thaw cycles

Handling

Storage: -20 °C

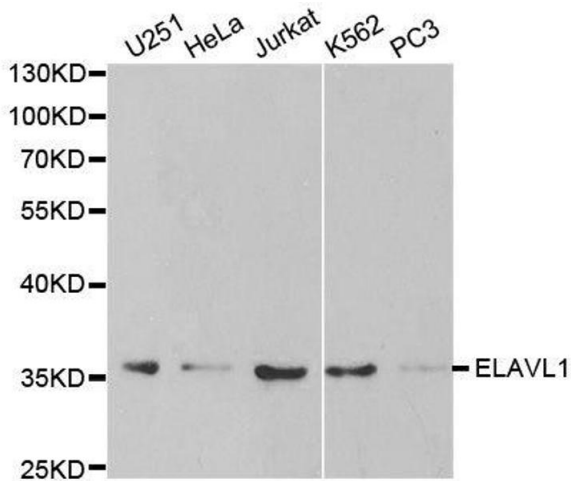
Storage Comment: Store at -20°C. Avoid freeze / thaw cycles.

Images



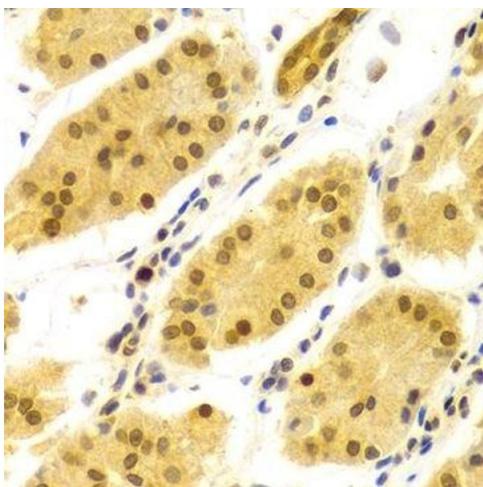
Immunofluorescence

Image 1. Immunofluorescence analysis of MCF7 cell using ELAVL1 antibody. Blue: DAPI for nuclear staining.



Western Blotting

Image 2. Western blot analysis of extracts of various cell lines, using ELAVL1 antibody.



Immunohistochemistry (Paraffin-embedded Sections)

Image 3. Immunohistochemistry of paraffin-embedded human stomach using ELAVL1 Antibody.

Please check the [product details page](#) for more images. Overall 31 images are available for ABIN3022231.