

Datasheet for ABIN3022237
anti-TAP2 antibody (AA 430-680)[Go to Product page](#)

7 Images

Overview

Quantity:	100 µL
Target:	TAP2
Binding Specificity:	AA 430-680
Reactivity:	Human
Host:	Rabbit
Clonality:	Polyclonal
Conjugate:	This TAP2 antibody is un-conjugated
Application:	Western Blotting (WB), Immunohistochemistry (IHC), Immunofluorescence (IF)

Product Details

Immunogen:	Recombinant fusion protein containing a sequence corresponding to amino acids 430-680 of human TAP2 (NP_000535.3).
Sequence:	YGDMLSNVGA AEKVFSYMDR QPNLPSPGTL APTTLQGVVK FQDVSFAYPN RPDRPVLKGL TFTLRPGEVT ALVGPNNGSGK STVAALLQNL YQPTGGQVLL DEKPISQYEH CYLHSQVVS GQEPVLFSGS VRNNIAYGLQ SCEDDKVMAA AQAAHADDFI QEMEHGIYTD VGEKGSQLAA GQKQRLAIAR ALVRDPRVLI LDEATSALDV QCEQALQDWN SRGDRTVLVI AHRLQAVQRA HQILVLQEGK L
Isotype:	IgG
Cross-Reactivity:	Human, Mouse, Rat
Characteristics:	Polyclonal Antibodies

Target Details

Target:	TAP2
Alternative Name:	TAP2 (TAP2 Products)
Background:	<p>The membrane-associated protein encoded by this gene is a member of the superfamily of ATP-binding cassette (ABC) transporters. ABC proteins transport various molecules across extra- and intra-cellular membranes. ABC genes are divided into seven distinct subfamilies (ABC1, MDR/TAP, MRP, ALD, OABP, GCN20, White). This protein is a member of the MDR/TAP subfamily. Members of the MDR/TAP subfamily are involved in multidrug resistance. This gene is located 7 kb telomeric to gene family member ABCB2. The protein encoded by this gene is involved in antigen presentation. This protein forms a heterodimer with ABCB2 in order to transport peptides from the cytoplasm to the endoplasmic reticulum. Mutations in this gene may be associated with ankylosing spondylitis, insulin-dependent diabetes mellitus, and celiac disease. Alternative splicing of this gene produces products which differ in peptide selectivity and level of restoration of surface expression of MHC class I molecules.,TAP2,ABCB18,ABCB3,APT2,D6S217E,PSF-2,PSF2,RING11,Signal Transduction,TAP2</p>
Molecular Weight:	72 kDa/75 kDa
Gene ID:	6891
UniProt:	Q03519
Pathways:	Regulation of Leukocyte Mediated Immunity , Positive Regulation of Immune Effector Process , Human Leukocyte Antigen (HLA) in Adaptive Immune Response

Application Details

Application Notes:	WB,1:500 - 1:2000,IHC,1:50 - 1:200,IF,1:50 - 1:200
Restrictions:	For Research Use only

Handling

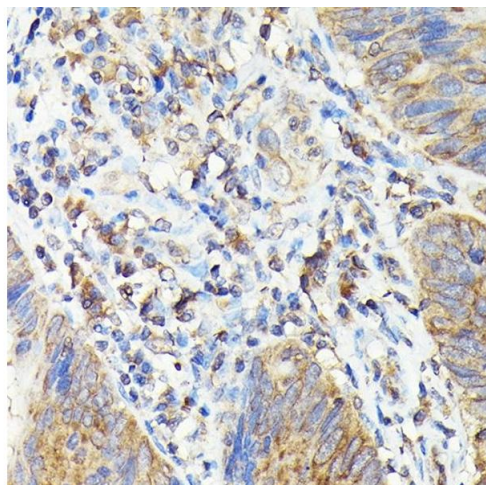
Format:	Liquid
Buffer:	PBS with 0.02 % sodium azide,50 % glycerol, pH 7.3.
Preservative:	Sodium azide
Precaution of Use:	This product contains Sodium azide: a POISONOUS AND HAZARDOUS SUBSTANCE which should be handled by trained staff only.
Handling Advice:	Avoid freeze / thaw cycles

Handling

Storage: -20 °C

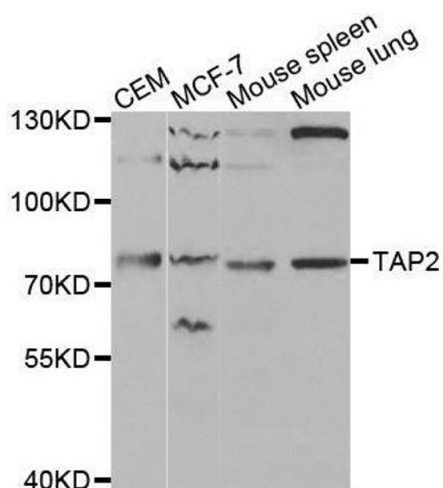
Storage Comment: Store at -20°C. Avoid freeze / thaw cycles.

Images



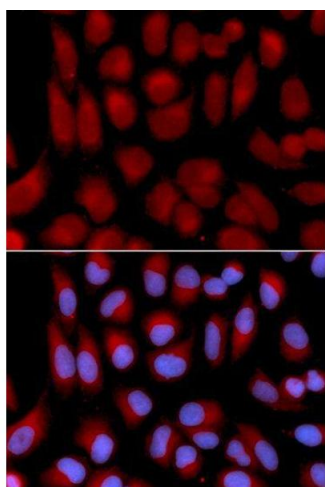
Immunohistochemistry

Image 1. Immunohistochemistry of paraffin-embedded human colon carcinoma using T Rabbit pAb (ABIN3022236, ABIN3022237, ABIN3022238, ABIN1513586 and ABIN6218687) at dilution of 1:100 (40x lens). Perform high pressure antigen retrieval with 10 mM citrate buffer pH 6.0 before commencing with IHC staining protocol.



Western Blotting

Image 2. Western blot analysis of extracts of various cell lines, using TAP2 antibody.



Immunofluorescence

Image 3. Immunofluorescence analysis of U2OS cell using TAP2 antibody. Blue: DAPI for nuclear staining.

Please check the [product details page](#) for more images. Overall 7 images are available for ABIN3022237.