



[Go to Product page](#)

Datasheet for ABIN3022259  
**anti-DPYD antibody (AA 1-173)**

2 Images

Overview

Quantity:	100 µL
Target:	DPYD
Binding Specificity:	AA 1-173
Reactivity:	Human
Host:	Rabbit
Clonality:	Polyclonal
Conjugate:	This DPYD antibody is un-conjugated
Application:	Western Blotting (WB)

Product Details

Immunogen:	Recombinant fusion protein containing a sequence corresponding to amino acids 1-173 of human DPYD (NP_001153773.1).
Sequence:	MAPVLSKDSA DIESILALNP RTQTHATLCS TSAKKLDKHH WKRNPDKNCF NCKLENNFD DIKHTTLGER GALREAMRCL KCADAPCQKS CPTNLDIKSF ITSIANKNYY GAAKMIFSDN PLGLTCGMVC PTSDLQVGGC NLYATEEGPI NIGGLQQFAT ETLILAFSLM NHL
Isotype:	IgG
Cross-Reactivity:	Human, Mouse
Characteristics:	Polyclonal Antibodies
Purification:	Affinity purification

## Target Details

---

Target:	DPYD
Alternative Name:	DPYD ( <a href="#">DPYD Products</a> )
Background:	The protein encoded by this gene is a pyrimidine catabolic enzyme and the initial and rate-limiting factor in the pathway of uracil and thymidine catabolism. Mutations in this gene result in dihydropyrimidine dehydrogenase deficiency, an error in pyrimidine metabolism associated with thymine-uraciluria and an increased risk of toxicity in cancer patients receiving 5-fluorouracil chemotherapy. Two transcript variants encoding different isoforms have been found for this gene.,DPYD,DHP,DHPDHASE,DPD,Signal Transduction,Endocrine & Metabolism,Amino acid metabolism,DPYD
Molecular Weight:	18 kDa/111 kDa
Gene ID:	1806
UniProt:	<a href="#">Q12882</a>
Pathways:	<a href="#">Ribonucleoside Biosynthetic Process</a>

## Application Details

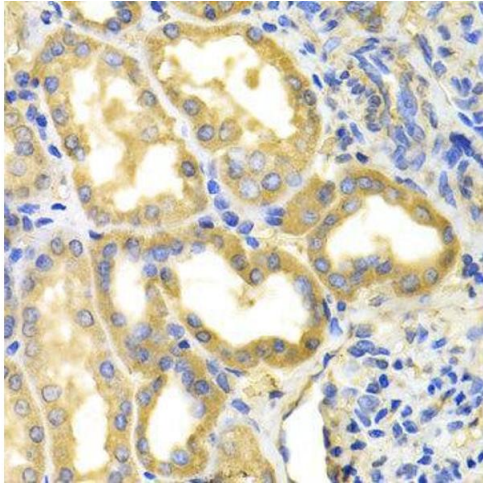
---

Application Notes:	WB,1:500 - 1:2000
Restrictions:	For Research Use only

## Handling

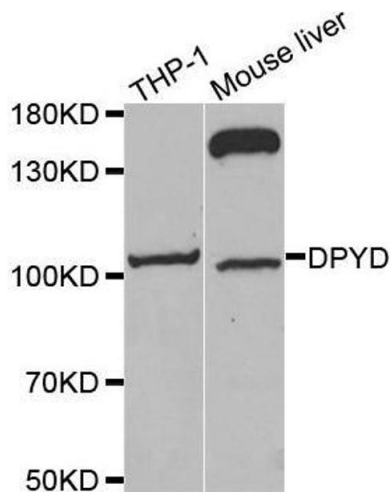
---

Format:	Liquid
Buffer:	PBS with 0.02 % sodium azide,50 % glycerol, pH 7.3.
Preservative:	Sodium azide
Precaution of Use:	This product contains Sodium azide: a POISONOUS AND HAZARDOUS SUBSTANCE which should be handled by trained staff only.
Handling Advice:	Avoid freeze / thaw cycles
Storage:	-20 °C
Storage Comment:	Store at -20°C. Avoid freeze / thaw cycles.



### Immunohistochemistry

**Image 1.**



### Western Blotting

**Image 2.** Western blot analysis of extracts of various cell lines, using DPYD antibody.