

Datasheet for ABIN3022264
anti-L-Selectin antibody (AA 1-100)[Go to Product page](#)

6 Images

Overview

Quantity:	100 µL
Target:	L-Selectin (SELL)
Binding Specificity:	AA 1-100
Reactivity:	Human
Host:	Rabbit
Clonality:	Polyclonal
Conjugate:	This L-Selectin antibody is un-conjugated
Application:	Immunohistochemistry (IHC), Western Blotting (WB)

Product Details

Immunogen:	A synthetic peptide corresponding to a sequence within amino acids 1-100 of human SELL (NP_000646.2).
Sequence:	MGCRRTREGP SKAMIFPWKC QSTQRDLWNI FKLWGWTMCL CDFLAHHGTD CWTYHYSEKP MNWQRARRFC RDNYTDLVAI QNKAEIEYLE KTLPFSSRSYY
Isotype:	IgG
Cross-Reactivity:	Human, Mouse, Rat
Characteristics:	Polyclonal Antibodies

Target Details

Target:	L-Selectin (SELL)
---------	-------------------

Target Details

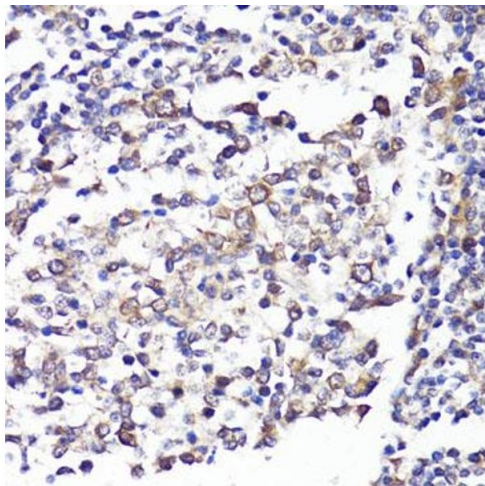
Alternative Name:	SELL (SELL Products)
Background:	<p>This gene encodes a cell surface adhesion molecule that belongs to a family of adhesion/homing receptors. The encoded protein contains a C-type lectin-like domain, a calcium-binding epidermal growth factor-like domain, and two short complement-like repeats. The gene product is required for binding and subsequent rolling of leucocytes on endothelial cells, facilitating their migration into secondary lymphoid organs and inflammation sites. Single-nucleotide polymorphisms in this gene have been associated with various diseases including immunoglobulin A nephropathy. Alternatively spliced transcript variants have been found for this gene.,SELL,CD62L,LAM1,LECAM1,LEU8,LNHR,LSEL,LYAM1,PLNHR,TQ1,Immunology & Inflammation,CD markers,Stem Cells,Hematopoietic Progenitors,Cardiovascular,Blood,SELL</p>
Molecular Weight:	42 kDa/43 kDa
Gene ID:	6402
UniProt:	P14151

Application Details

Application Notes:	WB,1:500 - 1:2000,IHC,1:50 - 1:200
Restrictions:	For Research Use only

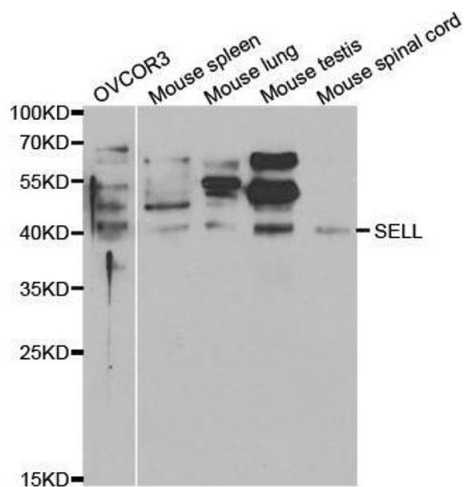
Handling

Format:	Liquid
Buffer:	PBS with 0.02 % sodium azide,50 % glycerol, pH 7.3.
Preservative:	Sodium azide
Precaution of Use:	This product contains Sodium azide: a POISONOUS AND HAZARDOUS SUBSTANCE which should be handled by trained staff only.
Handling Advice:	Avoid freeze / thaw cycles
Storage:	-20 °C
Storage Comment:	Store at -20°C. Avoid freeze / thaw cycles.



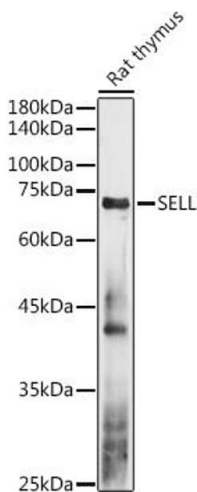
Immunohistochemistry

Image 1. Immunohistochemistry of paraffin-embedded human tonsil using SELL antibody (ABIN3022263, ABIN3022264, ABIN3022265 and ABIN6218704) at dilution of 1:100 (40x lens). Perform microwave antigen retrieval with 10 mM PBS buffer pH 7.2 before commencing with IHC staining protocol.



Western Blotting

Image 2. Western blot analysis of extracts of various cell lines, using SELL antibody.



Western Blotting

Image 3. Western blot analysis of extracts of Rat thymus, using SELL antibody (ABIN3022263, ABIN3022264, ABIN3022265 and ABIN6218704) at 1:1000 dilution. Secondary antibody: HRP Goat Anti-Rabbit IgG (H+L) (ABIN1684268 and ABIN3020597) at 1:10000 dilution. Lysates/proteins: 25 µg per lane. Blocking buffer: 3 % nonfat dry milk in TBST. Detection: ECL Basic Kit (RM00020). Exposure time: 90s.

Please check the [product details page](#) for more images. Overall 6 images are available for ABIN3022264.