

Datasheet for ABIN3022270  
**anti-TFPI antibody (AA 29-224)**[Go to Product page](#)

## 3 Images

## Overview

Quantity:	100 µL
Target:	TFPI
Binding Specificity:	AA 29-224
Reactivity:	Human
Host:	Rabbit
Clonality:	Polyclonal
Conjugate:	This TFPI antibody is un-conjugated
Application:	Western Blotting (WB)

## Product Details

Immunogen:	Recombinant fusion protein containing a sequence corresponding to amino acids 29-224 of human TFPI (NP_001027452.1).
Sequence:	DSEEDDEHTI ITDTELPPLK LMHSFCAFKK DDGPCKAIMK RFFFNIFTRQ CEEFIYGGCE GNQNRFSLE ECKKMCTRDN ANRIKTTTLQ QEKPDFCFLE EDPGICRGYI TRYFYNNQTK QCERFKYGGC LGNMNNFETL EECKNICEDG PNGFQVDNYG TQLNAVNNSL TPQSTKVPSL FVTKEGTNDG WKNAAH
Isotype:	IgG
Cross-Reactivity:	Human, Mouse, Rat
Characteristics:	Polyclonal Antibodies

## Target Details

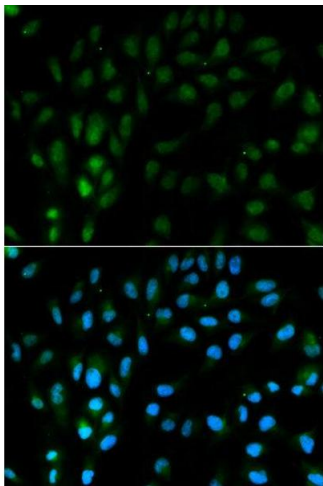
Target:	TFPI
Alternative Name:	TFPI ( <a href="#">TFPI Products</a> )
Background:	<p>This gene encodes a protease inhibitor that regulates the tissue factor (TF)-dependent pathway of blood coagulation. The coagulation process initiates with the formation of a factor VIIa-TF complex, which proteolytically activates additional proteases (factors IX and X) and ultimately leads to the formation of a fibrin clot. The product of this gene inhibits the activated factor X and VIIa-TF proteases in an autoregulatory loop. The encoded protein is glycosylated and predominantly found in the vascular endothelium and plasma in both free forms and complexed with plasma lipoproteins. Several alternatively spliced transcript variants of this gene have been described, but the full-length nature of some of these variants has not been confirmed.,TFPI,EPI,LACI,TFI,TFPI1,Cardiovascular,Blood,Coagulation,TFPI</p>
Molecular Weight:	28 kDa/35 kDa
Gene ID:	7035
UniProt:	<a href="#">P10646</a>

## Application Details

Application Notes:	WB,1:500 - 1:2000
Restrictions:	For Research Use only

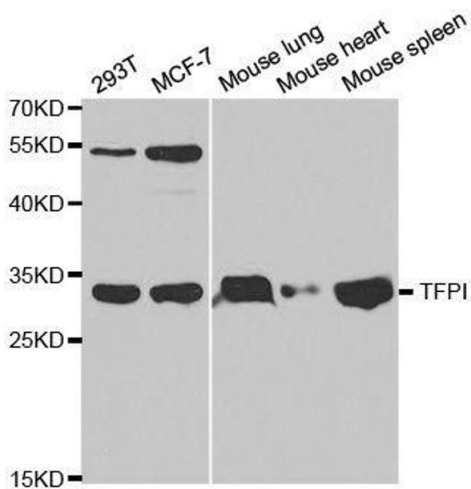
## Handling

Format:	Liquid
Buffer:	PBS with 0.02 % sodium azide,50 % glycerol, pH 7.3.
Preservative:	Sodium azide
Precaution of Use:	This product contains Sodium azide: a POISONOUS AND HAZARDOUS SUBSTANCE which should be handled by trained staff only.
Handling Advice:	Avoid freeze / thaw cycles
Storage:	-20 °C
Storage Comment:	Store at -20°C. Avoid freeze / thaw cycles.



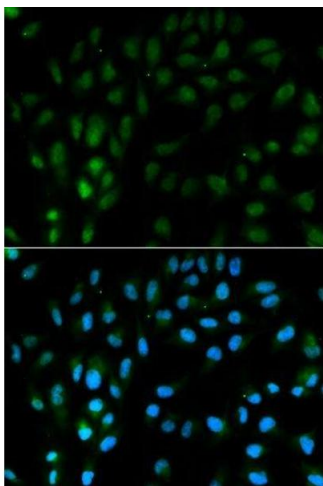
Immunofluorescence

**Image 1.** Immunofluorescence analysis of MCF7 cell using TFPI antibody. Blue: DAPI for nuclear staining.



Western Blotting

**Image 2.** Western blot analysis of extracts of various cell lines, using TFPI antibody.



Immunofluorescence

**Image 3.** Immunofluorescence analysis of MCF-7 cells using TFPI antibody.