



[Go to Product page](#)

Datasheet for ABIN3022273
anti-RFC1 antibody (AA 400-700)

3 Images

Overview

Quantity:	100 µL
Target:	RFC1
Binding Specificity:	AA 400-700
Reactivity:	Human
Host:	Rabbit
Clonality:	Polyclonal
Conjugate:	This RFC1 antibody is un-conjugated
Application:	Western Blotting (WB), Immunofluorescence (IF)

Product Details

Immunogen:	Recombinant fusion protein containing a sequence corresponding to amino acids 400-700 of human RFC1 (NP_001191676.1).
Sequence:	PKGAENCLEG LIFVITGVLE SIERDEAKSL IERYGGKVTG NVSKKTNYL V MGRDSGQSKS DKAAALGTKI IDEDGLLNLI RTMPGKSKY EIAVETEMKK ESKLERTPQK NVQGKRKISP SKKESESKKS RPTSKRDSLA KTIKKETDVF WKS LDFKEQV AEETSGDSKA RNLADDSS EN KVENLLWVDK YKPTSLKTII GQQGDQSCAN KLLRWLRNWQ KSSSEDKKHA AKFGKFSGKD DGSSFKAALL SGPPGVGKTT TASLVCQELG YSYVELNASD TRSKSSLKAI VAESLNNTSI K
Isotype:	IgG
Cross-Reactivity:	Human, Mouse, Rat
Characteristics:	Polyclonal Antibodies

Target Details

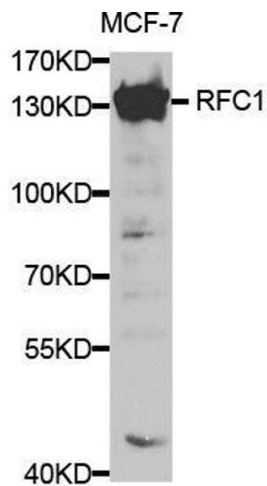
Target:	RFC1
Alternative Name:	RFC1 (RFC1 Products)
Background:	This gene encodes the large subunit of replication factor C, a five subunit DNA polymerase accessory protein, which is a DNA-dependent ATPase required for eukaryotic DNA replication and repair. The large subunit acts as an activator of DNA polymerases, binds to the 3' end of primers, and promotes coordinated synthesis of both strands. It may also have a role in telomere stability. Alternatively spliced transcript variants encoding different isoforms have been noted for this gene.,RFC1,A1,MHCBFB,PO-GA,RECC1,RFC,RFC140,Epigenetics & Nuclear Signaling,RFC1
Molecular Weight:	128 kDa
Gene ID:	5981
UniProt:	P35251
Pathways:	Telomere Maintenance , DNA Damage Repair , DNA Replication , Synthesis of DNA , Dicarboxylic Acid Transport

Application Details

Application Notes:	WB,1:500 - 1:2000,IF,1:50 - 1:200
Restrictions:	For Research Use only

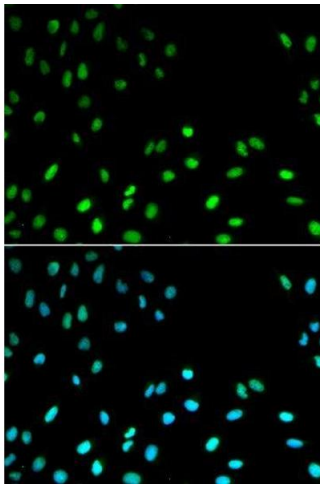
Handling

Format:	Liquid
Buffer:	PBS with 0.02 % sodium azide,50 % glycerol, pH 7.3.
Preservative:	Sodium azide
Precaution of Use:	This product contains Sodium azide: a POISONOUS AND HAZARDOUS SUBSTANCE which should be handled by trained staff only.
Handling Advice:	Avoid freeze / thaw cycles
Storage:	-20 °C
Storage Comment:	Store at -20°C. Avoid freeze / thaw cycles.



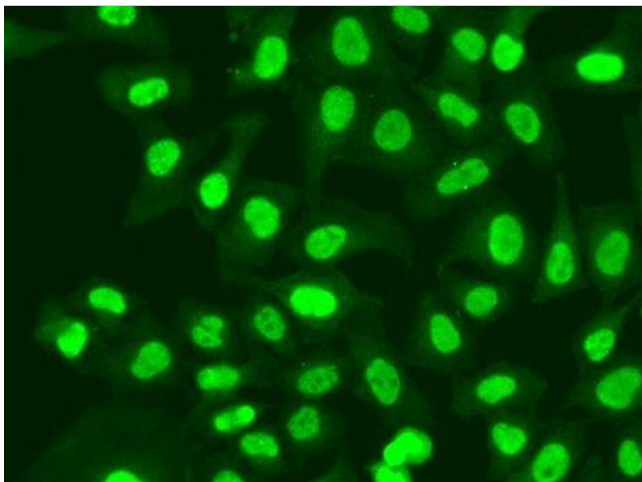
Western Blotting

Image 1. Western blot analysis of extracts of MCF-7 cells, using RFC1 antibody.



Immunofluorescence

Image 2. Immunofluorescence analysis of MCF-7 cells using RFC1 antibody.



Immunofluorescence

Image 3. Immunofluorescence analysis of A549 cells using RFC1 antibody.