



[Go to Product page](#)

Datasheet for ABIN3022282
anti-CDX2 antibody (AA 1-180)

3 Images

Overview

Quantity:	100 µL
Target:	CDX2
Binding Specificity:	AA 1-180
Reactivity:	Human
Host:	Rabbit
Clonality:	Polyclonal
Conjugate:	This CDX2 antibody is un-conjugated
Application:	Western Blotting (WB), Immunofluorescence (IF)

Product Details

Immunogen:	Recombinant fusion protein containing a sequence corresponding to amino acids 1-180 of human CDX2 (NP_001256.3).
Sequence:	MYVSYLLDKD VSMYPSSVRH SGGLNLAPQN FVSPQPYPDY GGYHVAAAAA AAANLDSAQS PGPSWPAAYG APLREDWNGY APGGAAAAAN AVAHGLNGGS PAAAMGYSSP ADYHPHHHPH HHPHHPAAAP SCASGLLQTL NPGPPGPAAT AAAEQLSPGG QRRNLCEWMR KPAQQLGSQ
Isotype:	IgG
Cross-Reactivity:	Human, Mouse, Rat
Characteristics:	Polyclonal Antibodies
Purification:	Affinity purification

Target Details

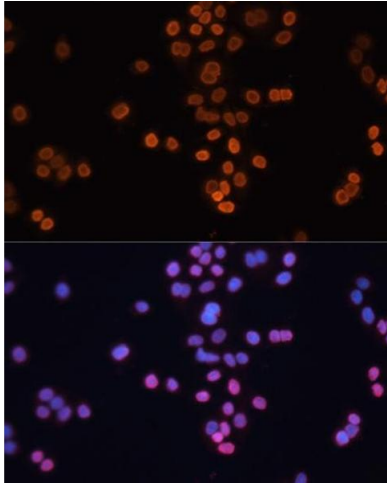
Target:	CDX2
Alternative Name:	CDX2 (CDX2 Products)
Background:	This gene is a member of the caudal-related homeobox transcription factor gene family. The encoded protein is a major regulator of intestine-specific genes involved in cell growth and differentiation. This protein also plays a role in early embryonic development of the intestinal tract. Aberrant expression of this gene is associated with intestinal inflammation and tumorigenesis., CDX2 , CDX-3 , CDX2/AS , CDX3 , Epigenetics & Nuclear Signaling , Transcription Factors , Cell Biology & Developmental Biology , Stem Cells , CDX2
Molecular Weight:	33 kDa
Gene ID:	1045
UniProt:	Q99626
Pathways:	Peptide Hormone Metabolism , Stem Cell Maintenance

Application Details

Application Notes:	WB,1:500 - 1:2000,IF,1:50 - 1:200
Restrictions:	For Research Use only

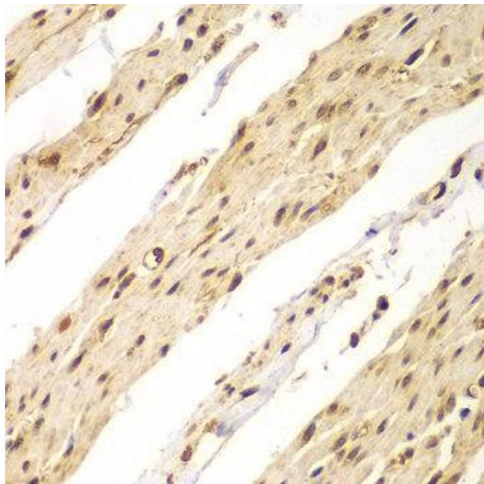
Handling

Buffer:	PBS with 0.02 % sodium azide,50 % glycerol, pH 7.3.
Preservative:	Sodium azide
Precaution of Use:	This product contains Sodium azide: a POISONOUS AND HAZARDOUS SUBSTANCE which should be handled by trained staff only.
Storage:	-20 °C
Storage Comment:	Store at -20°C. Avoid freeze / thaw cycles.



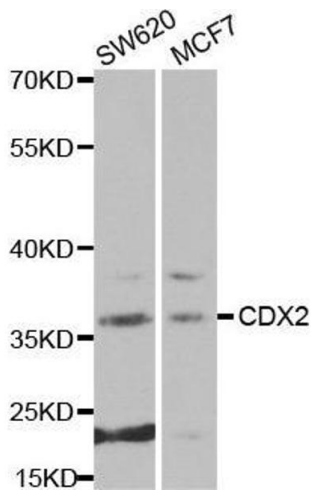
Immunofluorescence

Image 1. Immunofluorescence analysis of HT-29 cells using CDX2 antibody (ABIN3022281, ABIN3022282, ABIN3022283 and ABIN6218711) at dilution of 1:100. Blue: DAPI for nuclear staining.



Immunohistochemistry

Image 2.



Western Blotting

Image 3. Western blot analysis of extracts of various cell lines, using CDX2 antibody.