

Datasheet for ABIN3022285
anti-IDE antibody (AA 1-250)



[Go to Product page](#)

5 Images

Overview

| | |
|----------------------|--|
| Quantity: | 100 µL |
| Target: | IDE |
| Binding Specificity: | AA 1-250 |
| Reactivity: | Human |
| Host: | Rabbit |
| Clonality: | Polyclonal |
| Conjugate: | This IDE antibody is un-conjugated |
| Application: | Western Blotting (WB), Immunofluorescence (IF) |

Product Details

| | |
|-------------------|---|
| Immunogen: | Recombinant fusion protein containing a sequence corresponding to amino acids 1-250 of human Insulin-degrading enzyme (Insulin-degrading enzyme (IDE)) (NP_004960.2). |
| Sequence: | MRYRLAWLLH PALPSTFRSV LGARLPPPER LCGFQKKTYS KMNNPAIKRI GNHITKSPED KREYRGLELA NGIKVLLISD PTTDKSSAAL DVHIGSLSDP PNIAGLSHFC EHMLFLGTTK YPKENEYSQF LSEHAGSSNA FTSGEHTNYY FVDSHEHLEG ALDRFAQFFL CPLFDESCKD REVNAVDSSEH EKNVMNDAWR LFQLEKATGN PKHPFSKFGT GNKYTLETRP NQEGIDVRQE LLKFHSAYYS |
| Isotype: | IgG |
| Cross-Reactivity: | Human, Mouse |
| Characteristics: | Polyclonal Antibodies |
| Purification: | Affinity purification |

Target Details

| | |
|-------------------|--|
| Target: | IDE |
| Alternative Name: | IDE (IDE Products) |
| Background: | <p>This gene encodes a zinc metallopeptidase that degrades intracellular insulin, and thereby terminates insulin's activity, as well as participating in intercellular peptide signalling by degrading diverse peptides such as glucagon, amylin, bradykinin, and kallidin. The preferential affinity of this enzyme for insulin results in insulin-mediated inhibition of the degradation of other peptides such as beta-amyloid. Deficiencies in this protein's function are associated with Alzheimer's disease and type 2 diabetes mellitus but mutations in this gene have not been shown to be causative for these diseases. This protein localizes primarily to the cytoplasm but in some cell types localizes to the extracellular space, cell membrane, peroxisome, and mitochondrion. Alternative splicing results in multiple transcript variants encoding distinct isoforms. Additional transcript variants have been described but have not been experimentally verified.</p> <p>.,IDE,INSULYSIN,Cancer,Signal Transduction,Cell Biology & Developmental Biology,Growth factor,Ubiquitin,Endocrine & Metabolism,Endocrine and metabolic diseases,Diabetes,Neuroscience,Neurodegenerative Diseases,Amyloid Plaque and Neurofibrillary Tangle Formation in Alzheimer's Disease,Cardiovascular,Heart,Cardiovascular diseases,Heart disease,IDE</p> |
| Molecular Weight: | 54 kDa/117 kDa |
| Gene ID: | 3416 |
| UniProt: | P14735 |
| Pathways: | SARS-CoV-2 Protein Interactome |

Application Details

| | |
|--------------------|-----------------------------------|
| Application Notes: | WB,1:500 - 1:2000,IF,1:10 - 1:100 |
| Restrictions: | For Research Use only |

Handling

| | |
|--------------------|---|
| Format: | Liquid |
| Buffer: | PBS with 0.02 % sodium azide,50 % glycerol, pH 7.3. |
| Preservative: | Sodium azide |
| Precaution of Use: | This product contains Sodium azide: a POISONOUS AND HAZARDOUS SUBSTANCE which |

Handling

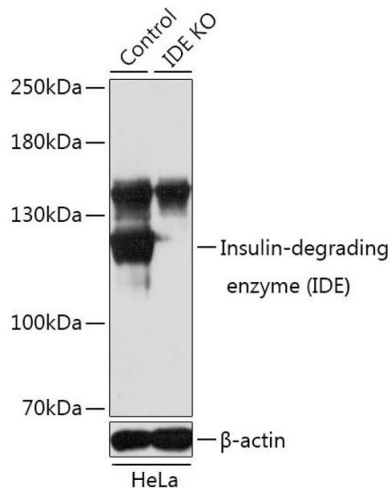
should be handled by trained staff only.

Handling Advice: Avoid freeze / thaw cycles

Storage: -20 °C

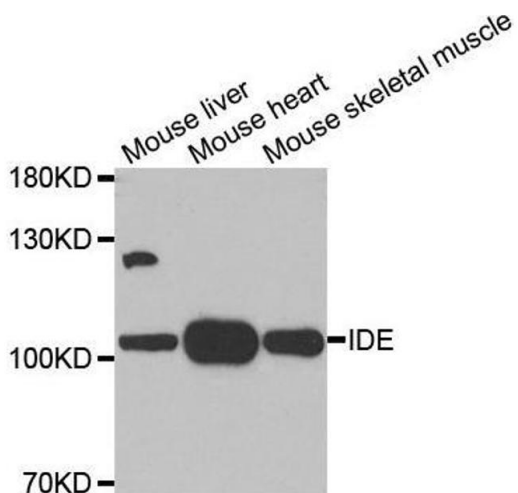
Storage Comment: Store at -20°C. Avoid freeze / thaw cycles.

Images



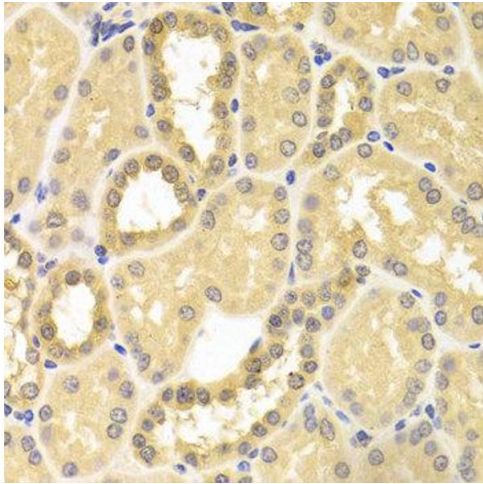
Western Blotting

Image 1. Western blot analysis of extracts from normal (control) and Insulin-degrading enzyme (Insulin-degrading enzyme (IDE)) knockout (KO) HeLa cells, using Insulin-degrading enzyme (Insulin-degrading enzyme (IDE)) antibody (ABIN3022284, ABIN3022285, ABIN3022286 and ABIN1513057) at 1:1000 dilution. Secondary antibody: HRP Goat Anti-Rabbit IgG (H+L) (ABIN1684268 and ABIN3020597) at 1:10000 dilution. Lysates/proteins: 25 µg per lane. Blocking buffer: 3% nonfat dry milk in TBST. Detection: ECL Basic Kit (RM00020). Exposure time: 10s.



Western Blotting

Image 2. Western blot analysis of extracts of various tissues, using IDE antibody.



Immunohistochemistry

Image 3.

Please check the [product details page](#) for more images. Overall 5 images are available for ABIN3022285.