

Datasheet for ABIN3022288  
**anti-s100a4 antibody (AA 1-101)**



[Go to Product page](#)

2 Images

## Overview

Quantity:	100 µL
Target:	s100a4 (S100A4)
Binding Specificity:	AA 1-101
Reactivity:	Human
Host:	Rabbit
Clonality:	Polyclonal
Conjugate:	This s100a4 antibody is un-conjugated
Application:	Western Blotting (WB), Immunohistochemistry (IHC), Immunofluorescence (IF)

## Product Details

Immunogen:	Recombinant fusion protein containing a sequence corresponding to amino acids 1-101 of human FSP1/S100A4 (NP_002952.1).
Sequence:	MACPLEKALD VMVSTFHKYS GKEGDKFKLN KSELKELLTR ELPSFLGKRT DEAAFQKLMS NLDSNRDNEV DFQEYCVFLS CIAMMCNEFF EGFPDKQPRK K
Isotype:	IgG
Cross-Reactivity:	Human, Mouse, Rat
Characteristics:	Polyclonal Antibodies

## Target Details

Target:	s100a4 (S100A4)
---------	-----------------

## Target Details

---

Alternative Name: [S100A4 \(S100A4 Products\)](#)

---

Background: The protein encoded by this gene is a member of the S100 family of proteins containing 2 EF-hand calcium-binding motifs. S100 proteins are localized in the cytoplasm and/or nucleus of a wide range of cells, and involved in the regulation of a number of cellular processes such as cell cycle progression and differentiation. S100 genes include at least 13 members which are located as a cluster on chromosome 1q21. This protein may function in motility, invasion, and tubulin polymerization. Chromosomal rearrangements and altered expression of this gene have been implicated in tumor metastasis. Multiple alternatively spliced variants, encoding the same protein, have been identified.,18A2,42A,CAPL,FSP1,MTS1,P9KA,PEL98,S100A4,Epigenetics & Nuclear Signaling,RNA Binding,Cancer,Invasion and Metastasis,Signal Transduction,Cell Biology & Developmental Biology,Extracellular Matrix,Neuroscience,Calcium Signaling,Cardiovascular,Angiogenesis,Heart,Cardiogenesis,S100A4

---

Molecular Weight: 11 kDa

---

Gene ID: 6275

---

UniProt: [P26447](#)

---

Pathways: [S100 Proteins](#)

---

## Application Details

---

Application Notes: WB,1:500 - 1:2000,IHC,1:50 - 1:200,IF,1:50 - 1:200

---

Restrictions: For Research Use only

---

## Handling

---

Format: Liquid

---

Buffer: PBS with 0.02 % sodium azide,50 % glycerol, pH 7.3.

---

Preservative: Sodium azide

---

Precaution of Use: This product contains Sodium azide: a POISONOUS AND HAZARDOUS SUBSTANCE which should be handled by trained staff only.

---

Handling Advice: Avoid freeze / thaw cycles

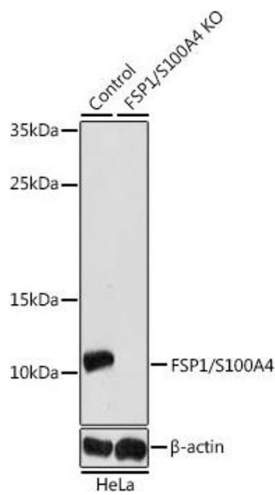
---

Storage: -20 °C

---

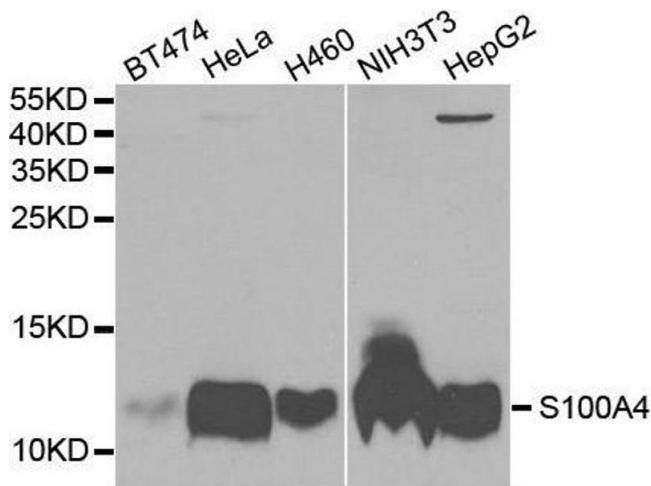
Storage Comment: Store at -20°C. Avoid freeze / thaw cycles.

---



### Western Blotting

**Image 1.** Western blot analysis of extracts from normal (control) and FSP1/S100 knockout (KO) HeLa cells, using FSP1/S100 antibody (ABIN3022287, ABIN3022288, ABIN3022289, ABIN1513494 and ABIN1514638) at 1:1000 dilution. Secondary antibody: HRP Goat Anti-Rabbit IgG (H+L) (ABIN1684268 and ABIN3020597) at 1:10000 dilution. Lysates/proteins: 25 µg per lane. Blocking buffer: 3 % nonfat dry milk in TBST. Detection: ECL Enhanced Kit (RM00021). Exposure time: 180s.



### Western Blotting

**Image 2.** Western blot analysis of extracts of various cell lines, using S100A4 antibody.